



Lockyer Valley Local Heritage Study

Murphys Creek Citations

Draft for Consultation

July 2025

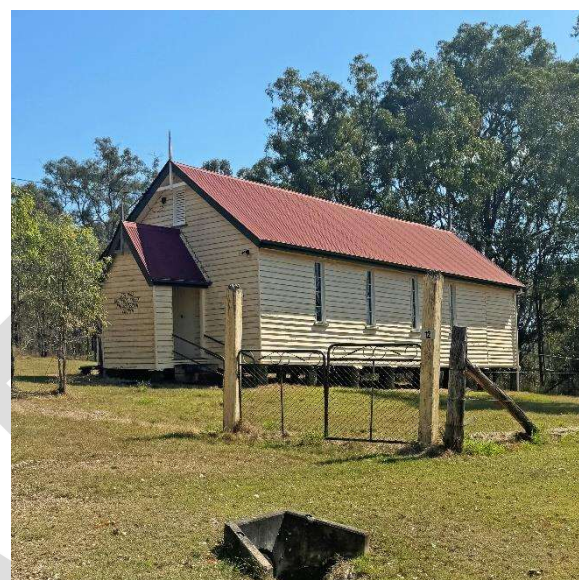
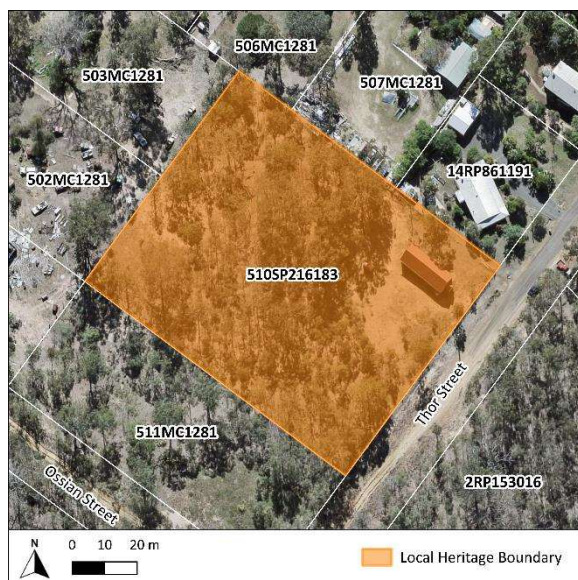
CONTENTS

| | | | | |
|---------|--|--|---------------|------------------------------------|
| LHP0601 | Murphys Creek Presbyterian Church | 10-12 Thor Street | Murphys Creek | Lot 510 SP216183 |
| LHP0602 | Murphys Creek Cemetery | Corner of Cemetery Road and Mc Cannes Road | Murphys Creek | Lot 274 CC3194 |
| LHP0603 | Murphys Creek Store and Petrol Station | 3 Penfolds Road | Murphys Creek | Lot 1 RP159861; Road Reserve |
| LHP0604 | Jessie's Cottage | 18 Jessie Lane | Murphys Creek | Lot 56 CH3135 |
| LHP0605 | Lockyer Rail Station (former) | 18 Jessie Lane | Murphys Creek | Lot 56 CH3135 |

LOCKYER VALLEY LOCAL HERITAGE STUDY



| | | | |
|------------------------|-------------------------------------|---|-------------|
| PLACE NAME | Murphys Creek Presbyterian Church | | |
| OTHER NAMES | | | |
| PLACE ID NUMBER | LHP0601 | | |
| ADDRESS | 10-12 Thor Street, Murphys Creek | Lot on Plan or GPS Coordinates | 510SP216183 |



HISTORICAL CONTEXT

Historical period: Victorian 1860 – 1890

History:

Presbyterianism was present within the wider Lockyer district from the 1860s¹, however, early congregants had to travel to the church in Toowoomba for services². House visitations within the district were occurring in the early 1870s, leading to the construction of a church in Laidley in 1872³. Shortly after, between c. 1872-1873, the Murphys Creek Presbyterian Church was constructed⁴. Noting the Laidley church was reconstructed in 1902 after cyclone damage⁵, the Murphys Creek Presbyterian Church is potentially the earliest remaining Presbyterian church in the Lockyer District.

Over the years, the church was noted for its community events both within and outside the church, including Queen's Birthday picnics⁶, annual socials⁷, and participation in the broader region's church camp programs⁸. The church continued to be used into the 2000s, however, it is unknown when it closed.

The current use of the church is unknown.

Historical themes:

- 6. Building settlements, towns, cities, and dwellings.
 - 6.2. Planning and forming settlements.
- 8. Creating social and cultural institutions.
 - 8.1. Worshipping and religious institutions.
 - 8.2. Cultural activities.
 - 8.6. Commemorating significant events.

PHYSICAL DESCRIPTION

The Murphys Creek Presbyterian Church is a typical example of a modest rural timber church. The church is set on low timber stumps and is clad in weatherboard. Its steeply pitched gable roof is clad in red corrugated iron.

The front façade (southeastern elevation) features a central porch. This and the front gable end are both adorned with a finial and gable decoration, with the front gable also including a rectangular vent. The front of the central porch features text that reads “Est 1862. Murphys Creek Presbyterian Church”, referencing the emergence of the denomination rather than the church itself. The church is accessed via short masonry steps on the northeastern side of the central porch leading to French timber doors.

The northeastern and southwestern elevations feature narrow rectangular windows. The southeastern elevation also features an additional door accessed via a ramp. A small water tank is present on this elevation. A short extension has been added to the rear of the church.

The southeastern boundary contains two tall timber posts with a metal chain link gate. An early timber fence with chain link wire on the lower half is present southwest of this which would have previously connected to the gate. The remainder of the church grounds are enclosed via a wire fence connected via timber posts.

STATEMENT OF SIGNIFICANCE

| Criterion: | Description: |
|-------------------------|---|
| 1. Historical | The Murphys Creek Presbyterian Church demonstrates the historical pattern of Presbyterianism in Murphys Creek, dating to 1872-1873. It reflects the historical development of religious and social activities in the Murphys Creek area during this period. Additionally, it is potentially the earliest remaining Presbyterian church in the wider Lockyer district. |
| 2. Scientific | Does not currently threshold. |
| 3. Typological | The Murphys Creek Presbyterian Church is a good example of a typical mid-late 19 th century rural timber church, with features such as a steeply pitched gable roof, weatherboard, and central porch, demonstrating modest design principles of small rural churches of this period. |
| 4. Aesthetic | Does not currently threshold. |
| 5. Social and Spiritual | The Murphys Creek Presbyterian Church holds social and spiritual significance for the local community as a site of early Presbyterianism and as a venue for community events. Its ongoing function reinforces its role in fostering spiritual connections and maintaining the cultural identity of the Presbyterian congregation in Murphys Creek. |

Statement summary:

The Murphys Creek Presbyterian Church is historically significant for its role in the development of Presbyterianism in Murphys Creek, potentially being the earliest remaining Presbyterian church in

the wider Lockyer district. Built in c. 1872-1873, it exemplifies the typical design of modest rural churches of the period. The church holds social and spiritual importance as a site of early Presbyterianism and as a venue for community events, with its ongoing function reinforcing its role in fostering spiritual connections and maintaining the cultural identity of the Presbyterian congregation in Murphys Creek.

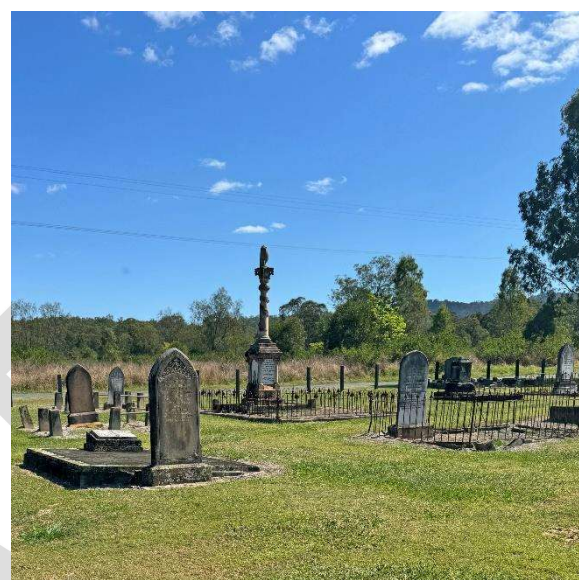
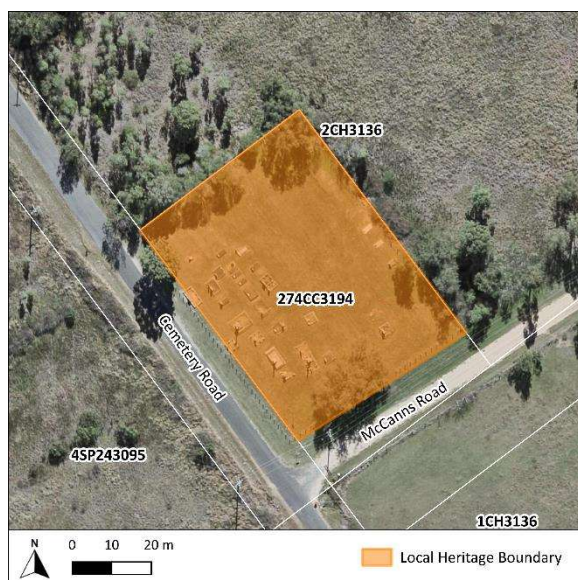
REFERENCES

1. Presbyterian Church Synod. (1869, May 8). *The Queenslander*, p. 5. Retrieved from <http://nla.gov.au/nla.news-article20324076>.
2. The Opening of the Laidley Presbyterian Church. (1872, November 19). *The Queensland Times*, p. 3. Retrieved from <http://nla.gov.au/nla.news-article123619718>.
3. The Opening of the Laidley Presbyterian Church. (1872, November 19). *The Queensland Times*, p. 3. Retrieved from <http://nla.gov.au/nla.news-article123619718>.
4. Monthly Summary of News. (1873, January 18). *Rockhampton Bulletin*, p. 3. Retrieved from <http://nla.gov.au/nla.news-article51791825>.
5. Laidley Presbyterian Church. (1902, June 10). *The Queensland Times*, p. 7. Retrieved from <http://nla.gov.au/nla.news-article122548330>.
6. Murphys Creek. (1880, May 27). *The Darling Downs Gazette and General Advertiser*, p. 3. Retrieved from <http://nla.gov.au/nla.news-article85755335>.
7. Murphys Creek Presbyterian Church. (1901, November 14). *The Brisbane Courier*, p. 6. Retrieved from <http://nla.gov.au/nla.news-article19132528>.
8. Fellowship Camp at Murphys Creek. (1949, April 19). *The Queensland Times*, p. 2. Retrieved from <http://nla.gov.au/nla.news-article117086863>.

LOCKYER VALLEY LOCAL HERITAGE STUDY



| | | | |
|------------------------|---|---------------------------------------|-----------|
| PLACE NAME | Murphys Creek Cemetery | | |
| OTHER NAMES | | | |
| PLACE ID NUMBER | LHP0602 | | |
| ADDRESS | Corner of Cemetery Road and McCanns Road, Murphys Creek | Lot on Plan or GPS Coordinates | 274CC3194 |



HISTORICAL CONTEXT

Historical period: Victorian 1860 – 1890

History:

The land for the Murphys Creek Cemetery was reserved in 1869¹. The earliest recorded memorial belongs to Charles Wellstead, one of the oldest residents of Murphys Creek², who died in 1876. The cemetery includes graves of early English and Scottish settlers to the region and remains in use today.

Historical themes:

- 6. Building settlements, towns, cities, and dwellings.
 - 6.2. Planning and forming settlements.
- 8. Creating social and cultural institutions.
 - 8.1. Worshipping and religious institutions.
 - 8.2. Cultural activities.
 - 8.6. Commemorating significant events.

PHYSICAL DESCRIPTION

The Murphy Creek Cemetery is situated on a grassed lot, bordered by metal posts along Cemetery Road and McCanns Road, with the remaining sides enclosed by a wire fence with timber posts. A mature tree stands on the southeastern border.

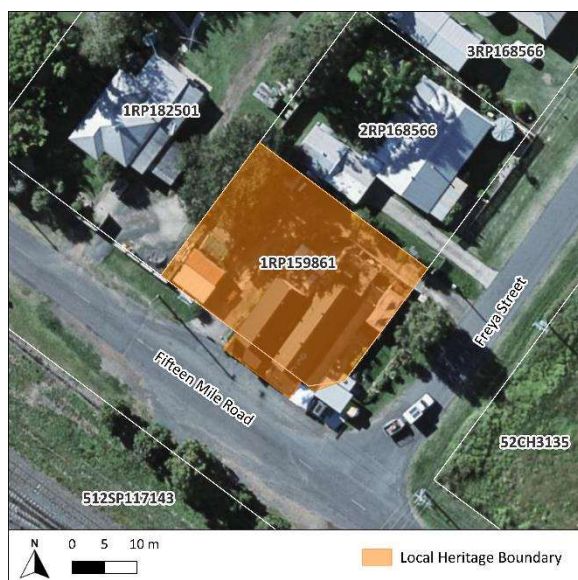
The cemetery lacks a uniform layout and contains both contemporary and historical graves. Headstones and monuments vary, including tablet-style, pillar, and cross monuments, several of which feature iron fencing.

| STATEMENT OF SIGNIFICANCE | |
|---|--|
| Criterion: | Description: |
| 1. Historical | The Murphys Creek Cemetery holds historical significance as it dates to c. 1860s-70s and has been in use for over a century, reflecting local burial practices and the growth and development of the Murphys Creek area. |
| 2. Scientific | Does not currently threshold. |
| 3. Typological | As a rural cemetery, the Murphys Creek Cemetery is representative of mid-19 th and early 20 th century burial sites in rural Queensland. It reflects typical memorial designs and functions of its time. |
| 4. Aesthetic | Does not currently threshold. |
| 5. Social and Spiritual | The Murphys Creek Cemetery holds strong social and spiritual significance to the local community as a place of remembrance and respect for the deceased. |
| Statement summary: | |
| <p>The Murphys Creek Cemetery is significant for its association with the historical development of the Murphys Creek area, dating from c. 1860s-70s. It reflects the burial practices of the local community from this time and includes graves from early English and Scottish settlers. The cemetery also holds social and spiritual significance as a place of ongoing cultural connection for the community, serving as a resting place for generations of residents and continuing in use as a cemetery to the present day.</p> | |
| REFERENCES | |
| <ol style="list-style-type: none"> 1. Official Notifications. (1869, July 3). <i>Maryborough Chronicle, Wide Bay, and Burnett Advertiser</i>, p. 2. Retrieved from http://nla.gov.au/nla.news-article148020276. 2. The National Association. (1876, September 16). <i>The Brisbane Courier</i>, p. 5. Retrieved from http://nla.gov.au/nla.news-article1390279. | |

LOCKYER VALLEY LOCAL HERITAGE STUDY



| | | | |
|------------------------|--|---------------------------------------|-------------------------|
| PLACE NAME | Murphys Creek Store and Petrol Station | | |
| OTHER NAMES | Chapman's Store; Coffee in the Bush | | |
| PLACE ID NUMBER | LHP0603 | | |
| ADDRESS | 3 Penfolds Rd, Murphys Creek | Lot on Plan or GPS Coordinates | 1RP159861; Road Reserve |



HISTORICAL CONTEXT

Historical Period: c. Interwar 1919 – 1939 – Postwar 1945 – 1960

History:

Henry Chapman purchased the land in 1869¹ but did not open a store on until 1874². The store reportedly included a produce shop, general store, attached butchers, and a bush house. In October 1924, the store, then owned by Henry's son Sydney, was gutted by a fire³.

In February 1925, Mr. G. Williams' new general store was constructed due to the loss of Chapman's⁴. It is unclear if this was on Chapman's property for his use, or if he erected a new store separate to this. By 1930, 'Chapman's Garage' was in operation which may have been located on this property⁵. Chapman reportedly continued operating his store until the 1940s⁶.

The earliest available aerial imagery from 1944 shows buildings on the site, though it is not discernible if these are the current buildings, which are visible by the 1950s⁷. Photographs show the buildings operating as the Murphys Creek Store (northwest), which also offered fuel, and Coffee in the Bush (southeast) from at least the c. 1980s through the 2020s⁸. It is understood to have since closed and its current use is unknown.

Historical themes:

- 3. Developing secondary and tertiary industries.
 - 3.1. Feeding Queenslanders.
 - 3.8 Marketing, retailing and service industries.

PHYSICAL DESCRIPTION

The Murphys Creek Store and Petrol Station consists of two buildings – the Murphys Creek Store (northwest) and the Coffee in the Bush (southeast).

Murphys Creek Store is a low set timber structure clad in weatherboard with a corrugated iron open gable roof. The front façade (southwestern elevation) features a corrugated iron skillion awning extending across the footpath with weatherboard enclosing the northwestern side. The awning is supported by timber posts with decorative brackets and features a vertical timber frieze that was once adorned with the words “Murphys Creek Store”. Casement windows and a timber door, all with skillion window hoods featuring timber battening, are present on the northwestern elevation. A skillion roof extension clad in wide timber boards (Hardieplank-style) is present to the rear.

The Coffee in the Bush is a low set structure clad in corrugated iron with a corrugated iron open gable roof with the word “SHOP” painted on the southeastern side. The front façade (southwestern elevation) features a corrugated iron skillion awning extending across the footpath that has been enclosed with corrugated iron and contemporary sliding doors. A skillion roof extension clad in wide timber boards (Hardieplank-style) is present along the entire length of the southeastern elevation. This extension features casement windows, fixed single pane windows, and contemporary fly screen doors. There is a contemporary carport on the southeastern corner and a contemporary deck on the northeastern corner.

STATEMENT OF SIGNIFICANCE

| Criterion: | Description: |
|-------------------------|---|
| 1. Historical | Murphys Creek Store and Petrol Station, constructed in the early to mid-20 th century replacing the earlier 1874 store, demonstrates the historical development of Murphys Creek as a commercial premises. |
| 2. Scientific | Does not currently threshold. |
| 3. Typological | Murphys Creek Store and Petrol Station retain principal characteristics of early to mid-20 th century commercial buildings. |
| 4. Aesthetic | Does not currently threshold. |
| 5. Social and Spiritual | Does not currently threshold. |

Statement summary:

Murphys Creek Store and Petrol Station, constructed in the early to mid-20th century replacing the earlier 1874 store, demonstrates the historical development of Murphys Creek as a commercial premises. They retain principal characteristics of early to mid-20th century commercial buildings.

REFERENCES

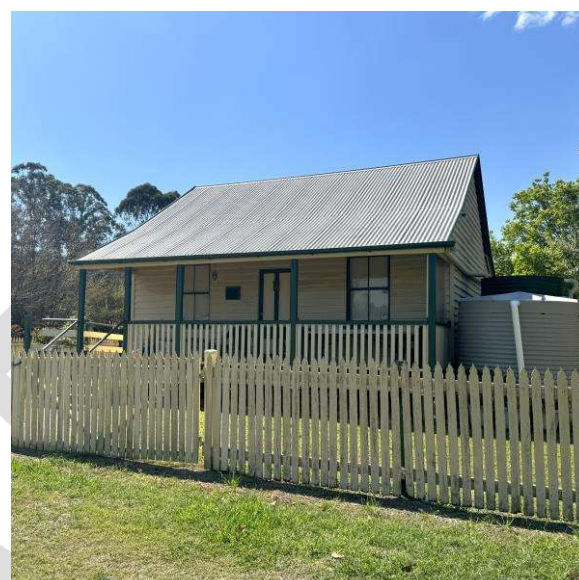
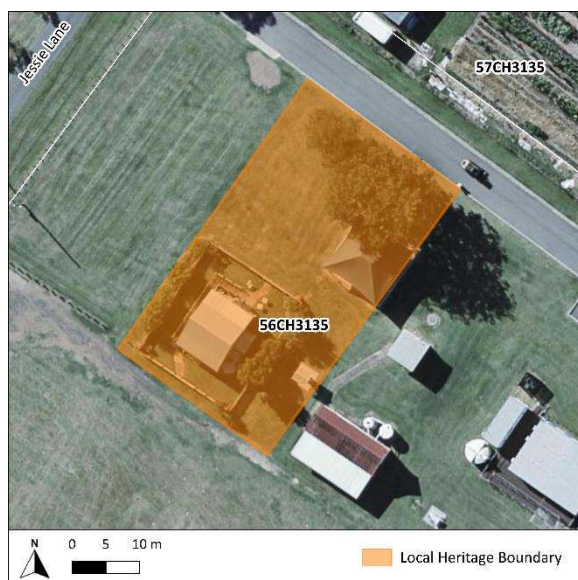
1. Queensland Titles Registry. (1869-1979). Deed of Grant: No. 20617. Register Book Vol. 152, Folio 128.
2. Murphys Creek. (1874, May 9). *The Darling Downs Gazette and General Advertiser*, p. 3. Retrieved from <http://nla.gov.au/nla.news-article75470457>.
3. Murphys Creek Blaze. (1924, October 20). *The Brisbane Courier*, p. 7. Retrieved from <http://nla.gov.au/nla.news-article22878667>.

4. Murphys Creek. (1924, December 19). *The Brisbane Courier*, p. 9. Retrieved from <http://nla.gov.au/nla.news-article22870655>; On the Range. (1925, February 2). *The Daily Mail*, p. 4. Retrieved from <http://nla.gov.au/nla.news-article218330564>.
5. Murphys Creek. (1930, September 27). *The Toowoomba Chronicle and Darling Downs Gazette*, p. 13. Retrieved from <http://nla.gov.au/nla.news-article254147711>.
6. Talbot, D., & the Gatton & District Historical Society (2014). *A History of Gatton & District 1824 - 2008*. Lockyer Valley Regional Council; Commonwealth of Australia. (1925-1949). *Electoral Roll, State of Queensland, Division of Darling Downs, Roll of Electors for the Subdivision of Helidon*. Retrieved from <https://www.ancestry.com.au/search/collections/1207/>.
7. QImagery. 1933 – 1997 Aerial Imagery. Retrieved from <https://qimagery.information.qld.gov.au/>.
8. Talbot, D., & the Gatton & District Historical Society (2014). *A History of Gatton & District 1824 - 2008*. Lockyer Valley Regional Council; Murphys Creek Shop. (2020-2022). *Murphys Creek Shop* [Facebook Page]. Retrieved from <https://www.facebook.com/theladyinthecreek/>.

LOCKYER VALLEY LOCAL HERITAGE STUDY



| | | | |
|-----------------|-------------------------------|--------------------------------|----------|
| PLACE NAME | Jessie's Cottage | | |
| OTHER NAMES | N/A | | |
| PLACE ID NUMBER | LHP0604 | | |
| ADDRESS | 18 Jessie Lane, Murphys Creek | Lot on Plan or GPS Coordinates | 56CH3135 |



HISTORICAL CONTEXT

Historical period: c. Federation 1890 – 1914

History:

The land on which “Jessie’s Cottage” currently exists was initially purchased by John Eastwood in 1869. The title was transferred to James Dunn in 1880 and then to William Taylor in c. 1893¹. The Taylor family held onto the property until it was transferred to Mervyn Dodt in 1955 and later the Gatton Shire Council in 1992².

Subsequent to the Taylor family’s emigration from Scotland in 1879, Jessie’s Cottage was reportedly constructed in 1899 by William Taylor³, however this date could be earlier.

When the title was transferred to the Dodt family in 1955, it is reported that William’s daughter, Jessie, was allowed to remain in the cottage until her passing in 1966. Jessie was one of the five Taylor children and was known later in life as a recluse and an eccentric but appears to have been well thought of by the local community⁴.

The cottage was restored in 1997 by the community in the style of the 1930s and 1940s. It has been utilised by the local community ever since as a meeting place. In 2018, it became the Jessie’s Cottage Local History Museum⁵. The museum, still in use today, holds many local artefacts including furniture and fittings⁶.

Historical themes:

1. Peopling places.
- 1.2. Migration from outside and within.
6. Building settlements, towns, cities and dwellings.
- 6.4. Dwellings.

PHYSICAL DESCRIPTION

Jessie's Cottage is a rectangular plan timber structure, low set on timber stumps, and clad in weatherboard. The residence has a steeply pitched gabled roof clad in a contemporary corrugated iron. The roof encompasses the front and rear verandahs.

Entrance to the cottage is from the northern verandah via short steps with steel railing. The western end of the verandah has been enclosed with weatherboard. Two different styles of sash windows are present on the front, as well as a contemporary entrance door and an earlier four-panel door.

The southern verandah features a simple timber balustrade and timber posts. A short set of steps lead up to the verandah. Sash windows exist on either side of the central four-panel doorway. A sash window is also extant on the western elevation.

A contemporary access ramp with horizontal timber boards is present on the western side, leading to the rear. The eastern side of the cottage features a simple garden and a contemporary shed and water tank. The cottage is enclosed by a timber picket fence, and a relocated Lockyer Railway Building is present nearby. A contemporary playground is present to the northern side of the cottage.

STATEMENT OF SIGNIFICANCE

| Criterion: | Description: |
|-------------------------|---|
| 1. Historical | Reportedly constructed in 1899 by William Taylor, Jessie's Cottage demonstrates the historical development of Murphys Creek as a late 19 th century rural cottage. It is closely associated with the Taylor family, specifically Jessie Taylor, who was well-known within the Murphys Creek community. The cottage has continued to be utilised by the local community since Council's acquisition of it in c. 1992. |
| 2. Scientific | Does not currently threshold. |
| 3. Typological | Jessie's Cottage is an example of a late 19 th century rural cottage in the Lockyer region. |
| 4. Aesthetic | Does not currently threshold. |
| 5. Social and Spiritual | Jessie's Cottage holds social significance for the local community as a marker of early settlement in Murphys Creek. |

Statement summary:

Reportedly constructed in 1899 by William Taylor, Jessie's Cottage demonstrates the historical development of Murphys Creek as a late 19th century rural cottage. It is closely associated with the Taylor family, specifically Jessie Taylor, who was well-known within the Murphys Creek community. The cottage has continued to be utilised by the local community since Council's acquisition of it in c. 1992. It is an example of a late 19th century rural cottage in the Lockyer region and holds social significance for the local community as a marker of early settlement in Murphys Creek.

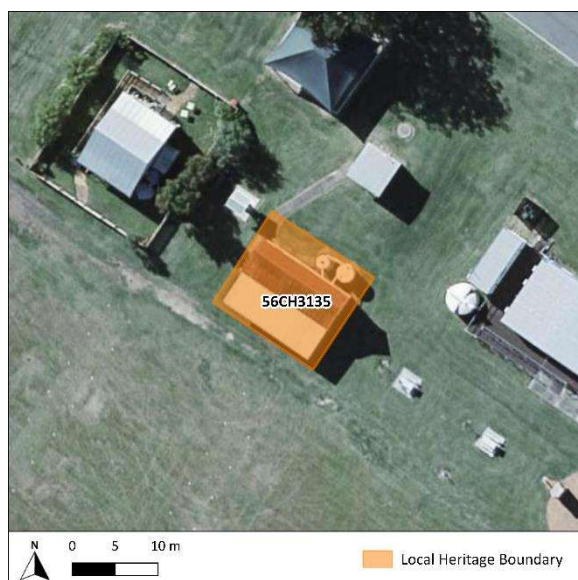
REFERENCES

1. Queensland Titles Registry. (1869-1893). *A. Land Purchase: No. 20628*. Register Book Vol. 152, Folio 139.
2. Queensland Titles Registry. (1925 -1992). *Certificate of Title: No. 288033*. Register Book Vol. 1587, Folio 23.
3. Luvya Lockyer. (2022). *Murphys Creek Historic Heritage Railway Sites* [Brochure]. Retrieved from https://issuu.com/lockyervalleyregionalcouncil/docs/murphyscreek_a5_web.
4. Luvya Lockyer. (n.d.). *Jessies Cottage Local History Museum*. Retrieved from <https://www.luvyalockyer.com.au/jessies-cottage-local-history-museum>; Museum & Galleries Queensland (n.d.). *Jessie's Cottage Local History Museum*. Retrieved from <https://magsq.com.au/museum-gallery/jessies-cottage/>.
5. Luvya Lockyer. (2022). *Murphys Creek Historic Heritage Railway Sites* [Brochure]. Retrieved from https://issuu.com/lockyervalleyregionalcouncil/docs/murphyscreek_a5_web.
6. Ibid.

LOCKYER VALLEY LOCAL HERITAGE STUDY



| | | | |
|------------------------|-------------------------------|---------------------------------------|----------|
| PLACE NAME | Lockyer Rail Station (former) | | |
| OTHER NAMES | Lockyer Siding Station | | |
| PLACE ID NUMBER | LHP0605 | | |
| ADDRESS | 18 Jessie Lane, Murphys Creek | Lot on Plan or GPS Coordinates | 56CH3135 |



HISTORICAL CONTEXT

Historical period: Federation 1890-1914

History:

The railway to Toowoomba opened in May 1867¹. The station building located at 18 Jessie Lane, Murphys Creek is reportedly the former Lockyer Rail Station². The Lockyer Siding branch line was reportedly built by 1870 to serve a nearby quarry, with the Lockyer Rail Station building being reportedly constructed in 1906³. There are some conflicting accounts which suggest that the station building was also constructed in 1870⁴.

As indicated by historical maps, Lockyer Station previously existed between Helidon and Murphys Creek, near the junction of the current Lockyer Siding Road and the railway line (-27.507679, 152.083718)⁵.

Historical aerial imagery indicates where buildings were previously located alongside the railway that appear to be railway structures⁶. A long rectangular building that appears to be of a similar dimension to the station building at 18 Jessie Lane, Murphys Creek, was removed from Lockyer Siding Road between 1993 and 1997. This aligns with the station building appearing at 18 Jessie's Lane between 1993 and 1997⁷.

The former Lockyer Rail Station is reported to have been used as a post office for a period of time, with a post box allegedly being situated on the platform elevation⁸.

Historical themes: 5. Moving goods, people and information.
5.3 Using rail.

PHYSICAL DESCRIPTION

The former Lockyer Rail Station is a small, narrow, rectangular building low set on timber stumps and clad in weatherboard. The pitched gable roof is clad in corrugated iron. There is a small verandah roof that extends on the south / south-western elevation that is supported by curved brackets. Both the roof and verandah roof have simple timber fascia boards. Extending from the verandah roof is a contemporary skillion extension with concrete slab.

The front of the building (southwestern elevation) features a pair of timber doors, sash windows covered with vertical security bars, and a small, enclosed porch area on the western side. Small timber steps lead up to the porch and two doorways. Within the porch area is what appears to be an old ticket window and there is also a timber bench. The porch area consists of a beaded horizontal T&G board, as well as vertical beaded VJ.

The building has timber sash windows on each elevation, some with a vertical security grate over the top. Two contemporary water tanks, one that is situated on top of a timber platform, exist on the northern elevation.

The station is in the vicinity of Jessie's Cottage, on the same allotment.

STATEMENT OF SIGNIFICANCE

| Criterion: | Description: |
|-------------------------|--|
| 1. Historical | Although relocated to its current location in the 1990s, the Lockyer Rail Station (former) building demonstrates the evolution of Queensland's railway which played an important role in the development of the Lockyer Valley Region. |
| 2. Scientific | Does not currently threshold. |
| 3. Typological | The Lockyer Rail Station (former) building demonstrates characteristics of a small early 20 th century railway station building. |
| 4. Aesthetic | Does not currently threshold. |
| 5. Social and Spiritual | Does not currently threshold. |

Statement summary:

The Lockyer Rail Station (former) building retains characteristics of an early 20th century railway station and demonstrates the evolution of Queensland's railway which played an important role in the development of the Lockyer Valley Region.

REFERENCES

1. Opening of the Railway to Toowoomba. (1867, May 18). *The Brisbane Courier*, p. 3. Retrieved from <http://nla.gov.au/nla.news-article1284213>.
2. Buchanan Architects. (2000). *Gatton Shire Cultural Heritage Study*. Gatton Shire Council.
3. Bennett, H. (1999). *Gatton Shire: Thematic Historical Overview*. Cultural Heritage Branch, Queensland Environmental Protection Agency.
4. Luvya Lockyer. (n.d.). *Murphys Creek Historic, Heritage & Railway Sites*. Retrieved from https://issuu.com/lockyervalleyregionalcouncil/docs/murphyscreek_a5_web.

5. Survey Office. (1943). *Parish of Helidon, County of Cavendish, Toowoomba & Ipswich Land Agent's District, Moreton, Queensland*. Department of Public Lands, Brisbane. Retrieved from <https://apps.information.qld.gov.au/data/v2/HistoricalMaps/StaticMap/cadastral/cad-map-40chain-parish-helidon-1943/original>.
6. QImagery. 1933 - 1997 Aerial Imagery. Retrieved from <https://qimagery.information.qld.gov.au/>.
7. Ibid.
8. Buchanan Architects. (2000). *Gatton Shire Cultural Heritage Study*. Gatton Shire Council.

DRAFT