



Lockyer Valley Local Heritage Study

Helidon Citations

Draft for Consultation

July 2025

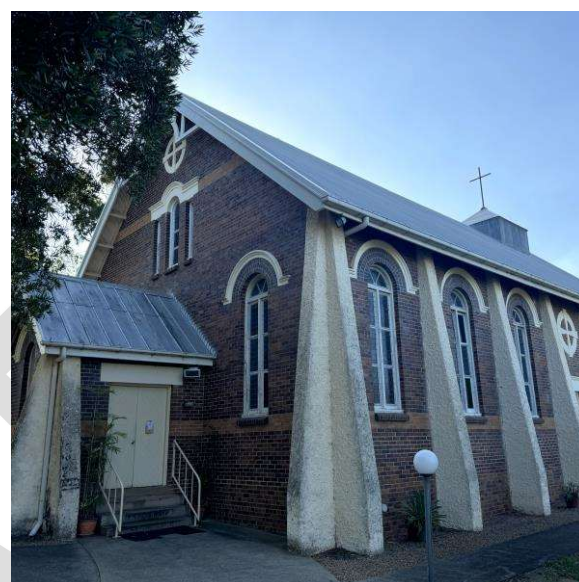
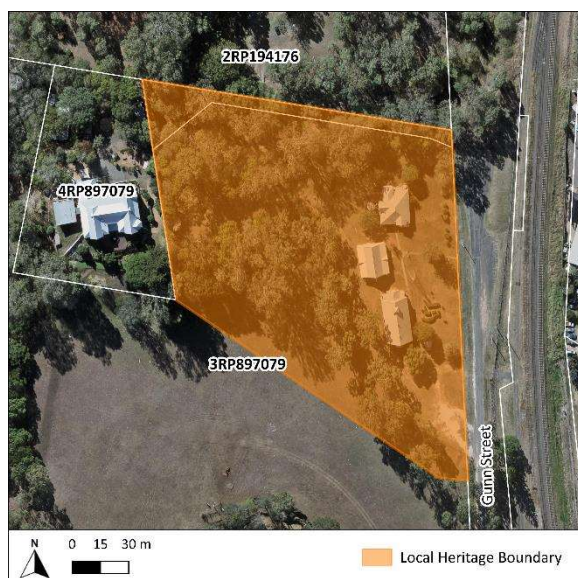
CONTENTS

LHP0402	Helidon Catholic Cemetery	53 Helidon Dip Road	Helidon	Lot 3 RP897079
LHP0403	Criterion Hotel	1 Railway Street (corner Turner Street)	Helidon	Lot 1 RP53098; Lot 2 RP53098; Road Reserve
LHP0404	Helidon Post Office and Residence	13-15 Turner Street	Helidon	Lot 1 SP303410; Lot 2 SP303410
LHP0405	Helidon War Memorial and Trees	Railway Street	Helidon	Road Reserve
LHP0406	Helidon Police Complex	17-21 Turner Street	Helidon	Lot 142 H1263
LHP0407	Helidon Butcher's Shop and Residence (former)	16-18 Railway Street	Helidon	Lot 2 RP84646; Lot 2 RP199749; Road Reserve
LHP0408	26 Railway Street, Helidon (Shop)	26 Railway Street	Helidon	Lot 8 RP23157; Road Reserve
LHP0409	14 Railway Street, Helidon (Shop)	14 Railway Street	Helidon	Lot 1 RP199749; Road Reserve
LHP0410	Helidon General Cemetery	Cemetery Road	Helidon	Lot 146 CA311190
LHP0411	Helidon St Paul's Lutheran Church (former)	60 Railway Street	Helidon	Lot 28 RP23148
LHP0412	552 Connors Road, Helidon (Residence)	552 Connors Road	Helidon	Lot 131 CSH51
LHP0413	Wright Residence	18 Wrights Road	Helidon	Lot 1 RP59783
LHP0414	Helidon St Joseph's Convent (former)	37 Gunn Street	Helidon	Lot 4 RP897079

LOCKYER VALLEY LOCAL HERITAGE STUDY



PLACE NAME	Helidon St Joseph's Catholic Church Complex		
OTHER NAMES	Helidon St Joseph's Roman Catholic Church Complex		
PLACE ID NUMBER	LHP0401		
ADDRESS	35 Gunn Street, Helidon	Lot on Plan or GPS Coordinates	3RP897079



HISTORICAL CONTEXT

Historical period: World War I 1914 – 1918

History:

Catholicism was present in Helidon by 1866 with the erection of St Andrew's Catholic Church¹. Likely due to the growing congregation, a new church complex was to be constructed on a different lot of land on the western side of the railway line and would be named St Joseph's. The St Joseph's Catholic Church, designed by Ipswich architects R. Coutts and Sons, had commenced construction under Ipswich contractor Mr. R. Worley by March 1914. It was anticipated to be the largest church between Ipswich and Toowoomba². The original St Andrew's Church had been destroyed by a storm a month later³. The new St Joseph's Catholic Church officially opened in September 1914. It was described as featuring a semi-octagonal sanctuary with two vestries and large lead light windows⁴.

The original Catholic school was in operation by 1871⁵, however, a new Catholic School designed by prominent architect Mr. G. H. M. Addison was officially opened on the same land as the church in August 1915. The school was described as having three music rooms at one end in addition to the main classroom⁶. The school, located between the presbytery and the church, was originally located adjacent to the 1916 St Joseph's Convent⁷ located 150 metres west of the church and was moved to its present location between 1992-1993⁸. The presbytery was constructed after the convent sometime prior to 1924⁹. In 1939, the church bell was erected on the grounds¹⁰.

The church continues its original use. The current use of the former school and presbytery are unknown.

Historical themes:

- 8. Creating social and cultural institutions.
- 8.1. Worshipping and religious institutions.

	<p>8.2. Cultural activities.</p> <p>8.6. Commemorating significant events.</p> <p>9. Educating Queenslanders.</p> <p>9.1. Primary schooling.</p>
--	--

PHYSICAL DESCRIPTION

The Helidon St Joseph's Catholic Church complex is comprised of the church, school (former) and presbytery (former). At the main entry of the complex is a contemporary metal lattice shelter housing a portrait titled "Saint Joseph, our Parish Patron" and a stone with Helidon Heritage Walk signage.

The church is a good example of an early 20th century church in rural Queensland. The church is a brick structure with rendered buttresses on each elevation. The gable roof is clad with corrugated iron with two vents and a pyramid roofed cupola topped with a simple cross. The front gable end (southern elevation) features decorative timber battens with a timber semi-circle outlining a Celtic cross on the brick wall. Below the Celtic cross is a set of three narrow windows with decorative header moulding and brick windowsills. In line with the decorative moulding is brick banding that extends across the wall horizontally.

Below this is a central front porch flanked by two narrow arched windows with brick arches, label moulds, brick windowsills, with similar brick banding underneath. The porch features a gable pencil ribbed standing seam roof with a decorative timber battened gable topped with a Celtic cross. The southern elevation of the porch has a single pane arched window with the same decorative features as the windows flanking the porch, with brick banding below along with the foundation stone. The eastern elevation of the porch features French doors with diagonal timbers accessed via masonry steps with a contemporary metal balustrade. The western elevation of the porch features a contemporary access ramp.

The side elevations feature the same style windows as those that flank the porch between each buttress. Brick banding is present underneath the windowsills across the elevation. At the centre is a door with a moulded lintel accessed via masonry steps. Above the door, a large Celtic cross adorns the wall.

The northern elevation the same gable end battening as the southern elevation but has two circle windows. This elevation features a semi-octagonal sanctuary with two vestries. The sanctuary features a gable pencil ribbed standing seam roof with a decorative timber battened gable end topped with a simple cross. The sanctuary has the same arched windows as the front porch. The vestries feature a skillion pencil ribbed standing seam roof with a brick parapet. Masonry steps lead to a timber door with moulded lintel. The northern elevation does not feature brick banding.

To the northeast of the church is the church bell housed in a large frame with a corrugated iron roof topped with a simple cross.

The former school, located north of the church, is a symmetrical lowset timber structure clad in chamferboard with a corrugated iron gable roof featuring roof vents. The gable ends feature decorative timber battening. The western and eastern elevations feature a verandah, whilst the eastern elevation is partially enclosed. The verandah consists of VJ walls and timber bracing and is sheltered by a skillion and entry gable roof. The entry, accessed via timber steps with a contemporary metal balustrade, features decorative timber fretwork supported by stop chamfered posts and a timber dowel balustrade. On the eastern elevation, two casement windows are present south of the entry.

The southern elevation features a central set of awning windows sheltered by a skillion window hood. Below is a contemporary access ramp. To the east of the windows is a door accessed via timber steps and a contemporary metal balustrade leading inside the enclosed verandah.

The presbytery, located north of the former school, is a highset asymmetrical timber bungalow. The hip and valley roof is clad in corrugated iron with gable ends topped with a Celtic cross on the southern and western elevations. The L-shaped verandah, accessed via timber steps, features a slatted balustrade, VJ walls with exposed framing, and French doors with fanlights. A contemporary screen door is present adjacent to the front timber steps. Sash windows with curved window hoods are present across the elevations.

Mature plantings are present across the site.

STATEMENT OF SIGNIFICANCE

Criterion:	Description:
1. Historical	The Helidon St Joseph's Catholic Church Complex hold historical significance as it demonstrates the development and evolution of the Catholicism in Hatton Vale and the wider Lockyer district from the early 20 th century.
2. Scientific	Does not currently threshold.
3. Typological	The Helidon St Joseph's Catholic Church Complex is representative of early 20 th century church, school, and presbytery architecture in rural Queensland, typical design features for each building type.
4. Aesthetic	The Helidon St Joseph's Catholic Church Complex contributes to the visual character of Helidon and is a visually prominent feature within the streetscape.
5. Social and Spiritual	The Helidon St Joseph's Catholic Church Complex holds social and spiritual significance for the local community as a site of early Catholicism. Its ongoing function reinforces its role in fostering spiritual connections and maintaining the cultural identity of the Catholic congregation in Helidon and the Lockyer Valley.

Statement summary:

The Helidon St Joseph's Catholic Church Complex is historically significant for its role in the development of Catholicism in Helidon. It is representative of a well-designed early 20th century style church in rural Queensland, and typical design of rural school and presbytery buildings. The complex contributes to the visual character of Helidon and is a visually prominent feature within the streetscape. The complex holds social and spiritual importance as a site of early Catholicism, with the church's ongoing function reinforcing its role in fostering spiritual connections and maintaining the cultural identity of the Catholic congregation in Helidon.

REFERENCES

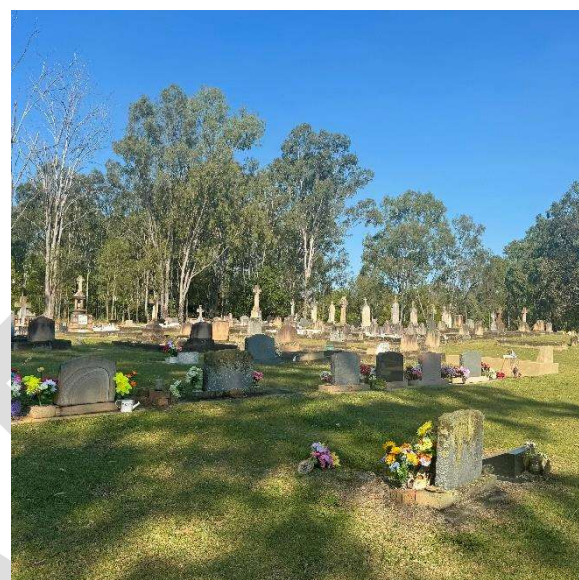
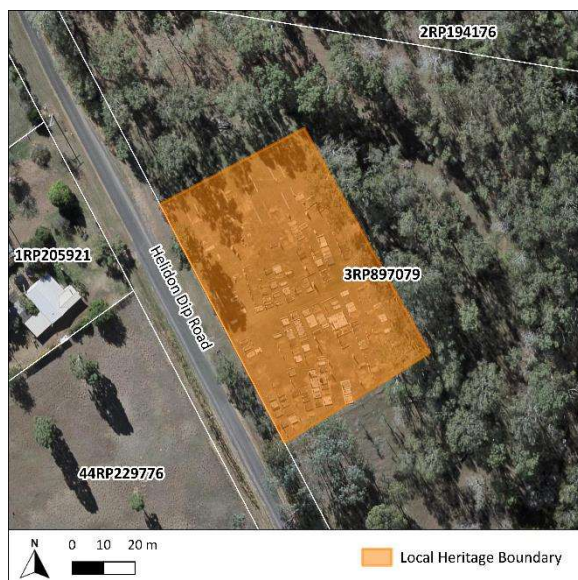
1. Religious. (1866, December 20). *Queensland Times, Ipswich Herald, and General Advertiser*, p. 5. Retrieved from <http://nla.gov.au/nla.news-article123331646>.
2. St Joseph's Church, Helidon. (1914, March 9). *The Queensland Times*, p. 6. Retrieved from <http://nla.gov.au/nla.news-article120424600>.

3. The Storm at Helidon. (1914, April 8). *The Western Star*, p. 3. Retrieved from <http://nla.gov.au/nla.news-article98158540>.
4. New Catholic Church at Helidon. (1914, September 29). *The Queensland Times*, p. 2. Retrieved from <http://nla.gov.au/nla.news-article123037691>.
5. Bennett, H. (1999). *Gatton Shire: Thematic Historical Overview*. Cultural Heritage Branch, Queensland Environmental Protection Agency.
6. New School Opened. (1915, August 2). *The Brisbane Courier*, p. 5. Retrieved from <http://nla.gov.au/nla.news-article20050637>.
7. Helidon's New Convent Blessed and Opened. (1916, May 25). *The Catholic Advocate*, p. 15. Retrieved from <http://nla.gov.au/nla.news-article258326290>.
8. QImagery. 1992 & 1993 Aerial Imagery. Retrieved from <https://qimagery.information.qld.gov.au/>.
9. Helidon. (1924, December 2). *The Brisbane Courier*, p. 7. Retrieved from <http://nla.gov.au/nla.news-article22894382>.
10. Helidon. (1939, May 1). *The Queensland Times*, p. 8. Retrieved from <http://nla.gov.au/nla.news-article114152218>.

LOCKYER VALLEY LOCAL HERITAGE STUDY



PLACE NAME	Helidon Catholic Cemetery		
OTHER NAMES	Helidon Roman Catholic Cemetery		
PLACE ID NUMBER	LHP0402		
ADDRESS	53 Helidon Dip Road, Helidon	Lot on Plan or GPS Coordinates	Part of 3RP897079



HISTORICAL CONTEXT

Historical period: Victorian 1860 – 1890

History:

The Helidon Catholic Cemetery is located nearby the Roman Catholic Convent¹. Multiple headstones within the cemetery are engraved by J. Simmonds, from Brisbane's Stone and Marble Masons². Memorials on the site date back to at least 1883. The cemetery remains in use today.

Historical themes:

- 6. Building settlements, towns, cities, and dwellings.
 - 6.2. Planning and forming settlements.
- 8. Creating social and cultural institutions.
 - 8.1. Worshipping and religious institutions.
 - 8.2. Cultural activities.
 - 8.6. Commemorating significant events.

PHYSICAL DESCRIPTION

The Helidon Catholic Cemetery is situated on a cleared grassed lot surrounded by dense trees. The frontage is enclosed by a chain link fence and gate, whilst the remaining side are enclosed by a wire fence connected via metal pickets. A shelter is present on the eastern boundary of the cemetery.

The cemetery features a relatively uniform layout, with both contemporary and historical graves. Headstones and memorials are generally consistent featuring tablet-style and cross monuments (including Celtic Crosses). Minimal graves feature iron fencing.

STATEMENT OF SIGNIFICANCE	
Criterion:	Description:
1. Historical	The Helidon Catholic Cemetery holds historical significance as a burial site for the Catholic community, dating to at least the 1880s. Its association with the nearby Roman Catholic Convent and continued use for over a century further underscores its role in the social and religious development of Helidon.
2. Scientific	Does not currently threshold.
3. Typological	As a rural cemetery, the Helidon Catholic Cemetery is representative of late 19 th and early 20 th century burial sites in rural Queensland. It reflects typical memorial designs and functions of its time.
4. Aesthetic	Does not currently threshold.
5. Social and Spiritual	The Helidon Catholic Cemetery holds strong social and spiritual significance to the local community, particularly for the Catholic congregation. It serves as an ongoing place of remembrance and respect for the deceased.
Statement summary: The Helidon Catholic Cemetery is historically significant as a key burial site for the local Catholic community of Helidon, dating to at least the 1880s. It is closely associated with the nearby Roman Catholic Convent and reflects the social and religious development of Helidon. The cemetery is representative of late 19 th and early 20 th century Catholic burial practices, reflecting typical memorial designs and functions of its time. The cemetery holds social and spiritual significance as a place of ongoing cultural and religious connection for the community, serving as a resting place for generations of residents and continuing in use to the present day.	
REFERENCES	
1. Late Mr. M. J. Flynn: Funeral Yesterday. (1928, October 3). <i>The Toowoomba Chronicle and Darling Downs Gazette</i> , p. 6. Retrieved from http://nla.gov.au/nla.news-article254042256 . 2. Trades Directory. (1902). In <i>Queensland Post Office Directory</i> (p. 97). Wise.	

LOCKYER VALLEY LOCAL HERITAGE STUDY

PLACE NAME	Criterion Hotel		
OTHER NAMES	N/A		
PLACE ID NUMBER	LHP0403		
ADDRESS	1 Railway Street (corner Turner Street), Helidon	Lot on Plan or GPS Coordinates	1RP53098; Road Reserve



HISTORICAL CONTEXT

Historical period: Federation 1890 – 1914

History:

The Criterion Hotel, originally owned by Charles Gunne, was constructed in 1914 to replace the earlier Criterion Hotel. In c. 1888, Gunne bought the Harp of Erin Hotel at Helidon, which he owned until c. 1894, at which time he constructed the first Criterion Hotel on the current site¹. It is unclear why the first Criterion Hotel was replaced, however, Gunne continued to own the current building until 1927, when ownership transferred to Mr. S. G. Morrow². Over the years, the hotel has been well patronised by the community and visitors for accommodation and social events, including monthly meetings of the Helidon and District Progress Association³ and as a reception venue for weddings⁴.

It continues its historical use as a hotel, however, it is unclear if it still offers accommodation.

Historical themes:

- 3. Developing secondary and tertiary industries.
 - 3.1. Feeding Queenslanders.
 - 3.11. Lodging people.

PHYSICAL DESCRIPTION

The Criterion Hotel is a two-storey brick structure with a corrugated iron hip roof featuring an early chimney and ridgeline vents, located on the prominent intersection of Railway and Turner Streets. Extending across the street frontage elevations (northeastern and eastern elevations) is a first-level corrugated iron bullnose verandah supported by timber stop chamfer posts with decorative brackets and is bound by a two-rail slat timber balustrade. Along the verandah are French doors with fanlights and brick voussoirs. Contemporary air conditioning units are present throughout. The northernmost end of the verandah has been enclosed by FC sheeting with casement windows installed. The verandah side on the southern end has also been enclosed by FC sheeting.

The ground-level street frontage elevations feature plain timber posts, different to the first-level verandah. The eastern elevation features a single timber entry door with sidelights, a multi-pane arched fanlight, and a brick arch and is accessed via masonry steps. South of the entry is a rectangular window with a security screen on the lower pane and a brick voussoir. North of the entry is a triple coursed arched window with central security screens and a brick arch. The corner entrance features French doors with a single pane arched fanlight and brick arch. It is accessed via masonry steps and is flanked by pilasters. The northeastern elevation features the same style rectangular windows as the eastern elevation. Central to this elevation is a timber door with sidelights, larger than that of the eastern elevation, segmented arched fanlight, and a brick arch and is accessed via a masonry step. Early vents are present above the skirting along the street frontage elevations.

The northwestern elevation features the chimney extending along both levels. The ground level features the same style of windows as the street frontage elevations, whilst the first-level windows are sash windows with brick voussoirs. A timber and FC sheeted extension with a sloped roof appears to be present on the southwestern elevation, along with a number of early timber outbuildings and contemporary sheds.

The southern elevation features the same style first-level sash windows as the northwestern elevation. A contemporary extension is present which is enclosed by roller doors. The street frontage (eastern elevation) of the extension features a timber balustrade and a short stone fence enclosing a garden bed.

The property is bound by a timber fence and all plantings are post-1980 based on aerial imagery.

STATEMENT OF SIGNIFICANCE

Criterion:	Description:
1. Historical	The Criterion Hotel demonstrates the historical development of Helidon in the early 20 th century.
2. Scientific	Does not currently threshold.
3. Typological	The Criterion Hotel is an intact and representative example of early 20 th century two-storey masonry hotel buildings.
4. Aesthetic	The Criterion Hotel holds aesthetic significance for its prominent corner location and its contribution to the historical main street of Helidon as a historical commercial precinct.

5. Social and Spiritual	The Commercial Hotel holds social significance for the local community as a gathering and accommodation space in use for over a century.
-------------------------	--

Statement summary:

The Criterion Hotel demonstrates the historical development of Helidon in the early 20th century. It is an intact and representative example of early 20th century two-storey masonry hotel buildings. It holds aesthetic significance for its prominent corner location and its contribution to the historical main street of Helidon as a historical commercial precinct. It holds social significance for the local community and visitors, as a hotel and accommodation space in use for over a century.

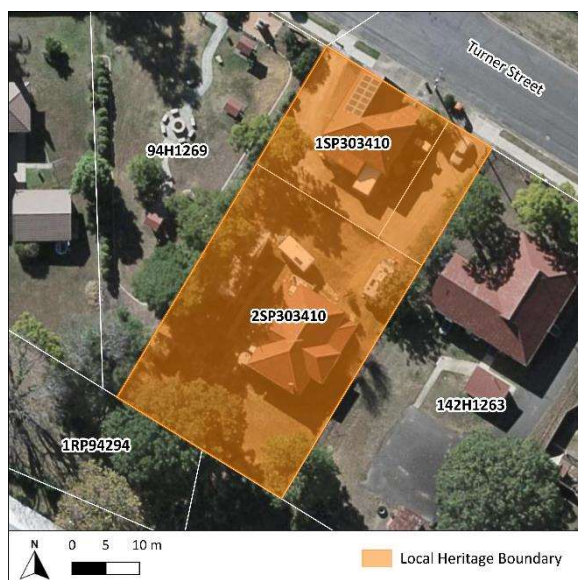
REFERENCES

1. Mr. Charles Gunne. (1928, May 12). *The Queensland Times*, p. 13. Retrieved from <http://nla.gov.au/nla.news-article114197867>.
2. District News. (1927, October 10). *The Toowoomba Chronicle and Darling Downs Gazette*, p. 10. Retrieved from <http://nla.gov.au/nla.news-article253997701>; Mr. Charles Gunne. (1928, May 12). *The Queensland Times*, p. 13. Retrieved from <http://nla.gov.au/nla.news-article114197867>.
3. Our Helidon Letter. (1914, December 18). *The Queensland Times*, p. 2. Retrieved from <http://nla.gov.au/nla.news-article123042627>.
4. Walker-Cullinan. (1927, February 26). *The Queensland Times*, p. 12. Retrieved from <http://nla.gov.au/nla.news-article116917434>.

LOCKYER VALLEY LOCAL HERITAGE STUDY



PLACE NAME	Helidon Post Office and Residence		
OTHER NAMES	N/A		
PLACE ID NUMBER	LHP0404		
ADDRESS	13-15 Turner Street, Helidon	Lot on Plan or GPS Coordinates	1SP303410; 2SP303410



HISTORICAL CONTEXT

Historical period: Interwar 1919 – 1939

History:

An early post receiving office and telegraph office was first established in Helidon in 1866 with a later official post and telegraph office in 1910¹. It is unclear why a new post office was required; however, the new Helidon Post Office and Postmaster's Residence was constructed in 1926 by the Thompson Bros² and is said to have housed the first single board manual telephone exchange³. The first Postmaster of the new post office was Mr. B. Scurfield, who transferred from Kilcoy⁴ and acted as Postmaster in Helidon for twelve years⁵.

The Post Office remains in use, whilst the Postmaster's Residence is under private ownership.

Historical themes:

- 5. Moving goods, people and information.
- 5.7. Telecommunications.
- 5.8. Postal services.

PHYSICAL DESCRIPTION

The Helidon Post Office is a typical example of the 1924 – 1940 period type T22 'Single Porch and Gable' post office building. It is an asymmetrical timber structure clad in weatherboard and elevated on low brick stumps divided by timber battening. It has a hip and gable roof clad in corrugated iron with contemporary solar panels.

The front façade (northeastern elevation) features a gable end with decorative timber battening with the words "Helidon Post Office" adorned below with dentils. The front set of three casement windows are sheltered by a hipped window hood clad in metal sheeting. Attached is a front porch with a skillion roof continuing from the main roof. The porch is supported by simple timber posts with a two-railslat timber balustrade. Timber steps with a contemporary metal balustrade provide access to the porch. The porch is clad in VJ boards with contemporary PO boxes and French doors for entry.

The northeastern and southwestern elevations feature a set of three casement windows sheltered by a hipped window clad in shingles. There are contemporary air conditioning units present on the southwestern elevation and contemporary fuse box on the northeastern elevation.

To the rear (southeastern elevation) is a skillion roofed section that would have formerly been the 'mail verandah' which appears to have been enclosed.

The Helidon Postmaster's Residence is located to the rear of the post office. It is a low set timber structure clad in weatherboard. The hip and valley roof is clad in corrugated iron with exposed timber rafters. There are casement windows present with some retaining the hipped window hood clad in shingles as per the post office. The northeastern corner features a porch with the same balustrade detailing as the post office. A matching porch on the northwestern corner has been enclosed and extended, with some early balustrades remaining. A water tank elevated on brick stumps is present to the rear of the building.

STATEMENT OF SIGNIFICANCE

Criterion:	Description:
1. Historical	The Helidon Post Office and Residence demonstrates the historical development of Helidon in the early 20 th century as an essential service in the township.
2. Scientific	Does not currently threshold.
3. Typological	The Helidon Post Office and Residence is a good example of a 1920s rural timber post office complex, including the 1924 – 1940 period type T22 'Single Porch and Gable' post office building.
4. Aesthetic	The Helidon Post Office and Residence stands out as a visually prominent feature within the Turner Street streetscape.
5. Social and Spiritual	The Helidon Post Office and Residence has a strong association with the Helidon community as an ongoing primary centre for postal and telecommunication services for almost a century.

Statement summary:

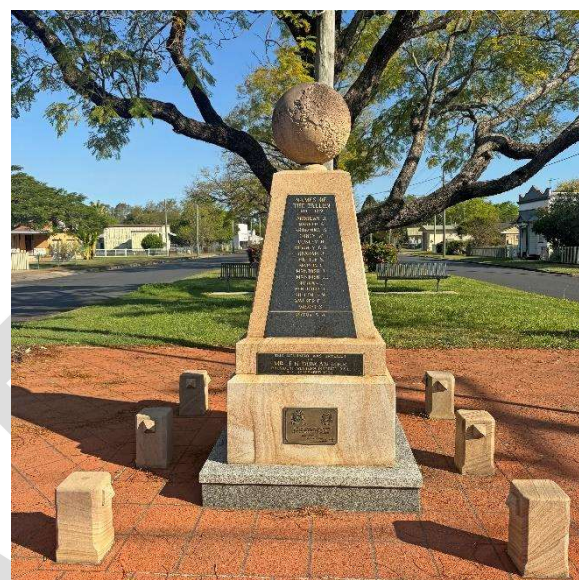
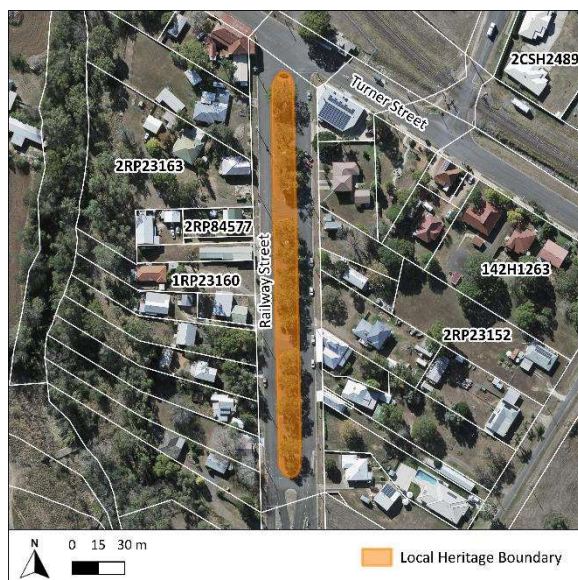
The Helidon Post Office and Residence demonstrates the historical development of Helidon in the early 20th century as an essential service in the township. It is a good example of a 1920s rural timber post office complex, including the principal characteristics of a type T22 'Single Porch and Gable' post office building, and stands out as a visually prominent feature within the Turner Street streetscape. It has a strong association with the local Helidon community as an ongoing primary centre for postal and telecommunication services for almost a century.

REFERENCES

1. Talbot, D., & the Gatton & District Historical Society. (2014). *A History of Gatton & District 1824-2008*. Lockyer Valley Regional Council; Extension of the Railway to Helidon. (1866, July 31). *The Darling Downs Gazette and General Advertiser*, p. 3. Retrieved from <http://nla.gov.au/nla.news-article75516249>.
2. Helidon. (1926, January 9). *The Brisbane Courier*, p. 9. Retrieved from <http://nla.gov.au/nla.news-article20991910>; Helidon. (1926, May 26). *The Brisbane Courier*, p. 14. Retrieved from <http://nla.gov.au/nla.news-article21035454>.
3. Talbot, D., & the Gatton & District Historical Society. (2014). *A History of Gatton & District 1824-2008*. Lockyer Valley Regional Council.
4. Kilcoy. (1925, June 24). *The Brisbane Courier*, p. 11. Retrieved from <http://nla.gov.au/nla.news-article20937237>.
5. Helidon. (1938, November 2). *The Queensland Times*, p. 14. Retrieved from <http://nla.gov.au/nla.news-article118329341>.

LOCKYER VALLEY LOCAL HERITAGE STUDY

PLACE NAME	Helidon War Memorial and Trees		
OTHER NAMES	N/A		
PLACE ID NUMBER	LHP0405		
ADDRESS	Railway Street, Helidon	Lot on Plan or GPS Coordinates	Road Reserve



HISTORICAL CONTEXT

Historical period:

Trees: Interwar 1919 – 1939
War Memorial: Late 20th Century 1960 – 1999

History:

In October 1937, the Helidon and District Progress Association decided to plant Jacaranda trees in the main street of Helidon¹. They were likely planted soon after, with references to local residents preparing holes² and shade and ornamental trees being planted in the main street³. In 1938, Mr. A. Gilchrist was appointed supervisor of trees and street gardens by the association to care for trees such as these⁴. In addition to the beautiful aesthetic, trees planted in the centre of streets lessened the drainage and erosion caused by storm water⁵.

At the northern end of the trees is the Helidon War Memorial. As stated on the monument, it was unveiled by Mr J. N. Duncan (President, Western District R.S.L.) on the 16th of September 1978. The names listed include local fallen soldiers from World War I, World War II, other theatres of war, and deceased members of the R.S.L.A. Helidon Sub-Branch. In 1995, a subsidiary plaque was placed on the original monument, celebrating 50 years of peace *"in honour of the men and women from the district who served Australia in times of conflict"*⁶.

Historical themes:

- 2. Exploiting, utilising, and transforming the land.
- 2.6. Managing flora and fauna.
- 8. Creating social and cultural institutions
- 8.6. Commemorating significant events

PHYSICAL DESCRIPTION

The Jacaranda trees along Railway Street are separated across three grassed median strips, each containing 5-6 trees. Contemporary gazebos with historical information on the Helidon township and benches are present on the two northernmost sections.

The war memorial is located on the northernmost end of the strip. It consists of sandstone blocks on a granite plinth, surmounted by an etched sandstone globe. Engraved plaques are present on each side of the monument. Six low sandstone blocks mark a boundary around the monument.

STATEMENT OF SIGNIFICANCE

Criterion:	Description:
1. Historical	The Helidon War Memorial is representative of fallen soldiers from Helidon since World War I, whilst the 1930s trees are the first central street plantings along Railway Street.
2. Scientific	Does not currently threshold.
3. Typological	Does not currently threshold.
4. Aesthetic	The Helidon War Memorial and Trees are prominent features in the Railway Street streetscape and contribute to the visual amenity of Helidon township.
5. Social and Spiritual	The Helidon War Memorial and Trees have a strong association with the local community of Helidon, with the memorial dedicated to local fallen soldiers and the trees as an early planting in the township.

Statement summary:

The Helidon War Memorial is representative of fallen soldiers from Helidon since World War I, whilst the 1930s trees are the first central street plantings along Railway Street planted for both aesthetic and functionality. The Helidon War Memorial and Trees are prominent features in the Railway Street streetscape and contribute to the visual amenity of Helidon township. They have a strong association with the local community of Helidon, with the memorial dedicated to local fallen soldiers and the trees as an early planting in the township.

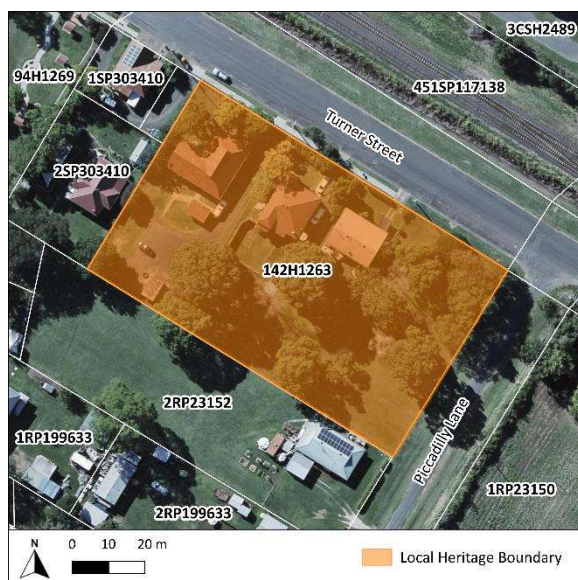
REFERENCES

1. In Country Centres. (1937, October 1). *The Courier Mail*, p. 4. Retrieved from <http://nla.gov.au/nla.news-article37894253>.
2. Tarampa Council. (1937, October 12). *The Queensland Times*, p. 12. Retrieved from <http://nla.gov.au/nla.news-article124593951>.
3. Helidon. (1937, October 28). *The Queensland Times*, p. 12. Retrieved from <http://nla.gov.au/nla.news-article124597387>.
4. Helidon. (1938, March 10). *The Queensland Times*, p. 7. Retrieved from <http://nla.gov.au/nla.news-article116906384>.
5. Trees to be Planted. (1938, May 4). *The Queensland Times*, p. 9. Retrieved from <http://nla.gov.au/nla.news-article115615356>.
6. Helidon War Memorial Plaque.

LOCKYER VALLEY LOCAL HERITAGE STUDY



PLACE NAME	Helidon Police Complex		
OTHER NAMES	N/A		
PLACE ID NUMBER	LHP0406		
ADDRESS	17-21 Turner Street, Helidon	Lot on Plan or GPS Coordinates	142H1263



HISTORICAL CONTEXT

Historical period:

Court House (Main): Federation 1890 – 1914
 Court House (Rear Extension): Interwar 1919 – 1939
 Police Station/Sergeant's Residence: Interwar 1919 – 1939
 Constable's Residence: Postwar 1945 – 1960

History:

The site of the Helidon Police Complex has been in use since c. 1887, when the original Helidon Police Station (no longer extant) was constructed. This served as a Police Station, with cells to the rear, Court House, and Police Residence¹. Between 1909-1910, a new Court House was constructed on the eastern side of the Police Station by contractor J. Doyle², following ongoing requests from the local community for a purpose-built Court House³.

In 1934, architectural plans were developed for constructing an additional wing to the southwestern elevation of the Court House, which would allow the Stock Inspectors to have dedicated office spaces. The front and rear verandahs were expanded to wrap around almost the entire building, with a new balustrade installed to replace the original⁴. Tenders opened in 1935⁵ with the works likely being completed later that year.

By 1937, the original Police Station, which had received many alterations over time, was still used as the Police Residence and now only had one cell. The building, which at this point was c. 50 years old, was said to be in poor condition with a constant need for repairs. As such, numerous requests were being made for a new Police Station to be established⁶.

In 1938, the original Police Station was sold at auction, including the stables and outbuildings, and a new building was constructed in its place as the new Police Station shortly after⁷. In 1957, the

Sergeant was residing in the Police Station, whilst the Constable was renting a house nearby. The Helidon District Progress Association requested that a residence be erected for the Sergeant adjacent to the current buildings as his house was likely “to be condemned” with no other suitable houses available⁸. The additional residence was then constructed in 1959⁹. By 1967, the Police Station was exclusively the Sergeant’s residence with police activities operating out of the Court House, with the Constable continuing to reside in the 1959 residence¹⁰.

The Court House is now used as the Helidon Police Station, whilst the two residences are believed to be under private ownership.

Historical themes:

6. Building settlements, towns, cities, and dwellings.

6.4. Dwellings.

7. Maintaining Order.

7.1. Policing and maintaining law and order.

7.2. Government and public administration.

PHYSICAL DESCRIPTION

The Helidon Court House (later Court House and Police Station) is an L-shaped timber structure elevated on replaced concrete stumps with a corrugated iron cross hipped roof with a Dutch gable roof on the original (central) wing. The original wing is clad in flat horizontal timber boards with exposed studs on the northeastern elevation, with the remaining elevations clad in weatherboard and no exposed studs. The c. 1935 wing is clad in VJ boards with a dado rail. All elevations feature doors with two-pane fanlights, and sash windows.

The wrap around verandah, accessed via timber steps, is supported by timber posts and bound by an early two-rail timber slat balustrade (c. 1935). The southeast corner has been enclosed with weatherboard and FC sheeting. A window shaded by a skillion window hood with side timber battens is present on the northwestern elevation. Some outbuildings appear to be present to the rear of the building.

The former Helidon Police Station/Sergeant’s Residence is located to the east of the Court House. It is a high set timber bungalow with a subfloor batten infill and clad in weatherboard. The corrugated iron hip roof features a front gable with decorative timber battening and a central window with skillion window hood. East of the front gable is a verandah bound by a two-rail timber slat balustrade, with the bays enclosed with timber lattice and contemporary security screens. A small gable porch is present on the northwestern elevation; however, the access stairs that appear in early photographs appear to have been removed. Southwest of this porch are windows with skillion window hoods as per the front gable.

The former Constable’s Residence on the easternmost side of the site is a high set symmetrical timber structure clad in weatherboard, with a corrugated iron low pitched open gable roof. The northeastern elevation features subfloor batten infill on the northwestern side and a subfloor-level garage on the southeastern side. The roof extends over a front porch, accessed via steps on the northwestern side, which is supported by timber posts and bound with a rib pencil iron panelled balustrade surmounted by two-rail timber slats. Windows and doors with security screens are present on the porch. Flanking the porch are awning windows, some with security screens.

Based on aerial imagery, most mature trees on site appear to be post-1980s plantings except for some earlier plantings located east and south of the Constable’s Residence.

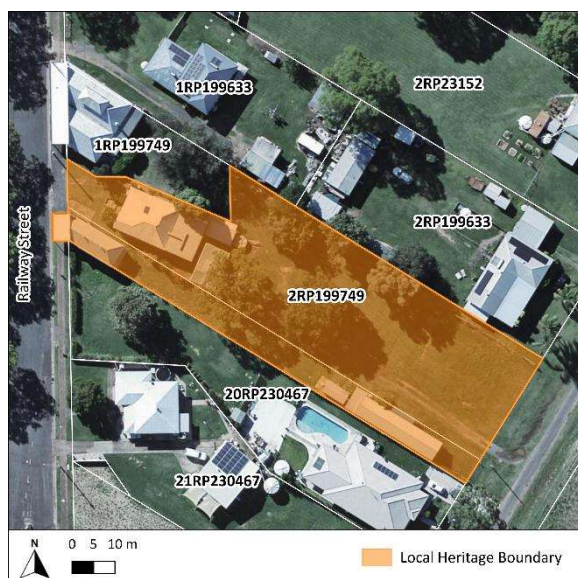
STATEMENT OF SIGNIFICANCE	
Criterion:	Description:
1. Historical	The Helidon Police Complex demonstrates the historical development of Helidon as a growing township and the governing of law and order in the district.
2. Scientific	Does not currently threshold.
3. Typological	The Helidon Police Complex is a representative example of an early 20 th century timber police precinct.
4. Aesthetic	The Helidon Police Complex is a prominent feature in the streetscape, comprising of three buildings along Turner Street.
5. Social and Spiritual	The Helidon Police Complex holds social significance in the local community as an ongoing place of law and order, with the site having been associated with the police since the 1870s and the buildings dating from 1909.
Statement summary: The Helidon Police Complex demonstrates the historical development of Helidon in the early 20 th century as a growing township. It is a representative example of an early 20 th century timber police precinct and is a prominent feature in the streetscape, comprising of three buildings along Turner Street. The complex holds social significance in the local community as an ongoing place of law and order with continuous use for over a century, with the site having been associated with the police since the 1870s and the buildings dating from 1909.	
REFERENCES	
1. Official Notifications. (1887, January 15). <i>The Week</i> , p. 7. Retrieved from http://nla.gov.au/nla.news-article182623611 ; General News. (1887, June 18). <i>The Queenslander</i> , p. 979. Retrieved from http://nla.gov.au/nla.news-article19925557 ; Sub-Inspector's Office, Ipswich, Police Department. (1937, March 29). <i>Letter to Unknown Recipient</i> . Helidon Police Station – Queensland State Archives. Item ID: 309384. Retrieved from https://www.archivessearch.qld.gov.au/items/ITM309384 ; Department of Justice. (1907, October 7). <i>Letter to Unknown Recipient</i> . Helidon Court House – Queensland State Archives. Item ID: 301078. Retrieved from https://www.archivessearch.qld.gov.au/items/ITM301078 . 2. Helidon Court House. (1909, July 15). <i>The Telegraph</i> , p. 2. Retrieved from http://nla.gov.au/nla.news-article180660098 ; Queensland Government. (1909). <i>Helidon Court House</i> . Item ID: 301078. Retrieved from https://www.archivessearch.qld.gov.au/items/ITM301078 ; Advertising. (1910, March 17). <i>Darling Downs Gazette</i> , p. 8. Retrieved from http://nla.gov.au/nla.news-article182907607 . 3. Under Secretary, Department of Justice. (1909, March 26 th). <i>Letter to the Attorney General</i> . Helidon Court House – Queensland State Archives. Item ID: 301078. Retrieved from https://www.archivessearch.qld.gov.au/items/ITM301078 . 4. Department of Public Works. (1934). <i>Additions to Court House Helidon</i> . Queensland State Archives. Item ID: 580985. Retrieved from https://www.archivessearch.qld.gov.au/items/ITM580985 ; Gabbett, J. J. (1935, November 29).	

- Letter to the Department of Public Works*. Helidon Court House – Queensland State Archives. Item ID: 301078. Retrieved from <https://www.archivessearch.qld.gov.au/items/ITM301078>
5. Advertising. (1935, February 20). *The Queensland Times*, p. 1. Retrieved from <http://nla.gov.au/nla.news-article119448840>.
 6. Sub-Inspector's Office, Ipswich, Police Department. (1937, March 2). *Letter to Unknown Recipient*. Helidon Police Station – Queensland State Archives. Item ID: 309384. Retrieved from <https://www.archivessearch.qld.gov.au/items/ITM309384>; Sub-Inspector's Office, Ipswich, Police Department. (1937, March 29). *Letter to Unknown Recipient*. Helidon Police Station – Queensland State Archives. Item ID: 309384. Retrieved from <https://www.archivessearch.qld.gov.au/items/ITM309384>.
 7. Advertising. (1938, April 16). *The Queensland Times*, p. 14. Retrieved from <http://nla.gov.au/nla.news-article116892735>; Maize and Cotton on the Downs. (1938, April 29). *The Courier Mail*, p. 8. Retrieved from <http://nla.gov.au/nla.news-article39727624>; Carroll, C. J. (Commissioner of Police). (1938, October 12). *Letter to the Department of Public Works*. Helidon Police Station – Queensland State Archives. Item ID: 290045. Retrieved from <https://www.archivessearch.qld.gov.au/items/ITM290045>.
 8. Chalk, G. W. (Minister for Transport) (1957, December 4). *Letter to K. J. Morris (Minister for Labour and Industry)*. Helidon Police Station – Queensland State Archives. Item ID: 290045. Retrieved from <https://www.archivessearch.qld.gov.au/items/ITM290045>.
 9. Wesener, L. W. H. (Senior Constable). (1959, July 27). *Letter to the Inspector of Police, Ipswich*. Helidon Police Station – Queensland State Archives. Item ID: 290045. Retrieved from <https://www.archivessearch.qld.gov.au/items/ITM290045>.
 10. Overson, C. H. (1967, February 20). *Letter to the Inspector of Police, Ipswich*. Helidon Police Station – Queensland State Archives. Item ID: 290045. Retrieved from <https://www.archivessearch.qld.gov.au/items/ITM290045>.

LOCKYER VALLEY LOCAL HERITAGE STUDY



PLACE NAME	Helidon Butcher's Shop and Residence (former)			
OTHER NAMES	N/A			
PLACE ID NUMBER	LHP0407			
ADDRESS	16-18 Railway Street, Helidon	Lot on Plan or GPS Coordinates	2RP84646; 2RP199749; Reserve	Road



HISTORICAL CONTEXT

Historical period: Federation 1890 – 1914

History:

William Plant, butcher, purchased the land for the Helidon Butcher's Shop and Residence (former) in 1893¹, however, the butcher's shop was not constructed until 1909². The construction date of the associated residence is unclear, though it was either built around the same time as the shop, or soon after the land was purchased. The Plant family were butchers in Helidon since at least 1888³, with William working at the family butcher with his father James by at least 1892⁴. William came to run his own butcher's business with his brother Richard⁵, presumably after his father's death in 1895⁶.

In 1909, William commissioned contractor Mr. J. Thompson of Rosewood to construct him a large, modern butcher's shop which included roof ventilators patented by Mr. W. Cuffee of Helidon⁷. In 1916, a fire erupted on the main street but residents saturated William's residence and butcher's shop in water and although the shop corner caught fire, they saved both buildings from being severely damaged⁸.

In 1919, William was forced to close his butcher's shop due to drought conditions that led to a shortage of suitable cattle⁹. With limited local supply, residents resorted to purchasing meat from Brisbane, but it often arrived in poor condition. In response, the community petitioned for a State butcher's shop in Helidon. William offered to rent his shop to the government or distribute meat on their behalf, but the government declined to commit at that time¹⁰. It is assumed that William reopened his shop at the end of the drought, and in 1928 he sold the business to Mr. E. Porter of Dalby who had the shop renovated¹¹.

William Plant passed away in 1935 after a successful career as a butcher and a dedicated member of the Helidon community. He was a founding member of the Masonic Lodge, a trustee for several local sites, and played key roles in the Helidon and District Progress Association, Cemetery Trust, and State School Committee¹².

The building remained in commercial use until at least 2000 when it was a laundromat¹³. Its current use is unknown, whilst the residence is believed to be under private ownership.

Historical themes:

3. Developing secondary and tertiary industries.

3.1. Feeding Queenslanders.

3.8. Marketing, retailing, and service industries.

PHYSICAL DESCRIPTION

The Helidon Butcher's Shop (former) is a symmetrical, rectangular timber building, set on an angle to the boundary, and clad in fibro-cement (FC) sheeting on the front façade (western elevation) and weatherboard on the remaining elevations. The corrugated iron hip roof features early ridgeline vents and a parapet with gabled peak clad in chamferboard. A corrugated iron bullnose awning, with FC-sheeted sides, extends across the footpath and is supported by stop chamfer timber posts with capitals.

The front façade features continuous windows flanking the main entry door which is accessed via masonry steps. The northern and southern elevations feature continuous high set louvred ventilation windows, whilst the northern elevation also includes a side access door and window.

The Helidon Butcher's Residence (former) is an example of a late 19th to early 20th century timber residence. It is a lowset, asymmetrical timber residence clad in weatherboard. It features a corrugated iron short ridged roof with one front gable with decorative timber battening and central window. The front verandah features a separate convex corrugated iron roof supported by timber stop chamfer posts with capitals and brackets. It extends along the northern side and is bound by a three-rail balustrade. Windows with metal convex window hoods are visible on the southern elevation.

Several mature plantings are present on site.

STATEMENT OF SIGNIFICANCE

Criterion:

Description:

1. Historical

Helidon Butcher's Shop and Residence (former) demonstrate the historical development of Helidon in the early 20th century as an early commercial store and associated residence.

2. Scientific

Does not currently threshold.

3. Typological

Helidon Butcher's Shop and Residence (former) are intact and representative examples of an early 20th century timber commercial building and associated residence.

4. Aesthetic

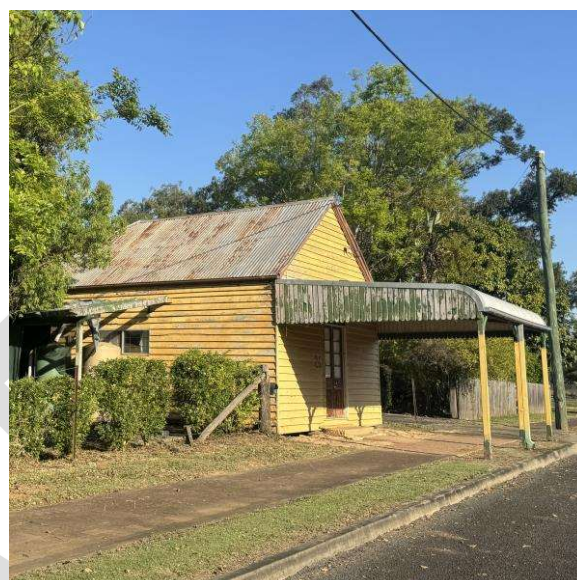
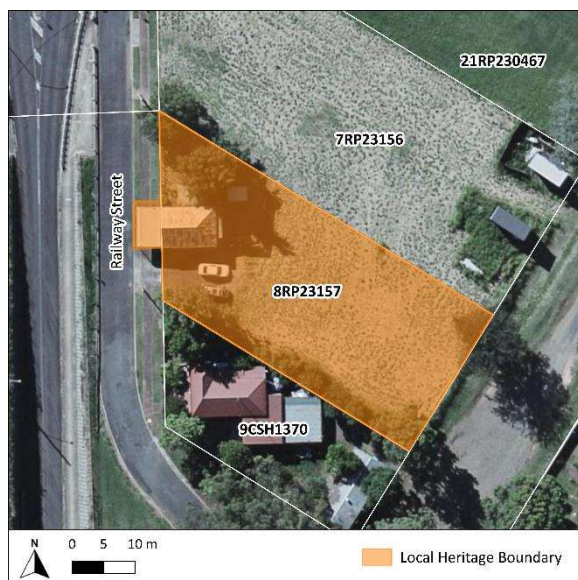
Helidon Butcher's Shop and Residence (former) hold aesthetic significance as they form a positive contribution to the Railway Street streetscape and Helidon's historical commercial precinct.

5. Social and Spiritual	Helidon Butcher's Shop and Residence (former) hold social significance for the local community as a commercial space that was in use for over ninety years.
Statement summary:	
<p>Helidon Butcher's Shop and Residence (former) demonstrate the historical development of Helidon in the early 20th century as an early commercial store. They are intact and representative examples of an early 20th century timber commercial building and late 19th to early 20th century associated residence. They hold aesthetic significance as they form a positive contribution to the Railway Street streetscape and Helidon's historical commercial precinct. The shop holds social significance for the local community as a commercial space that was in use for over ninety years.</p>	
REFERENCES	
<ol style="list-style-type: none"> 1. Queensland Titles Registry. (1892-1893). <i>Certificate of Title: No. 227057</i>. Register Book Vol. 843, Folio 100. 2. Helidon Items. (1909, August 30). <i>The Queensland Times</i>, p. 4. Retrieved from http://nla.gov.au/nla.news-article112058637. 3. Hollander, Wright & Co. (1888). <i>The Queensland Post Office Directory</i>. Hollander, Wright & Co. Brisbane. 4. <i>The Queensland Post Office Directory</i>. (1892). Weatherill & Co. (Publishers). Brisbane; Death of an Old Resident. (1895, June 29). <i>Darling Downs Gazette</i>, p. 4. Retrieved from http://nla.gov.au/nla.news-article171377574. 5. Wise's Directories. (1896-1897). <i>The Queensland Official Directory</i>. H. Wise & Co. Brisbane; Through the Laidley, Gatton, and Helidon Districts. (1898, September 15). <i>Queensland Times, Ipswich Herald, and General Advertiser</i>, p. 7. Retrieved from http://nla.gov.au/nla.news-article123600137. 6. Death of an Old Resident. (1895, June 29). <i>Darling Downs Gazette</i>, p. 4. Retrieved from http://nla.gov.au/nla.news-article171377574. 7. Helidon News. (1909, July 9). <i>The Queensland Times</i>, p. 3. Retrieved from http://nla.gov.au/nla.news-article112057575; Helidon Items. (1909, August 30). <i>The Queensland Times</i>, p. 4. Retrieved from http://nla.gov.au/nla.news-article112058637. 8. Fires. (1916, August 23). <i>The Brisbane Courier</i>, p. 9. Retrieved from http://nla.gov.au/nla.news-article20140276. 9. Helidon Meatless. (1919, January 15). <i>The Telegraph</i>, p. 2. Retrieved from http://nla.gov.au/nla.news-article176309769. 10. Ibid; State Meat. (1919, January 16). <i>The Daily Mail</i>, p. 8. Retrieved from http://nla.gov.au/nla.news-article220550040. 11. District News. (1928, May 2). <i>The Toowoomba Chronicle and Darling Downs Gazette</i>, p. 11. Retrieved from http://nla.gov.au/nla.news-article254003565. 12. Helidon. (1935, February 20). <i>The Queensland Times</i>, p. 12. Retrieved from http://nla.gov.au/nla.news-article119448945. 13. Buchanan Architects. (2000). <i>Gatton Shire Cultural Heritage Study</i>. Gatton Shire Council. 	

LOCKYER VALLEY LOCAL HERITAGE STUDY



PLACE NAME	26 Railway Street, Helidon (Shop)		
OTHER NAMES	N/A		
PLACE ID NUMBER	LHP0408		
ADDRESS	26 Railway Street, Helidon	Lot on Plan or GPS Coordinates	8RP23157; Road Reserve



HISTORICAL CONTEXT

Historical period:

Construction: c. Federation 1890 – 1914
Relocation: Interwar (1919 – 1939) – Postwar (1945 – 1960)

History:

While its original use is unknown, it is believed that the shop at 26 Railway Street, Helidon was previously a saddlery. The land was subdivided, and this portion was sold to Michael Cuskelly in 1894¹. The store, however, only appears on the site in aerial imagery sometime between 1933-1951², at which time William Richard Gregson, Saddler³, held the Certificate of Title for the land⁴. It is therefore likely that the store was relocated to the current site in the early 20th century, however, this is not confirmed.

It is believed to currently be under private ownership.

Historical themes:

3. Developing secondary and tertiary industries.
3.8. Marketing, retailing, and service industries.

PHYSICAL DESCRIPTION

26 Railway Street, Helidon is a symmetrical timber structure clad in weatherboard with a steeply pitched open gable roof clad in corrugated iron, consistent with commercial buildings built in the late 19th century. The front façade (eastern elevation) features a corrugated iron bullnose awning with vertical timber battened sides extending over the entire footpath, supported by timber posts with decorative timber brackets. The entrance consists of low-waist timber French doors with glass

panels, accessed via a single masonry step. The side elevations feature fixed pane windows. A timber pergola is attached to the northern elevation.

STATEMENT OF SIGNIFICANCE

Criterion:	Description:
1. Historical	Does not currently threshold.
2. Scientific	Does not currently threshold.
3. Typological	26 Railway Street, Helidon is an intact example of an early timber commercial building from the late 19 th or early 20 th century.
4. Aesthetic	26 Railway Street, Helidon contributes positively to the Railway Street streetscape and Helidon's historical commercial precinct.
5. Social and Spiritual	Does not currently threshold.

Statement summary:

26 Railway Street, Helidon is an intact example of an early timber commercial building from the late 19th or early 20th century. It contributes positively to the Railway Street streetscape and Helidon's historical commercial precinct.

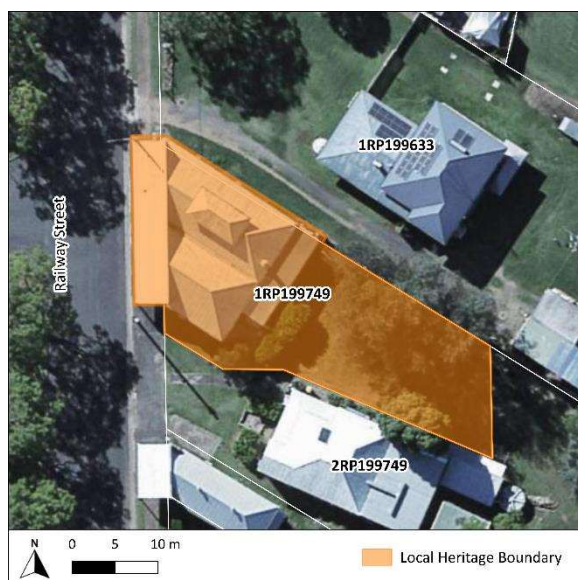
REFERENCES

1. Queensland Titles Registry. (1866-1900). *A. Land Purchase: No. 14790*. Register Book Vol. 54, Folio 94.
2. QImagery. 1933 & 1951 Aerial Imagery. Retrieved from <https://qimagery.information.qld.gov.au/>.
3. Wise's Directories. (1928-1929). *Queensland Post Office Directory*. H. Wise & Co. Ltd. Brisbane.
4. Queensland Titles Registry. (1894-1990). *Certificate of Title: No. 4355161*. Register Book Vol. 878, Folio 234.

LOCKYER VALLEY LOCAL HERITAGE STUDY



PLACE NAME	14 Railway Street, Helidon (Shop)		
OTHER NAMES	N/A		
PLACE ID NUMBER	LHP0409		
ADDRESS	14 Railway Street, Helidon	Lot on Plan or GPS Coordinates	1RP199749; Road Reserve



HISTORICAL CONTEXT

Historical period: c. Federation (1890 – 1914) – Interwar (1919 – 1939)

History:

The historical use and construction date of the shop at 14 Railway Street, Helidon is unclear, however, it appears to have been constructed in the late 19th or early 20th century, certainly appearing in aerial imagery from 1933¹. Patrick Lynch originally purchased land extending almost the entirety of this eastern portion of Patrick Street in 1866. The land was later subdivided, with this portion being sold to David Vallance in 1892² prior to being further subdivided later.

Between 1988-1992, an extension was constructed to the northern side of the awning at the rear of the building³. Some repairs appear to have been undertaken between 2023-2025 with the timber boards of the front parapet either replaced or concealed by corrugated iron⁴.

In more recent times, the shop was known as the 'Helidon Shopping Centre' until at least 2008 and now houses a retail shop and health centre⁵.

Historical themes: 3. Developing secondary and tertiary industries.
3.8. Marketing, retailing, and service industries.

PHYSICAL DESCRIPTION

14 Railway Street, Helidon (Shop) is a low set timber structure clad in chamferboard on the front façade (western elevation) and weatherboard on the remaining elevations. The corrugated iron M-shaped hipped roof includes a roof lantern along the ridgeline on the northern side. It features four continuous sets of six-pane windows, likely to allow natural light and ventilation, with its sides clad in corrugated iron.

The front façade features a rectangular parapet clad in contemporary corrugated iron. A corrugated iron bullnose awning with enclosed curved vertical timber sides extends across the footpath. The awning features a curved vertical timber frieze extending between the stop chamfered timber posts. Contemporary glass sliding doors accessed via a single masonry step are present, flanked by sets of continuous windows. The northern and southern elevations feature small highset windows and contemporary air conditioning units. A skillion roof extension is present to the rear.

Based on aerial imagery, the mature trees on site appear to be post-1980s.

STATEMENT OF SIGNIFICANCE

Criterion:	Description:
1. Historical	14 Railway Street, Helidon demonstrates the historical development of Helidon in the late 19 th or early 20 th century as an early commercial shop.
2. Scientific	Does not currently threshold.
3. Typological	14 Railway Street, Helidon retains principal characteristics of an early timber commercial building.
4. Aesthetic	14 Railway Street, Helidon contributes positively to the Railway Street streetscape and Helidon's historical commercial precinct.
5. Social and Spiritual	Does not currently threshold.

Statement summary:

14 Railway Street, Helidon demonstrates the historical development of Helidon in the late 19th or early 20th century as an early commercial shop. It retains early principal characteristics of an early timber commercial building. It contributes positively to the Railway Street streetscape and Helidon's historical commercial precinct.

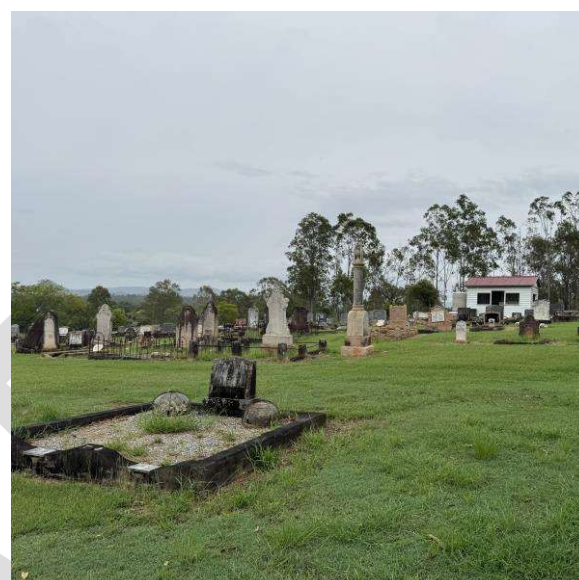
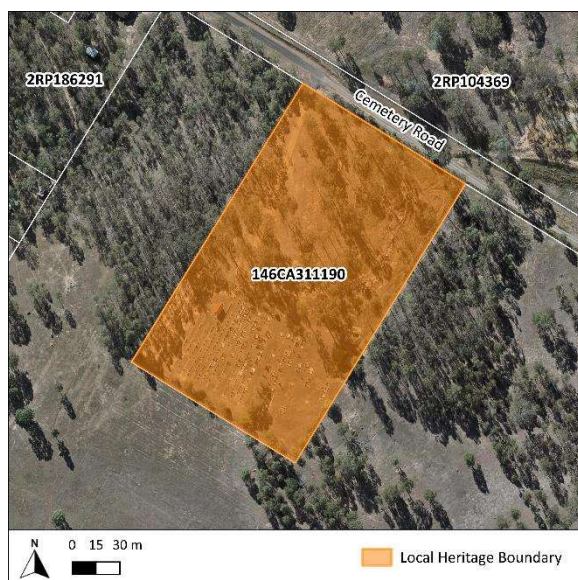
REFERENCES

1. QImagery. 1933 Aerial Imagery. Retrieved from <https://qimagery.information.qld.gov.au/>.
2. Queensland Titles Registry. (1866-1900). *Deed of Grant: 14790*. Register Book Vol. 94, Folio 54.
3. QImagery. 1988 & 1992 Aerial Imagery. Retrieved from <https://qimagery.information.qld.gov.au/>.
4. Google. 2007-2023 Street View. Retrieved from <https://www.google.com/maps/>.
5. Ibid.

LOCKYER VALLEY LOCAL HERITAGE STUDY



PLACE NAME	Helidon General Cemetery		
OTHER NAMES	N/A		
PLACE ID NUMBER	LHP0410		
ADDRESS	Cemetery Helidon	Road, Lot on Plan or GPS Coordinates	146CA311190



HISTORICAL CONTEXT

Historical period: Federation 1890 – 1914

History:

The Helidon General Cemetery dates to at least the 1890s, as evidenced by memorials present on the site, however there are multiple unmarked graves that may date to an earlier period. Early references to the cemetery appear in local newspapers by at least c. 1894¹. A shelter was constructed on site sometime between 1933-1951². The cemetery remains in use today.

Historical themes:

- 6. Building settlements, towns, cities, and dwellings.
 - 6.2. Planning and forming settlements.
- 8. Creating social and cultural institutions.
 - 8.1. Worshipping and religious institutions.
 - 8.2. Cultural activities.
 - 8.6. Commemorating significant events.

PHYSICAL DESCRIPTION

The Helidon General Cemetery is situated on a grassed lot bound by a metal fence, set back from the road. A single unmarked grave is present at the road entrance, and a dirt track then leads to the main cemetery entrance approximately 130 metres southwest which is marked by short brick pillars supporting metal gates.

On the northwestern side, near the entrance, is a timber shelter clad in weatherboard with a corrugated iron gable roof. An open doorway on the southeastern elevation is accessed via masonry steps and is flanked by two window openings. Additional window openings are present on the northeastern and southwestern elevations. Internally, timber bench seating lines the walls. A contemporary water tank is present along the southwestern elevation. A concrete block is present underneath the southwest corner of the structure with the words "Neville Lugge 1928 to 1929" inscribed. There is a headstone present within the cemetery with this name and date, suggesting this was maybe an earlier headstone that was replaced.

The historical graves follow a relatively a uniform layout, condensed within the central portion of the cemetery and dispersing out towards the east, while contemporary graves occupy the remaining areas. Headstones and monuments vary, including tablet-style, footstone, and pillar designs, several of which feature iron fencing.

STATEMENT OF SIGNIFICANCE

Criterion:	Description:
1. Historical	The Helidon General Cemetery holds historical significance as it dates to at least the 1890s and has been in use for over a century, reflecting local burial practices and the growth and development of Helidon.
2. Scientific	Does not currently threshold.
3. Typological	As a rural cemetery, the Helidon General Cemetery is representative of late 19 th and 20 th century burial practices in rural Queensland. It reflects typical cemetery design and functions of its time.
4. Aesthetic	Does not currently threshold.
5. Social and Spiritual	The Helidon General Cemetery holds strong social and spiritual significance to the local community as a place of remembrance and respect for the deceased.

Statement summary:

The Helidon General Cemetery is significant for its association with the historical development of Helidon, dating to at least the 1890s. It reflects the burial practices of the local community in the late 19th century and has remained an important site for remembrance over more than a century. The cemetery holds social and spiritual significance as a place of ongoing cultural and emotional connection for the community, serving as a resting place for generations of residents and continuing in use to the present day.

REFERENCES

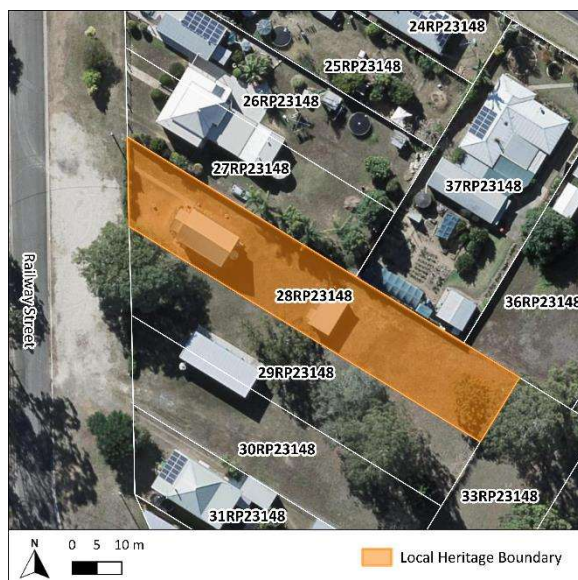
1. Local and General News. (1894, April 17). *The Toowoomba Chronicle and Darling Downs General Advisor*, p. 2. Retrieved from <http://nla.gov.au/nla.news-article218996254>.
2. QImagery. 1933 & 1951 Aerial Imagery. Retrieved from <https://qimagery.information.qld.gov.au/>.

DRAFT

LOCKYER VALLEY LOCAL HERITAGE STUDY



PLACE NAME	Helidon St Paul's Lutheran Church (former)		
OTHER NAMES	Ye Old Bush Church, Basilica of St David		
PLACE ID NUMBER	LHP0411		
ADDRESS	60 Railway Street, Helidon	Lot on Plan or GPS Coordinates	28RP23148



HISTORICAL CONTEXT

Historical Period: c. World War II (1939 – 1945) – Postwar (1945 – 1960)

History:

The Helidon St Paul's Lutheran Church appears on aerial imagery between 1933 and 1951¹. It was likely either newly constructed or relocated and repurposed from another church, after the former 1922 Lutheran Church² was destroyed by a cyclone in January 1940³. As no structure is visible on the site in the 1933 aerial imagery⁴, it is presumed that new land was selected for the current church.

In December 1940, Carl Jahnke, August Gierke, and Johann Trost were listed as trustees for the site⁵. The church was still in use in 1954, as it is referenced as hosting a wedding that year⁶. In 1974, ownership was transferred to the Lutheran Church of Australia Queensland District⁷, though it is unclear how long the Lutheran community continued to use it after this transfer.

In the 2000s, the property was reportedly purchased by the Magnificat Meal Movement (MMM) under the "Church of the Commonwealth of Caledonia Australis" and renamed the building the "Basilica of St David"⁸.

It is unclear if the building is still in use by the MMM, though a sign reading "Ye Old Bush Church, Basilica of St David" remains on site.

Historical themes:

- 8. Creating social and cultural institutions.
 - 8.1. Worshipping and religious institutions.
 - 8.2. Cultural activities.
 - 8.6. Commemorating significant events.

PHYSICAL DESCRIPTION

The Helidon St Paul's Lutheran Church (former) is a typical example of a rural timber church. It is a low set structure on timber stumps, clad in weatherboard, with a steeply pitched gable roof clad in corrugated iron. The front façade (northwestern elevation) features a central porch with a patterned glass casement window, while lancet windows are present on the northeastern and southwestern elevations. Additional contemporary structures are present on the site, and the front façade is largely concealed by contemporary plantings and arched timber gates. Based on aerial imagery, plantings on the site are post-1980s.

STATEMENT OF SIGNIFICANCE

Criterion:	Description:
1. Historical	The Helidon St Paul's Lutheran Church (former) demonstrates the historical pattern of Lutheranism in Helidon and demonstrates the development of religious activities in the area during this period.
2. Scientific	Does not currently threshold.
3. Typological	The Helidon St Paul's Lutheran Church (former) is a good example of a typical early 20 th century rural timber church, with features such as a steeply pitched gable roof, weatherboard, and central porch, demonstrating common design principles of small rural churches of this era.
4. Aesthetic	Does not currently threshold.
5. Social and Spiritual	The Helidon St Paul's Lutheran Church (former) holds social and spiritual significance for the local community as a site of early Lutheranism.

Statement summary:

The Helidon St Paul's Lutheran Church (former) demonstrates the historical pattern of Lutheranism in Helidon and demonstrates the development of religious activities in the area during this period. It is a good example of a typical early 20th century rural timber church, with features such as a steeply pitched gable roof, weatherboard, and central porch, demonstrating common design principles of small rural churches of this era. It holds social and spiritual significance for the local community as a site of early Lutheranism.

REFERENCES

1. QImagery. 1933 & 1951 Aerial Imagery. Retrieved from <https://qimagery.information.qld.gov.au/>.
2. Helidon. (1922, November 25). *The Queensland Times*, p. 7. Retrieved from <http://nla.gov.au/nla.news-article111133630>.
3. Gale Hits Helidon. (1940, January 27). *The Courier Mail*, p. 3. Retrieved from <http://nla.gov.au/nla.news-article40873613>.
4. QImagery. 1933 Aerial Imagery. Retrieved from <https://qimagery.information.qld.gov.au/>.
5. Queensland Titles Registry. (1940-1986). *Certificate of Title: No. 409538*. Register Book Vol. 2134, Folio 28.

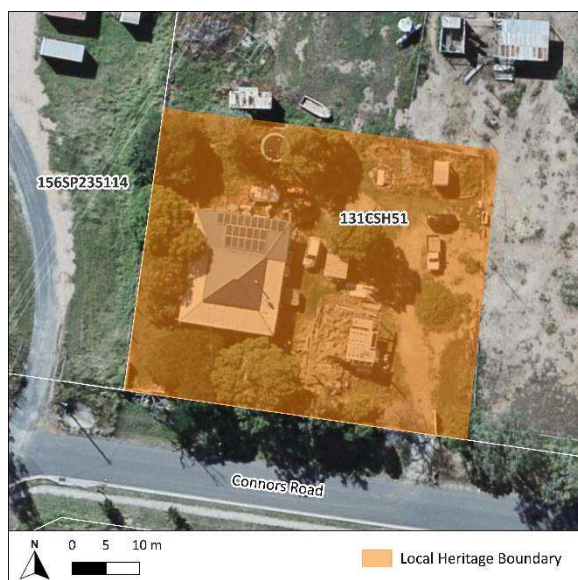
6. Family Notices. (1954, October 9). *The Queensland Times*, p. 10. Retrieved from <http://nla.gov.au/nla.news-article118436063>.
7. Queensland Titles Registry. (1940-1986). *Certificate of Title: No. 409538*. Register Book Vol. 2134, Folio 28.
8. Garde, M. (2006). *Spirituality and Cultism: A Case Study of a New Religious Movement – The Magnificat Meal Movement* [Dissertation, Milltown Institute of Theology and Philosophy]. Retrieved from <https://dialogueireland.wordpress.com/2009/01/20/the-magnificat-meal-movement/>.

DRAFT

LOCKYER VALLEY LOCAL HERITAGE STUDY



PLACE NAME	552 Connors Road, Helidon (Residence)		
OTHER NAMES	N/A		
PLACE ID NUMBER	LHP0412		
ADDRESS	552 Connors Road, Helidon	Lot on Plan or GPS Coordinates	131CSH51



HISTORICAL CONTEXT

Historical period: c. Federation 1890 – 1914

History:

The land at 552 Connors Road, Helidon, was purchased by Amos Bateman in 1902¹, with the residence likely built soon after. Amos, who was notably elected president of the Helidon Scrub Farmers' Progress Association multiple times², previously owned Fairview Farm in the district, which he sold in 1909. At that time, he was listed as residing on Station Street³. Given its location at the end of Station Street and as the only property along present-day Connors Road in 1933 aerial imagery⁴, it is likely that this road was formerly part of Station Street.

The residence features a distinctive sandstone fence, likely sourced from the local Helidon quarries. While a front fence is visible in 1933 aerial imagery⁵, it is unclear if it is the same one. The property remained in the Bateman family until 1959⁶. Between 1982 and 1988, the residence appears to have undergone renovations with the original verandah being modified and extended into a U-shape, with a possible rear extension⁷.

The residence is currently under private ownership.

Historical themes:

6. Building, settlements, towns, cities and dwellings.
6.4. Dwellings.

PHYSICAL DESCRIPTION

552 Connors Road, Helidon (Residence) is a low set timber structure with a corrugated iron pyramid roof. The front façade (southern elevation) features single skin VJ boards with exposed studs and cross bracing with a central timber door with fanlight. The western and eastern elevations are clad in weatherboard or chamferboard.

A U-shaped verandah with a pencil ribbed standing seam skillion roof is a 1980s modification to the original front verandah. It is supported by timber posts with brackets and bound by a timber dowel balustrade. It is unclear if any of the timber posts are retained from the original verandah. Leading to the verandah are a set of stone steps. Surrounding the residence, now supporting the verandah, is a lowset stacked sandstone wall. An extension is present to the northern elevation. The front façade is enclosed by a unique stacked sandstone fence with pilasters surmounted by ornate stone urns. The centre features a three-rail dowel timber access gate.

Mature plantings are present on site.

STATEMENT OF SIGNIFICANCE

Criterion:	Description:
1. Historical	552 Connors Road, Helidon (Residence) demonstrates the historical development of Helidon in the early 20 th century as an early residence during a period of growth in the district.
2. Scientific	Does not currently threshold.
3. Typological	552 Connors Road, Helidon (residence) retains principal characteristics of an early 20 th century residence, with an uncommon locally sourced sandstone fence.
4. Aesthetic	Does not currently threshold.
5. Social and Spiritual	Does not currently threshold.

Statement summary:

552 Connors Road, Helidon (Residence) demonstrates the historical development of Helidon in the early 20th century as an early residence during a period of growth in the district. It retains principal characteristics of an early 20th century residence, with an uncommon locally sourced sandstone fence.

REFERENCES

1. Queensland Titles Registry. (1902-1990). Deed of Grant: No. 89167. Register Book Vol. 999, Folio 177.
2. Helidon Scrub Farmers' Progress Association. (1899, July 1). *Queensland Times, Ipswich Herald, and General Advertiser*, p. 4. Retrieved from <http://nla.gov.au/nla.news-article123282716>; General News Items. (1904, October 6). *Queensland Times, Ipswich Herald, and General Advertiser*, p. 11. Retrieved from <http://nla.gov.au/nla.news-article124406761>.
3. Tarampa Shire Council. (1909, March 25). *The Queensland Times*, p. 6. Retrieved from <http://nla.gov.au/nla.news-article111615532>; Commonwealth of Australia. (1909). *Electoral Roll, State of Queensland, Division of Darling Downs, Roll of Electors for the Subdivision of Helidon*. Retrieved from <https://www.ancestry.com.au/search/collections/1207/>.

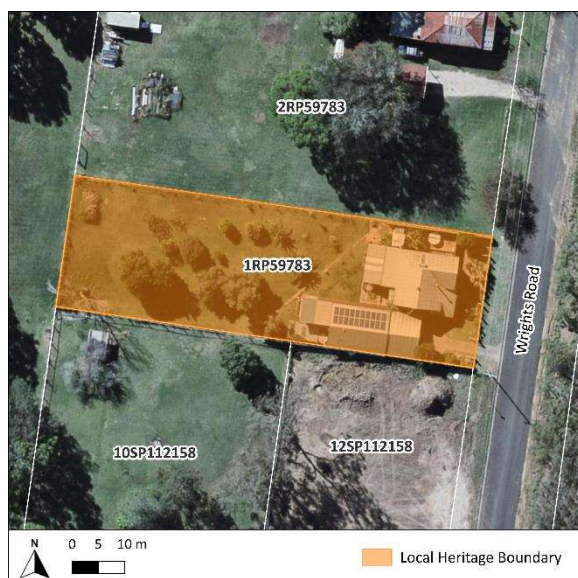
4. QImagery. 1933 Aerial Imagery. Retrieved from <https://qimagery.information.qld.gov.au/>.
5. Ibid.
6. Queensland Titles Registry. (1902-1990). Deed of Grant: No. 89167. Register Book Vol. 999, Folio 177.
7. QImagery. 1982 and 1988 Aerial Imagery. Retrieved from <https://qimagery.information.qld.gov.au/>

DRAFT

LOCKYER VALLEY LOCAL HERITAGE STUDY



PLACE NAME	Wright Residence		
OTHER NAMES	N/A		
PLACE ID NUMBER	LHP0413		
ADDRESS	18 Wrights Road, Helidon	Lot on Plan or GPS Coordinates	1RP59783



HISTORICAL CONTEXT

Historical Period: c. Interwar 1919 – 1939

History:

The Helidon Freestone Quarry was founded by Thomas Wright in 1895. By 1928, his brother, William Wright, was manager of the quarry¹ and subsequently took over ownership in 1929². William Wright purchased the land upon which the Wright Residence sits in 1923³. There are early mentions in 1922, and again in 1926, that the Helidon Freestone Quarry were going to construct a sandstone residence for the quarry manager (presumably William)⁴. However, based on aerial imagery, it appears that the residence was not constructed until after 1933⁵. A Bill of Mortgage was produced in 1936, which may coincide with the residence's construction⁶. The residence remained in the Wright family until at least the 1960s-1970s⁷.

Sandstone from the Wright's quarries have been largely used across Queensland, including the State Government Insurance Office, the Government Printing Office, the Memorial Library at the Brisbane Grammar School⁸, and some of which was used for the University of Queensland⁹.

The residence is currently under private ownership.

Historical themes:

- 2. Exploiting, utilising, and transforming the land.
 - 2.2. Exploiting natural resources.
- 6. Building, settlement, towns, cities and dwellings.
 - 6.4 Dwellings.

PHYSICAL DESCRIPTION

The Wright Residence is a rare example of an early 20th century asymmetrical bungalow constructed of local sandstone. It features a corrugated iron short ridge roof with a street-facing (eastern) gable and southern gable which feature fibro-cement (FC) sheeting, timber battening, and dentils on their gable ends. The corrugated iron hip roof front verandah is supported by pillars and bound by a balustrade, all of which are sandstone, and is accessed via steps. Sandstone fence posts are present at the front of the property, connected via chain link fencing.

Based on aerial imagery, most plantings on the site appear to be post-1980s.

STATEMENT OF SIGNIFICANCE

Criterion:	Description:
1. Historical	The Wright Residence demonstrates the historical development of Helidon in the early 20 th century and is closely associated with the Wright family and Helidon Freestone Quarry.
2. Scientific	Does not currently threshold.
3. Typological	The Wright Residence is a rare example of an early 20 th century bungalow constructed entirely of local sandstone.
4. Aesthetic	The Wright Residence holds a high level of design merit and craftsmanship and is a prominent feature in the streetscape.
5. Social and Spiritual	Does not currently threshold.

Statement summary:

The Wright Residence demonstrates the historical development of Helidon in the early 20th century and is closely associated with the Wright family and Helidon Freestone Quarry. It is a rare example of an early 20th century bungalow constructed entirely of local sandstone. It holds a high level of design merit and craftsmanship and is a prominent feature in the streetscape.

REFERENCES

1. Lockyer District. (1928, May 12). *The Queensland Times*, p. 13. Retrieved from <http://nla.gov.au/nla.news-article114197863>.
2. Local and General News. (1929, November 1). *The Toowoomba Chronicle and Darling Downs Gazette*, p. 6. Retrieved from <http://nla.gov.au/nla.news-article254089766>.
3. Queensland Titles Registry. (1901-1944). *Deed of Grant: No. 88848*. Register Book Vol. 995, Folio 108.
4. News from Downs and Western Centres. (1922, January 11). *The Toowoomba Chronicle and Darling Downs Gazette*, p. 9. Retrieved from <http://nla.gov.au/nla.news-article253835919>; Helidon. (1926, January 9). *The Brisbane Courier*, p. 9. Retrieved from <http://nla.gov.au/nla.news-article20991910>.
5. QImagery. 1933 & 1951 Aerial Imagery. Retrieved from <https://qimagery.information.qld.gov.au/>.
6. Queensland Titles Registry. (1901-1944). *Deed of Grant: No. 88848*. Register Book Vol. 995, Folio 108.

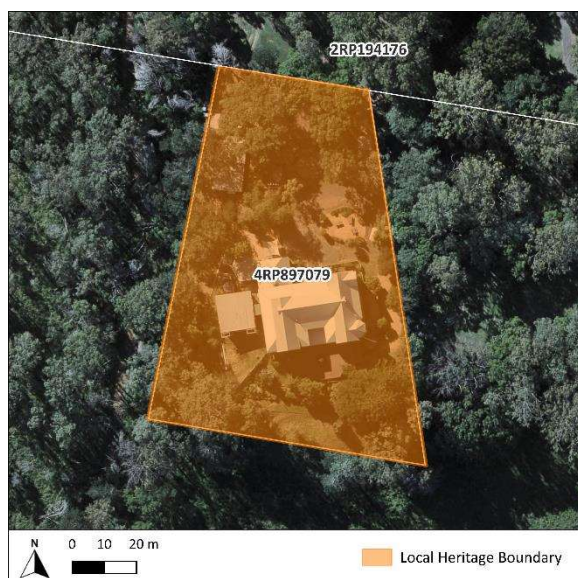
7. Queensland Titles Registry. (1944-1992). *Certificate of Title: No. 429041*. Register Book Vol. 2226, Folio 31.
8. Lockyer District. (1928, May 12). *The Queensland Times*, p. 13. Retrieved from <http://nla.gov.au/nla.news-article114197863>.
9. Helidon State Quarry. (1939, June 9). *Daily Mercury*, p. 6. Retrieved from <http://nla.gov.au/nla.news-article169796455>.

DRAFT

LOCKYER VALLEY LOCAL HERITAGE STUDY



PLACE NAME	Helidon St Joseph's Convent (former)		
OTHER NAMES	Convent of Mercy; Helidon Convent		
PLACE ID NUMBER	LHP0414		
ADDRESS	37 Gunn Street, Helidon	Lot on Plan or GPS Coordinates	4RP897079



HISTORICAL CONTEXT

Historical period: World War I 1914 – 1918

History:

Catholicism was present in Helidon by 1866 with the erection of St Andrew's Catholic Church¹. An associated Catholic School was in operation by 1871 and was reportedly taken over by the Sisters of Joseph in 1874, with a Convent established that same year. In late-1875, the school closed and was later taken over by the Sisters of Mercy in 1880 who constructed a new school and convent in 1884².

These buildings were deemed inadequate for the work that was being undertaken by the Sisters³. A new Convent School (since relocated within the St Joseph's Catholic Church Complex) was constructed in 1915⁴, followed by the present Convent in 1916, on the same land as the St Joseph's Catholic Church constructed earlier in 1914⁵. Both the Convent and School were designed by Brisbane architect Mr. G. H. M. Addison⁶.

The Convent and School was well-known for its music program⁷. The school is reported to have closed in the 1960s due to a lack of enrolments and the buildings were purchased by the Christian Brothers for use as a Novitiate⁸. Between 1992-1993, the school was relocated approximately 90 metres east to the St Joseph's Catholic Church Complex⁹. The Convent was later purchased in the 1990s by the Magnificat Meal Movement (MMM).

It is unclear whether the MMM still retain ownership of the Helidon St Joseph's Convent (former).

Historical themes:

- 8. Creating social and cultural institutions.
 - 8.1. Worshipping and religious institutions.
 - 8.2. Cultural activities.

	9. Educating Queenslanders. 9.1. Primary schooling.
PHYSICAL DESCRIPTION	
<p>The Helidon St Joseph's Convent (former) appears to retain its early general layout based on 1933 aerial imagery. It is a two-storey timber structure clad in chamferboard, featuring multiple gable ends with decorative timber battening. Whilst many windows and doors have been replaced with varying styles, several early window hoods and sash windows remain. The first-level verandahs include a mix of timber slat and weatherboard balustrades, with some sections enclosed using timber latticework. Various portions of the building have been enclosed or altered with fibro-cement (FC) sheeting, and several contemporary extensions are also present. Several mature plantings are on site.</p>	
STATEMENT OF SIGNIFICANCE	
Criterion:	Description:
1. Historical	The Helidon St Joseph's Convent (former) demonstrates the evolution of Catholicism and Catholic education in Helidon in the early 20 th century.
2. Scientific	Does not currently threshold.
3. Typological	Does not currently threshold.
4. Aesthetic	Does not currently threshold.
5. Social and Spiritual	The Helidon St Joseph's Convent (former) holds social and spiritual significance for the local community as a site of early Catholicism.
Statement summary:	
<p>The Helidon St Joseph's Convent (former) demonstrates the evolution of Catholicism and Catholic education by the Sisters of Mercy in Helidon from the early 20th century. The place holds social and spiritual significance for the local community as a site of early Catholicism.</p>	
REFERENCES	
<ol style="list-style-type: none"> 1. Religious. (1866, December 20). <i>Queensland Times, Ipswich Herald, and General Advertiser</i>, p. 5. Retrieved from http://nla.gov.au/nla.news-article123331646. 2. Bennett, H. (1999). <i>Gatton Shire: Thematic Historical Overview</i>. Cultural Heritage Branch, Queensland Environmental Protection Agency. 3. Helidon Convent. (1916, May 23). <i>Darling Downs Gazette</i>, p. 4. Retrieved from http://nla.gov.au/nla.news-article187311362. 4. New School Opened. (1915, August 2). <i>The Brisbane Courier</i>, p. 5. Retrieved from http://nla.gov.au/nla.news-article20050637. 5. Helidon's New Convent Blessed and Opened. (1916, May 25). <i>The Catholic Advocate</i>, p. 15. Retrieved from http://nla.gov.au/nla.news-article258326290. 6. New School Opened. (1915, August 2). <i>The Brisbane Courier</i>, p. 5. Retrieved from http://nla.gov.au/nla.news-article20050637; Helidon Convent. (1916, May 23). <i>Darling Downs Gazette</i>, p. 4. Retrieved from http://nla.gov.au/nla.news-article187311362. 	

7. Helidon Convent. (1923, January 4). *The Catholic Advocate*, p. 19. Retrieved from <http://nla.gov.au/nla.news-article258144918>; Helidon Convent. (1930, March 13). *The Catholic Advocate*, p. 20. Retrieved from <http://nla.gov.au/nla.news-article261283995>.
8. Bennett, H. (1999). *Gatton Shire: Thematic Historical Overview*. Cultural Heritage Branch, Queensland Environmental Protection Agency.
9. QImagery. 1992 & 1993 Aerial Imagery. Retrieved from <https://qimagery.information.qld.gov.au/>.

DRAFT