



# Lockyer Valley Local Heritage Study

Grantham Citations

Draft for Consultation

July 2025

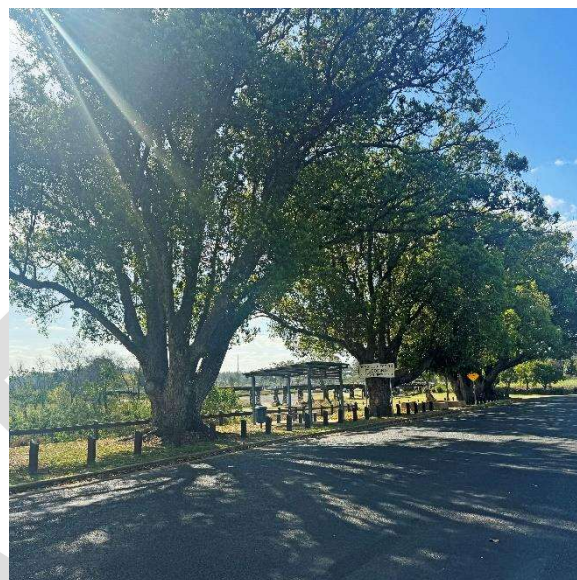
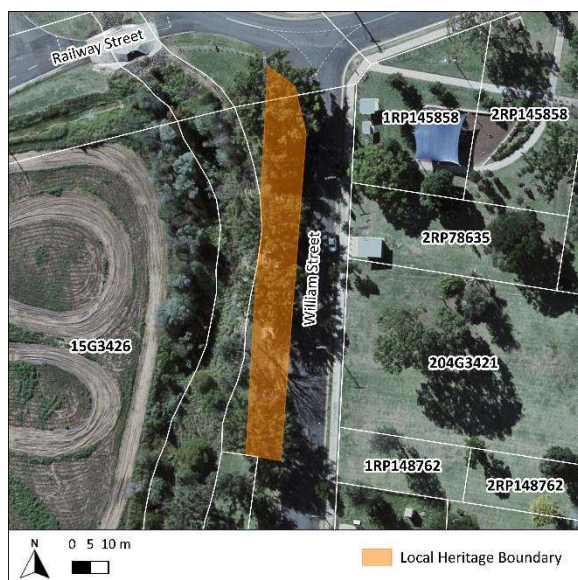
## CONTENTS

LHP0301	William Street Camphor Laurel Trees	William Street	Grantham	Road Reserve
LHP0302	Mc Garva's Store (former)	6 William Street	Grantham	Lot 1 RP91609; Road Reserve
LHP0303	Singh's Grantham General Store (former)	2 Harris Street	Grantham	Lot 10 RP25736; Road Reserve
LHP0304	Grantham State School and Residence	15 Victor Street	Grantham	Lot 40 SP154108
LHP0305	Grantham Butter Factory (former)	6 Victor Street	Grantham	Lot 1 RP189736

# LOCKYER VALLEY LOCAL HERITAGE STUDY



PLACE NAME	William Street Camphor Laurel Trees		
OTHER NAMES	N/A		
PLACE ID NUMBER	LHP0301		
ADDRESS	Along William Street, Grantham	Lot on Plan or GPS Coordinates	William Street Road reserve



## HISTORICAL CONTEXT

**Historical period:** Interwar 1919 – 1939

### History:

In August 1927, the local council decided to plant six trees each in Grantham, Gatton, and Helidon. The council would provide the trees and the tree guards, but it was the local progress associations responsibilities to dig the holes, plant, and care for the trees<sup>1</sup>. By November, Mr. A. L. Guilford, Mr. J. R. Phillips, Mr. N. R. McCosker, and Mr. R. Risson (of the Grantham Progress Association) had chosen Camphor Laurel trees as the species that would line the main street of Grantham<sup>2</sup>. By December 1927, the trees had been planted<sup>3</sup>.

**Historical themes:** 2. Exploiting, utilising, and transforming the land.  
2.6. Managing flora and fauna.

## PHYSICAL DESCRIPTION

Six Camphor Laurel trees line the western side of William Street, Grantham along a flat grassed area. Interspersed between the trees are contemporary shelters, signs, and a 2011 flood memorial stone and plaque. The fifth tree from the north has been largely cut with only a few metres remaining.

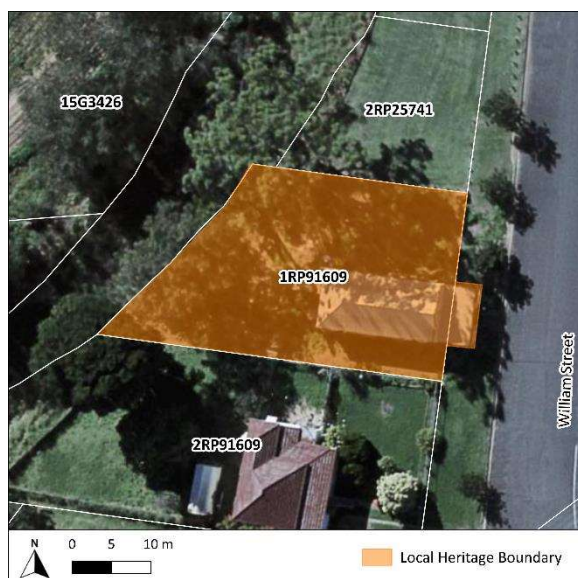
STATEMENT OF SIGNIFICANCE	
Criterion:	Description:
1. Historical	The William Street Camphor Laurel Trees are historically significant as a 1927 planting regime, conducted by the local community that was part of a local council program involving six trees to be planted in the main streets of Grantham, Gatton, and Helidon.
2. Scientific	Does not currently threshold.
3. Typological	Does not currently threshold.
4. Aesthetic	The William Street Camphor Laurel Trees are a prominent landscape feature of the William Street streetscape.
5. Social and Spiritual	The William Street Camphor Laurel Trees are important to the local Grantham community as a marker of early community aspirations in Grantham as trees that were planted by the local community.
<b>Statement summary:</b>	
The William Street Camphor Laurel Trees are historically significant as a 1927 planting regime conducted by the local community that was part of a local council program involving six trees to be planted in the main streets of Grantham, Gatton, and Helidon. They are a prominent landscape feature of the William Street streetscape. They are important to the local Grantham community as a marker of community aspirations in Grantham as the trees were planted by the local community.	
REFERENCES	
<ol style="list-style-type: none"> <li>1. Local Government. (1927, August 3). <i>The Toowoomba Chronicle and Darling Downs Gazette</i>, p. 12. Retrieved from <a href="http://nla.gov.au/nla.news-article253976791">http://nla.gov.au/nla.news-article253976791</a>.</li> <li>2. Grantham. (1927, November 14). <i>The Queensland Times</i>, p. 9. Retrieved from <a href="http://nla.gov.au/nla.news-article117272128">http://nla.gov.au/nla.news-article117272128</a>.</li> <li>3. Local Government. (1927, December 7). <i>The Toowoomba Chronicle and Darling Downs Gazette</i>, p. 10. Retrieved from <a href="http://nla.gov.au/nla.news-article254008054">http://nla.gov.au/nla.news-article254008054</a>; Grantham. (1928, January 11). <i>The Queensland Times</i>, p. 4. Retrieved from <a href="http://nla.gov.au/nla.news-article124569328">http://nla.gov.au/nla.news-article124569328</a>.</li> </ol>	



# LOCKYER VALLEY LOCAL HERITAGE STUDY



<b>PLACE NAME</b>	McGarva's Store (former)		
<b>OTHER NAMES</b>	Grantham Meat Mart; Foyle's Restoration		
<b>PLACE ID NUMBER</b>	LHP0302		
<b>ADDRESS</b>	6 William Street, Grantham	<b>Lot on Plan or GPS Coordinates</b>	1RP91609; Road Reserve



## HISTORICAL CONTEXT

**Historical period:** Interwar 1919 – 1939

### History:

McGarva's Store (former) was constructed in 1926 and used by brothers J. & G. McGarva to replace their earlier store, which was destroyed by fire that same year. The adjoining property to the south was described as the residence of Mr. and Mrs. J. McGarva<sup>1</sup>. By 1926, the McGarva's had requested council approval to install a petrol pump on the footpath, though the exact date of its erection is unclear<sup>2</sup>. It is said to have later been removed and put into storage after it was no longer in use<sup>3</sup>.

In 1932, the business went into bankruptcy, leading to tenders being invited for the purchase of all stock and fittings<sup>4</sup>. However, references to "McGarva's Store" continued throughout 1930s and 1940s<sup>5</sup>.

At some point, the building was converted into a butcher's shop known as the Grantham Meat Mart<sup>6</sup>. By 2000, it had become Foyle's Restoration, an antique furniture restoration business<sup>7</sup>. The building has had numerous alterations changes over the years, including the addition of cast iron balustrades, removal of verandah brackets, changes to the external wall cladding, and the addition of metal concave window hoods<sup>8</sup>.

The building now appears to be under private ownership and is no longer in commercial use.

### Historical themes:

- 3. Developing secondary and tertiary industries.
- 3.8. Marketing, retailing and service industries.

## PHYSICAL DESCRIPTION

McGarva's Store (former) is a low set symmetrical, rectangular timber structure clad in contemporary corrugated iron and FC sheeting. The corrugated iron hip roof features a front gable end concealed behind an FC sheet parapet with gabled peak. A corrugated iron skillion awning extends over the shopfront with timber fretwork which is supported by timber posts. The simple front balustrade is partially infilled with cast iron panels that were added between 2000-2007.

The front façade (eastern elevation) features large windows and a recessed contemporary entry door. Some timber VJ boards can be seen on the lower portion of the wall under the windows flanking the central door. The northern and southern elevations feature metal convex window hoods added between 2007-2015. A skillion awning extension is present to the rear.

There are mature trees present on site which, based on aerial imagery, are post-1970s plantings.

## STATEMENT OF SIGNIFICANCE

Criterion:	Description:
1. Historical	McGarva's Store (former) demonstrates the historical and commercial development of Grantham during the early 20 <sup>th</sup> century.
2. Scientific	Does not currently threshold.
3. Typological	McGarva's Store (former) retains principal characteristics of an early 20 <sup>th</sup> century timber store building.
4. Aesthetic	Does not currently threshold.
5. Social and Spiritual	Does not currently threshold.

### Statement summary:

McGarva's Store (former) demonstrates the historical and commercial development of Grantham during the early 20<sup>th</sup> century. It retains principal characteristics of an early 20<sup>th</sup> century timber store building.

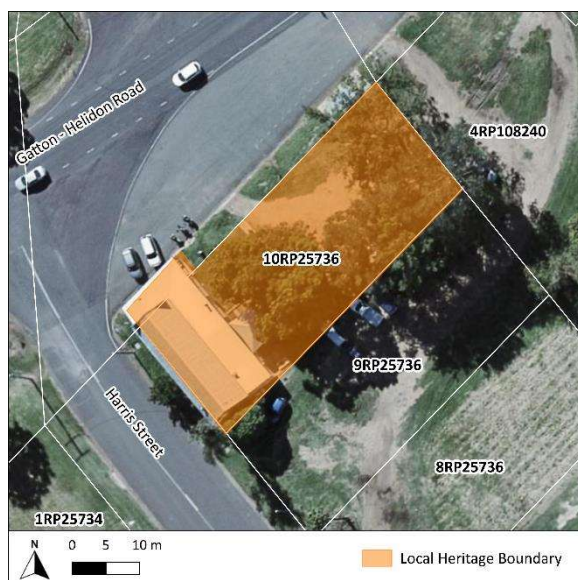
## REFERENCES

1. Lockyer District. (1926, February 23). *The Queensland Times*, p. 11. Retrieved from <http://nla.gov.au/nla.news-article118612745>; Grantham Burglary. (1926, June 25). *The Queensland Times*, p. 4. Retrieved from <http://nla.gov.au/nla.news-article118624600>.
2. Tarampa Council. (1926, September 8). *The Queensland Times*, p. 3. Retrieved from <http://nla.gov.au/nla.news-article118643973>.
3. Buchanan Architects. (2000). *Gatton Shire Cultural Heritage Study*. Gatton Shire Council.
4. Advertising. (1932, March 15). *The Telegraph*, p. 5. Retrieved from <http://nla.gov.au/nla.news-article180052043>.
5. Grantham. (1935, November 25). *The Queensland Times*, p. 12. Retrieved from <http://nla.gov.au/nla.news-article118342265>; £400 in Prices: "Boyangs". (1939, April 16). *The Sunday Mail*, p. 4. Retrieved from <http://nla.gov.au/nla.news-article98229558>; Move for Fire Brigade at Grantham. (1946, November 16). *The Queensland Times*, p. 6. Retrieved from <http://nla.gov.au/nla.news-article118381566>.

6. Queensland Reconstruction Authority. (1926, February 22). *Rebuilding Grantham together: Development Scheme*, p. 6-7. Retrieved from <https://www.qra.qld.gov.au/sites/default/files/2018-10/rebuilding-grantham-full.pdf>.
7. Buchanan Architects. (2000). *Gatton Shire Cultural Heritage Study*. Gatton Shire Council.
8. Google. (2000-2021). *Google Street Imagery*. Retrieved from <https://www.google.com/maps>; Buchanan Architects. (2000). *Gatton Shire Cultural Heritage Study*. Gatton Shire Council.

DRAFT

<b>PLACE NAME</b>	Singh's Grantham General Store (former)		
<b>OTHER NAMES</b>	The Floating Cafe		
<b>PLACE ID NUMBER</b>	LHP0303		
<b>ADDRESS</b>	2 Harris Street, Grantham	<b>Lot on Plan or GPS Coordinates</b>	10RP25736; Road Reserve



## HISTORICAL CONTEXT

**Historical period:** Interwar 1919 – 1939

### History:

Singh's Grantham General Store (former) was constructed in 1926 and owned by Mr. N. Singh<sup>1</sup>. It was described as an up-to-date emporium with an attached refreshment room<sup>2</sup>. In 2000, it was described as operating as an antique shop<sup>3</sup>. During the catastrophic 2011 floods, the structure was torn from its stumps. It was then purchased and restored by Tony Wood and became The Floating Café<sup>4</sup>, which it continues to operate as.

### Historical themes:

- 3. Developing secondary and tertiary industries.
- 3.8. Marketing, retailing and service industries.

## PHYSICAL DESCRIPTION

Singh's Grantham General Store (former) is a low set timber structure on contemporary stumps. The front façade (northwestern elevation) is clad in chamferboard, whilst the remaining elevations are clad in weatherboard. The northwestern elevation of the steeply pitched corrugated iron gable roof is concealed by an FC sheeted parapet with gabled peak. A corrugated iron skillion awning extends over the shopfront and is supported by posts with a horizontal timber board balustrade on enclosed part of the front section. Masonry steps lead from the roadside to the entrance which are flanked by stone retaining wall.



The main shopfront on the northwestern elevation features a recessed entry door accessed via timber steps and is flanked by two large windows. Adjacent to this on the northeastern side is an early extension with a large window and door accessed via timber steps.

The northeastern elevation features windows with corrugated iron skillion window hoods and timber brackets. A contemporary access ramp on this elevation leads to shaded dining area. The southwestern elevation features small highset three-pane windows and contemporary air conditioning units.

Some mature plantings are present on site.

#### STATEMENT OF SIGNIFICANCE

Criterion:	Description:
1. Historical	Singh's Grantham General Store (former) demonstrates the historical and commercial development of Grantham township during the early 20 <sup>th</sup> century.
2. Scientific	Does not currently threshold.
3. Typological	Singh's Grantham General Store (former) is a representative example of an early 20 <sup>th</sup> century timber store building.
4. Aesthetic	Singh's Grantham General Store's (former) prominent position on the corner of Harris Street contributes to the streetscape of Grantham.
5. Social and Spiritual	Singh's Grantham General Store (former) holds social significance for the local community as a commercial space since the 1920s.

#### Statement summary:

Singh's Grantham General Store (former) demonstrates the historical development of Grantham during the early 20<sup>th</sup> century. It is a representative example of an early 20<sup>th</sup> century timber store building and its prominent position on the corner of Harris Street contributes to the streetscape. It holds social significance for the local community as a commercial space since the 1920s.

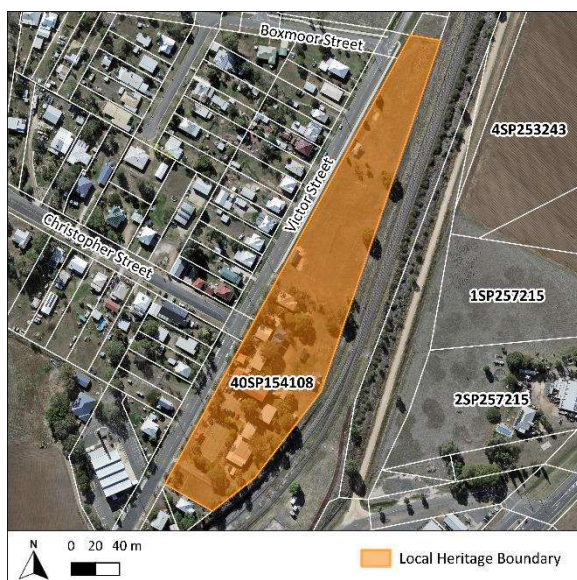
#### REFERENCES

1. Grantham. (1926, May 10). *The Brisbane Courier*, p. 12. Retrieved from <http://nla.gov.au/nla.news-article21037038>.
2. District News. (1927, December 22). *The Toowoomba Chronicle and Darling Downs Gazette*, p. 8. Retrieved from <http://nla.gov.au/nla.news-article254017541>.
3. Buchanan Architects. (2000). *Gatton Shire Cultural Heritage Study*. Gatton Shire Council.
4. Madigan, M. (2015, June 6). Flood inquiry divides a community still searching for closure. *The Courier Mail*. Retrieved from <https://www.couriermail.com.au/news/queensland/flood-inquiry-divides-a-community-still-searching-for-closure/news-story/3ada8052f57e2f5cfcfbffcb7ac2fa98>.

# LOCKYER VALLEY LOCAL HERITAGE STUDY



PLACE NAME	Grantham State School and Residence		
OTHER NAMES	N/A		
PLACE ID NUMBER	LHP0304		
ADDRESS	15-21 Victor Street, Grantham	Lot on Plan or GPS Coordinates	40SP154108



## HISTORICAL CONTEXT

### Historical period:

School: World War I 1914 – 1918  
Residence: Interwar 1919 – 1939

### History:

Grantham State School was opened in January 1905 with Miss Fielding as the head teacher and 25 students enrolled<sup>1</sup>. By 1915, the small school had become overcrowded, and Queensland Rail was petitioned to surrender the neighbouring railway reserve to the Department of Education. After several years, the allotment was finally acquired by Grantham State School in 1917. A new schoolhouse was constructed, designed to accommodate upwards of 100 students was planned, measuring 12m by 6.7m with two wide verandahs flanking each end<sup>2</sup>. No longer needed, the earlier school block was relocated to the Grantham School of Arts.

In the 1930s, a new cottage was erected on the grounds to serve as the teacher's residence<sup>3</sup>. In 1951, the nearby Grantham Scrub Provisional School (1898) closed, and students were moved to Grantham State School<sup>4</sup>. Grantham State School was renovated and expanded across the latter part of the 20<sup>th</sup> century, and the old schoolhouse was raised onto concrete stumps, the verandahs were enclosed, and a new wing was built to the rear of the building<sup>5</sup>. The site continues to operate as a school.

### Historical themes:

9. Educating Queenslanders.  
9.1. Primary schooling.



## PHYSICAL DESCRIPTION

The Grantham State School is a 1917 structure, with early photography of the school showing it to be a C/T2 Department of Public Works design. This original structure has been heavily adapted and renovated over the course of the 20<sup>th</sup> century, though some central elements of the structure remain. It is a rectangular structure clad in weatherboard with an open gabled roof. An early ventilation fleche has been removed from the roof, though the battened gable ends survive.

The verandahs have been enclosed with weatherboard and narrow windows. The timber paling and skillion window hoods survive at either end of the schoolhouse, and it appears that the long set of awning windows survive behind a contemporary blind. The timber stumps appear to have been removed or replaced, and the subfloor is enclosed with contemporary cladding. Two water tanks stand on a low platform at the northern end of the building. A large 1950s extension has been attached to the eastern side of the 1917 schoolhouse.

The Grantham State School Residence is a pyramid roof cottage with a front verandah and a rear extension. The residence is clad with weatherboard and retains early sash windows. It is set on timber stumps with timber batten cladding around the subfloor.

## STATEMENT OF SIGNIFICANCE

### Criterion:

### Description:

1. Historical

The Grantham State School and Residence demonstrates the historical development of Grantham in the early 20<sup>th</sup> century and the changing education landscape of the region in the latter part of the 19<sup>th</sup> century into the 20<sup>th</sup> century.

2. Scientific

Does not currently threshold.

3. Typological

The Grantham State School retains characteristics of a WWI-era educational building, with adaptations demonstrative of changing approaches to educational philosophies in Queensland during this period. The teacher's residence is demonstrative of a type and style of early educational architecture under the Department of Public Works.

4. Aesthetic

Does not currently threshold.

5. Social and Spiritual

The Grantham State School and Residence holds social importance as a longstanding educational institution, serving generations of local families for over a century and maintaining its central role within the Grantham community.

### Statement summary:

The Grantham State School and Residence is historically significant for its role in the development of Grantham as an early rural school constructed in the early 20<sup>th</sup> century. The main schoolhouse, although extended to the east and adapted for changing educational needs, retains characteristics of a WWI-era school. The teacher's residence, built in the interwar period, retains early structural elements and fabric, and is demonstrative of a type and style of early educational architecture under

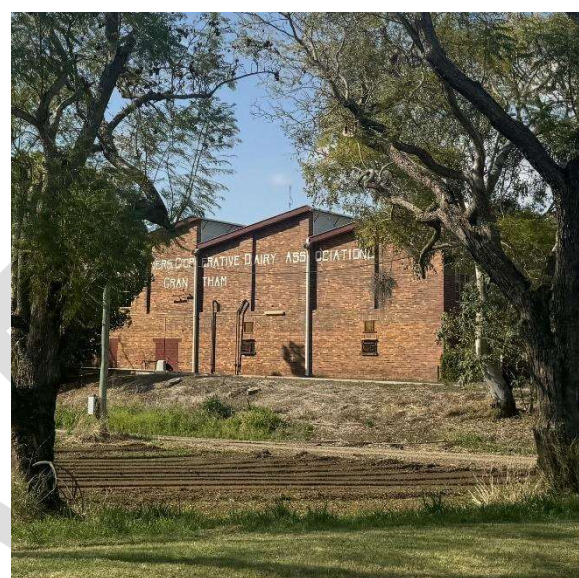
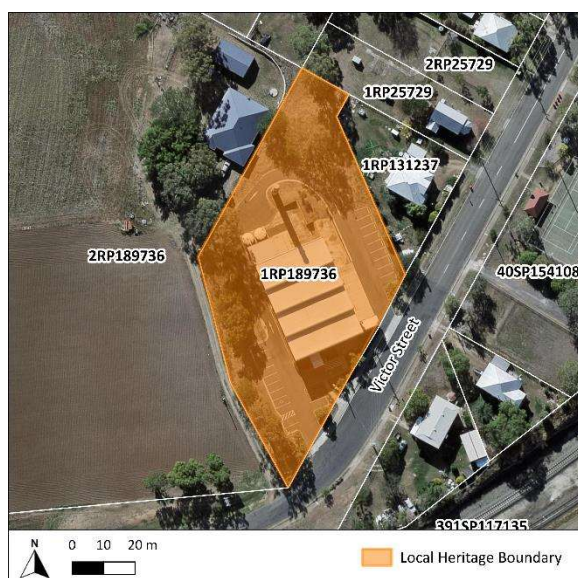
the Department of Public Works. It holds social importance as a longstanding educational institution, serving generations of local families for over a century and maintaining its central role within the Grantham community.

## REFERENCES

1. Queensland Government. (n.d.). *Admission Register - Grantham State School*. Item ID: ITM611582. Retrieved from <https://www.archivessearch.qld.gov.au/items/ITM611582>; Our Grantham Letter: Our School. (1905, January 28). *The Queensland Times*, p. 14. Retrieved from <http://nla.gov.au/nla.news-article124518653>.
2. Talbot, D., & the Gatton & District Historical Society (2014). *A History of Gatton & District 1824 - 2008*. Lockyer Valley Regional Council.
3. QImagery. 1933 & 1951 Aerial Imagery. Retrieved from <https://qimagery.information.qld.gov.au/>.
4. Talbot, D., & the Gatton & District Historical Society (2014). *A History of Gatton & District 1824 - 2008*. Lockyer Valley Regional Council.
5. QImagery. 1933 & 1951 Aerial Imagery. Retrieved from <https://qimagery.information.qld.gov.au/>.
6. *Our school*. (2020, January 31). Grantham State School. Retrieved from <https://granthamss.eq.edu.au/our-school>; School annual report: Queensland state school reporting. (2023). In *Grantham State School*. Queensland Government. Retrieved from <https://granthamss.eq.edu.au/supportandresources/formsanddocuments/annualreports/annual-report-2023.pdf>.

# LOCKYER VALLEY LOCAL HERITAGE STUDY

<b>PLACE NAME</b>	Grantham Butter Factory (former)		
<b>OTHER NAMES</b>	The Queensland Farmers' Cooperative Dairy Association Ltd Grantham		
<b>PLACE ID NUMBER</b>	LHP0305		
<b>ADDRESS</b>	6 Victor Street, Grantham	<b>Lot on Plan or GPS Coordinates</b>	1RP189736



## HISTORICAL CONTEXT

**Historical period:** Interwar 1919 – 1939

### History:

The Grantham Butter Factory (former) was constructed in 1926<sup>1</sup>, an upgrade from the earlier 1907 butter factory<sup>2</sup>. Prior to the construction of the new factory, Duncan Saxelby (secretary of the Queensland Butter and Cheese Factory Managers' Association) and Charles Henry Jamieson (Chairman of Directors of the Queensland Farmers' Association) inspected butter factories in New South Wales and Victoria for ideas for the Grantham Butter Factory<sup>3</sup>. The factory was then designed, constructed, and equipped by Waugh and Josephson of Brisbane<sup>4</sup>. The opening was a momentous occasion, with over 2,000 people in attendance from surrounding districts at what was described as an event of historical importance for the dairying industry in Queensland<sup>5</sup>.

The factory, described as modern in design and equipment, was constructed with a saw tooth roof to allow natural light and ventilation throughout the building. The receiving, pasteurising, and manufacturing rooms were lined with a glass-like tessellated tile which were described as the first installation of its kind in Queensland, said to demonstrate the progress in factory design as it allowed for more hygienic manufacturing<sup>6</sup>. The factory was equipped to manufacture 70-80 tonnes of butter per week<sup>7</sup>.

In 1940, the factory was inspected by one of Melbourne's largest milk distributors, Mr. J. Hogan, who stated that it was comparable to the best factories in Victoria<sup>8</sup>. By 1948, the factory had produced a total of 51,000,000 pounds of butter valued at approximately £3,150,000<sup>9</sup>. Over the years, the factory had won numerous prizes at regional shows and factory managers' conferences

for the quality butter produced<sup>10</sup>. The factory continued to be a principal source of livelihood in Grantham throughout the 1950s<sup>11</sup>, during which time it is said that the 28 metre chimney was replaced<sup>12</sup>.

The Grantham Butter Factory (former) ceased business and closed in 1971<sup>13</sup> as part of the deregulation and down-grading of the dairying industry in Queensland<sup>14</sup>. The factory remained vacant and in poor condition until the 2011 floods when the inside was cleaned out and the building was used as a donation collection and distribution point<sup>15</sup>. In May 2011, with the assistance of donations, the Rotary Club of Toowoomba South purchased the factory to convert it into a community centre<sup>16</sup>. After two years of restoration, including the replacement of the entire roof, the factory reopened<sup>17</sup> and continues to be used as a community and function venue.

<b>Historical themes:</b>	<p>2. Exploiting, utilising, and transforming the land. 2.4. Agricultural activities.</p> <p>3. Developing secondary and tertiary industries. 3.1. Feeding Queenslanders. 3.2. Developing manufacturing capacities. 3.3. Developing economic links outside Queensland.</p>
---------------------------	--

## PHYSICAL DESCRIPTION

The Grantham Butter Factory (former) is a large, double height brick structure with a saw tooth roof and brick pilasters on most elevations. The front façade (southeastern elevation) is adorned with the words “Queensland Farmers’ Cooperative Dairy Association Ltd Grantham” with a continuous row of windows above and sets of multi-pane windows with lintels below. The entrance consists of contemporary doors sheltered by a corrugated iron and timber awning. A protruding section at the eastern end features smaller windows of the same style and a plaque from the construction depicting the names of key figures of the association.

The southwestern elevation is also adorned with the name of the association and features infilled windows at ground level and large multi-pane windows at upper level. The brick of the northeastern elevation is largely concealed, potentially where there was once an extension present and is now part of the carpark. A large concrete chimney is present to the rear.

There are mature plantings present on site.

## STATEMENT OF SIGNIFICANCE

<b>Criterion:</b>	<b>Description:</b>
1. Historical	The Grantham Butter Factory (former) demonstrates the historical and economic development of Grantham during the early 20 <sup>th</sup> century and the rise and eventual decline of the dairying industry in southeast Queensland. It has a special association with the Queensland Farmers’ Cooperative Dairy Association Ltd.
2. Scientific	Does not currently threshold.
3. Typological	The Grantham Butter Factory (former) demonstrates principal characteristics of an early 20 <sup>th</sup> century brick dairy processing factory.

4. Aesthetic	The Grantham Butter Factory (former) is a principal landmark in Grantham and is a prominent feature within the William Street streetscape.
5. Social and Spiritual	The Grantham Butter Factory (former) holds social significance for the local community as a representation of the growth and development of Grantham, and for its strong ties to the Grantham and surrounding farming communities.

#### Statement summary:

The Grantham Butter Factory (former) demonstrates the historical and economic development of Grantham during the early 20<sup>th</sup> century and the rise and eventual decline of the dairying industry in southeast Queensland. It has a special association with the Queensland Farmers' Cooperative Dairy Association Ltd. It demonstrates principal characteristics of an early 20<sup>th</sup> century brick dairy processing facility. It is a principal landmark in Grantham and is a prominent feature within the William Street streetscape. It holds social significance for the local community as a representation of the growth and development of Grantham, and for its strong ties to the Grantham and surrounding farming communities.

#### REFERENCES

1. Official Opening. (1926, August 18). *The Brisbane Courier*, p. 22. Retrieved from <http://nla.gov.au/nla.news-article21044077>.
2. Grantham Butter-Factory. (1907, May 30). *The Queensland Times, Ipswich Herald, and General Advertiser*, p. 11. Retrieved from <http://nla.gov.au/nla.news-article123996144>.
3. Jamieson Again Star Witness at Royal Commission. (1932, August 15). *The Daily Standard*, p. 3. Retrieved from <http://nla.gov.au/nla.news-article182814007>.
4. Climax of Co-Operative Effort. (1926, August 18). *The Queensland Times*, p. 9. Retrieved from <http://nla.gov.au/nla.news-article118638849>.
5. Official Opening. (1926, August 18). *The Brisbane Courier*, p. 22. Retrieved from <http://nla.gov.au/nla.news-article21044077>; Butter Factory. (1926, August 18). *The Daily Mail*, p. 5. Retrieved from <http://nla.gov.au/nla.news-article218347909>.
6. Up-to-Date Butter Making Plant. (1926, August 18). *The Queensland Times*, p. 9. Retrieved from <http://nla.gov.au/nla.news-article118638862>.
7. Butter Factory. (1926, August 18). *The Daily Mail*, p. 5. Retrieved from <http://nla.gov.au/nla.news-article218347909>.
8. Director's Visit. (1940, August 23). *The Queensland Times*, p. 2. Retrieved from <http://nla.gov.au/nla.news-article114527632>.
9. Grantham Butter Factory. (1948, January 1). *Queensland Country Life*, p. 5. Retrieved from <http://nla.gov.au/nla.news-article97104739>.
10. Lockyer District. (1939, April 5). *The Queensland Times*, p. 4. Retrieved from <http://nla.gov.au/nla.news-article118447210>; Director's Visit. (1940, August 23). *The Queensland Times*, p. 2. Retrieved from <http://nla.gov.au/nla.news-article114527632>.
11. Bennett, H. (1999). *Gatton Shire: Thematic Historical Overview*. Cultural Heritage Branch, Queensland Environmental Protection Agency.
12. Queensland Reconstruction Authority. (n.d.). *Rebuilding Grantham together: Development Scheme Grantham Reconstruction Area*. Retrieved from <https://www.qra.qld.gov.au/sites/default/files/2018-10/rebuilding-grantham-full.pdf>.
13. Bennett, H. (1999). *Gatton Shire: Thematic Historical Overview*. Cultural Heritage Branch, Queensland Environmental Protection Agency.

14. Queensland Reconstruction Authority. (n.d.). *Rebuilding Grantham together: Development Scheme Grantham Reconstruction Area*. Retrieved from <https://www.qra.qld.gov.au/sites/default/files/2018-10/rebuilding-grantham-full.pdf>.
15. Maesele, M. (2011, March 26). *Rotary buys factory*. The Courier Mail. Retrieved from <https://www.couriermail.com.au/news/queensland/ipswich/rotary-buys-factory/news-story/0e1b76348fca940898ed81e88e5e90ba>; Grantham Butter Factory gets \$2m facelift. (2013, June 28). *ABC News*. Retrieved from <https://www.abc.net.au/news/2013-06-28/grantham-butter-factory-gets-2m-facelift/4787284>.
16. Butter factory gains centre stage as activity centre. (2013, July 2). *The Courier Mail*. Retrieved from <https://www.couriermail.com.au/news/queensland/ipswich/property/butter-factory-gains-centre-stage-as-activity-centre/news-story/edf5ab83bf255bf29d2d81e73ae00603>.
17. Grantham Butter Factory gets \$2m facelift. (2013, June 28). *ABC News*. Retrieved from <https://www.abc.net.au/news/2013-06-28/grantham-butter-factory-gets-2m-facelift/4787284>.