



Lockyer Valley Local Heritage Study

Forest Hill Citations

Draft for Consultation

July 2025

CONTENTS

LHP0101	Forest Hill Presbyterian Church	14 Church Street	Forest Hill	Lot 40 RP7805
LHP0102	Forest Hill St Thomas' Anglican Church (former)	9 Church Street	Forest Hill	Lot 105 SP192314
LHP0103	Forest Hill School of Arts	22 Railway Street	Forest Hill	Lot 1 F5304
LHP0104	G. Wyman General Store (former)	42 Victoria Street	Forest Hill	Lot 2 RP149296; Road Reserve
LHP0105	33 Victoria Street, Forest Hill (Shop)	33 Victoria Street	Forest Hill	Lot 20 SP192308; Road Reserve
LHP0106	Forest Hill Cinema (former)	6 Railway Street	Forest Hill	Lot 103 F5301; Road Reserve
LHP0107	Forest Hill Commercial Bank (former)	44 Victoria Street	Forest Hill	Lot 5 RP119037; Road Reserve
LHP0108	46 Victoria Street, Forest Hill (Shop)	46 Victoria Street	Forest Hill	Lot 4 RP119037; Road Reserve
LHP0109	Forest Hill Masonic Lodge	9 Victoria Street	Forest Hill	Lot 92 RP7805
LHP0110	Forest Hill Post Office	40 Victoria Street	Forest Hill	Lot 1 RP149296; Road Reserve
LHP0111	Forest Hill Railway Shelter	37 Victoria Street	Forest Hill	Lot 1 CP867703
LHP0112	Forest Hill St Joseph's Catholic Church	8-10 Hunt Street	Forest Hill	Lot 115 F5301; Lot 116 F5301
LHP0113	38 Victoria Street, Forest Hill (Shop)	38 Victoria Street	Forest Hill	Lot 5 RP111163

LOCKYER VALLEY LOCAL HERITAGE STUDY

PLACE NAME	Forest Hill Presbyterian Church		
OTHER NAMES	Central Church Forest Hill		
PLACE ID NUMBER	LHP0101		
ADDRESS	14 Church Street, Forest Hill	Lot on Plan or GPS Coordinates	40RP7805



HISTORICAL CONTEXT

Historical period: Federation 1890 – 1914

History:

Presbyterian services were held in Forest Hill as early as 1894 in private homes, with a Sunday school established by 1895. As the congregation grew, so did the need for a dedicated church building. As such, the Forest Hill Presbyterian Church, now known as the Central Church, was constructed in 1899 on land that was donated by the Jondaryan Estates Company¹.

The church is noted for its Ladies of the Guild, fundraisers, Christmas events², concerts and festivals³. In the early 1900s, the church was also the meeting place for Lodge Argyle (the Forest Hill Freemasons), until their own building was constructed in 1922⁴. For the church's 40th anniversary, the town commemorated a souvenir booklet "The Thistle", containing messages and historical information, written by the church's founder Reverend John Stoddart⁵.

The church continues its original use.

Historical themes:

- 6. Building settlements, towns, cities, and dwellings.
 - 6.2. Planning and forming settlements.
- 8. Creating social and cultural institutions.
 - 8.1. Worshipping and religious institutions.
 - 8.2. Cultural activities.
 - 8.6. Commemorating significant events.

PHYSICAL DESCRIPTION

The Forest Hill Presbyterian Church is a typical example of a rural timber church. The church is a T-Shape design with nave and chancel, set on low timber stumps, and is clad in weatherboard. Its steeply pitched gable roof is clad in corrugated iron.

The front façade (southwestern elevation) features a central porch. This and the front gable are both adorned with a finial and gable pediment. The front gable also includes a rectangular vent.

Short steps lead up to French doors on the central porch, with two narrow arched windows flanking the porch. The other elevations feature narrow rectangular windows. A contemporary access ramp on the northwestern side and short steps on the southeastern side provide entry through single doors that lead into a later skillion extension to the rear.

STATEMENT OF SIGNIFICANCE

Criterion:	Description:
1. Historical	The Forest Hill Presbyterian Church demonstrates the historical pattern of Presbyterianism in Forest Hill, dating to 1899. It reflects the historical development of religious and social activities in the Forest Hill area during this period. It remains in use as a church, continuing its historical function.
2. Scientific	Does not currently threshold.
3. Typological	The Forest Hill Presbyterian Church is a good example of a typical late 19 th century rural timber church, with features such as a steeply pitched gable roof, weatherboard, and central porch, demonstrating common design principles of small rural churches of this era.
4. Aesthetic	Does not currently threshold.
5. Social and Spiritual	The Forest Hill Presbyterian Church holds social and spiritual significance for the local community as a site of early Presbyterianism and as a venue for community events. Its ongoing function reinforces its role in fostering spiritual connections and maintaining the cultural identity of the Presbyterian congregation in Forest Hill.

Statement summary:

The Forest Hill Presbyterian Church is historically significant for its role in the development of Presbyterianism in Forest Hill. Built in 1899, it exemplifies the typical design of modest rural churches of the period. The church holds social and spiritual importance as a site of early Presbyterianism and as a venue for community events, with its ongoing function reinforcing its role in fostering spiritual connections and maintaining the cultural identity of the Presbyterian congregation in Forest Hill.

REFERENCES

1. Opening of a New Church at Forest Hill. (1899, January 31). *Queensland Times, Ipswich Herald, and General Advertiser*, p. 2. Retrieved from <http://nla.gov.au/nla.news-article123159412>.
2. Forest Hill Presbyterian Church. (1905, December 7). *The Queensland Times*, p. 11. Retrieved from <http://nla.gov.au/nla.news-article123907761>.

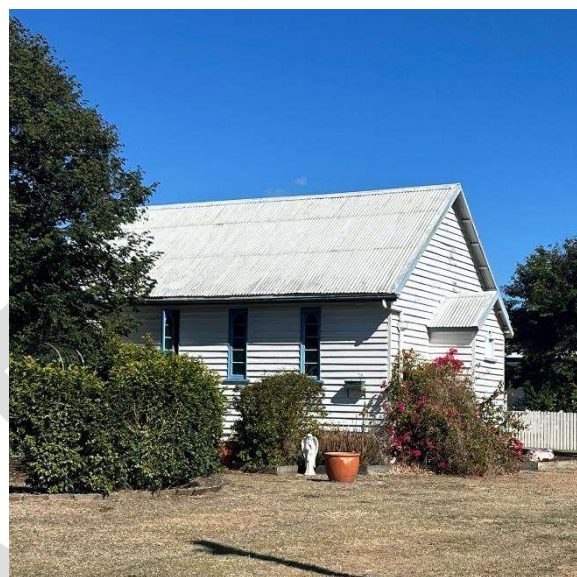
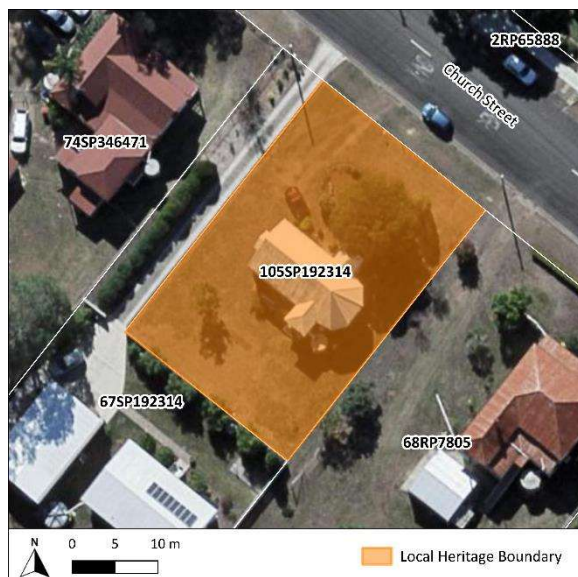
3. Forest Hill Presbyterian Church. (1909, December 7). *The Queensland Times*, p. 2. Retrieved from <http://nla.gov.au/nla.news-article111630447>.
4. Lodge Argyle, No. 1016, S. C. (1910, February 14). *The Queensland Times*, p. 4. Retrieved from <http://nla.gov.au/nla.news-article112025315>.
5. Forest Hill Presbyterian Souvenir. (1940, February 8). *The Queensland Times*, p. 3. Retrieved from <http://nla.gov.au/nla.news-article122078111>.

DRAFT

LOCKYER VALLEY LOCAL HERITAGE STUDY



PLACE NAME	Forest Hill St Thomas' Anglican Church (former)		
OTHER NAMES	Anglican Church Southern Queensland; Anglican Diocese of Brisbane; Saint Thomas		
PLACE ID NUMBER	LHP0102		
ADDRESS	9 Church Street, Forest Hill	Lot on Plan or GPS Coordinates	105SP192314



HISTORICAL CONTEXT

Historical period: Federation 1890 – 1914

History:

Whilst early sources are limited, a news article from 1903 indicates that the Forest Hill St Thomas's Anglican Church (former) was open and operating by this time¹. The church was noted historically for its social events, weddings², and Sunday School festivities including concerts³. Aerial imagery suggests that between 1933 and 1951, the church underwent structural modifications, including the addition of two small extensions on the northeastern and southwestern sides. These changes may have occurred at the same time as the formation of the octagonal shape at the rear of the building⁴. The church is now a private residence.

Historical themes:

- 6. Building settlements, towns, cities, and dwellings.
 - 6.2. Planning and forming settlements.
- 8. Creating social and cultural institutions.
 - 8.1. Worshipping and religious institutions.
 - 8.2. Cultural activities.
 - 8.6. Commemorating significant events.

PHYSICAL DESCRIPTION

The Forest Hill St Thomas' Anglican Church (former) is a typical example of a rural timber church, with some structural alterations that have occurred over time. The church is set on low timber stumps and clad in weatherboard. Its steeply pitched gable roof is clad in corrugated iron.

The front façade (northwestern elevation) features a central porch with a small window. The northeastern and southwestern elevations feature rectangular windows with lancet designs, with two small protruding portions towards the rear. The southeastern elevation features an octagonal shape that is a later addition.

STATEMENT OF SIGNIFICANCE

Criterion:	Description:
1. Historical	The Forest Hill St Thomas' Anglican Church (former) demonstrates the historical pattern of Anglicanism in Forest Hill, dating to c.1900s. It reflects the historical development of religious and social activities in Forest Hill during this period.
2. Scientific	Does not currently threshold.
3. Typological	The Forest Hill St Thomas' Anglican Church (former) is a good example of a typical early 20 th century timber church, with features such as a steeply pitched gable roof, weatherboard, and central porch, demonstrating common design principles of small rural churches of this era.
4. Aesthetic	Does not currently threshold.
5. Social and Spiritual	The Forest Hill St Thomas' Anglican Church (former) holds social and spiritual significance for the local community as a site of early Anglicanism and as a venue for community events.

Statement summary:

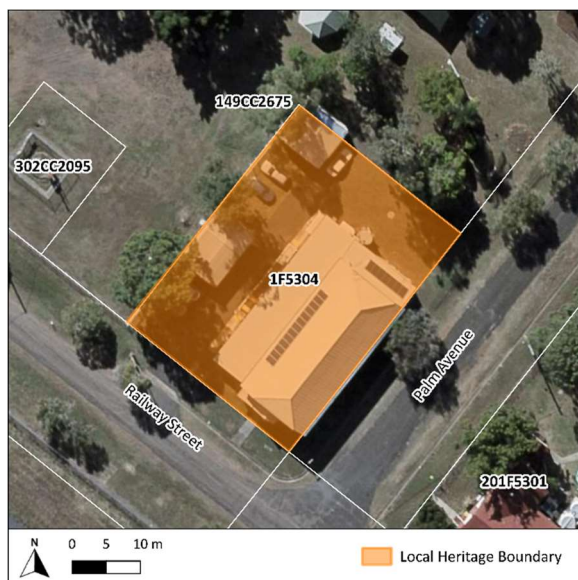
The Forest Hill St Thomas' Anglican Church (former) is historically significant for its role in the development of Anglicanism in the Forest Hill area. The church appears to have been constructed around c.1900 and exemplifies the typical design of modest rural churches of the period. The church holds social and spiritual significance as a site of early Anglicanism and as a venue for community events.

REFERENCES

1. A Forest Hill Farewell. (1903, April 16). *Queensland Times, Ipswich Herald, and General Advertiser*, p. 7. Retrieved from <http://nla.gov.au/nla.news-article125276731>.
2. Our Forest Hill Letter. (1907, July 13). *Queensland Times, Ipswich Herald, and General Advertiser*, p. 16. Retrieved from <http://nla.gov.au/nla.news-article124245579>.
3. Our Forest Hill Letter. (1907, May 30). *Queensland Times, Ipswich Herald, and General Advertiser*, p. 6. Retrieved from <http://nla.gov.au/nla.news-article123996119>.
4. QImagery. 1933 and 1951 aerial imagery. Retrieved from <https://qimagery.information.qld.gov.au/>.

LOCKYER VALLEY LOCAL HERITAGE STUDY

PLACE NAME	Forest Hill School of Arts		
OTHER NAMES	N/A		
PLACE ID NUMBER	LHP0103		
ADDRESS	22 Railway Street, Forest Hill	Lot on Plan or GPS Coordinates	1F5304



HISTORICAL CONTEXT

Historical period: Federation 1890 – 1914

History:

The Forest School of Arts, designed by Ipswich architect Mr. H. E. Wyman and constructed by Mr. W. French, was constructed on a portion of the Recreation Reserve in 1911. The building was described as including a rear wing to be temporarily utilised as a library and reading room and the main hall featuring a crow's ash floor for dancing purposes¹.

Based on historical photographs, convex window hoods were added to the side windows sometime after 1914². By 1933, an extension was added to the northwestern elevation, which may have been further altered and/or extended over the years³. In 2010, the School of Arts was restumped and underwent renovations including a new kitchen, new stage boards, and interior and exterior painting⁴.

A variety of classes were held in the School of Arts, such as dressmaking classes and book-keeping conducted by the Ipswich Technical College⁵. Over the years, the School of Arts was also known to have been utilised for a range of community events including dances⁶, concerts⁷, flower shows⁸, euchre tournaments⁹, and monthly meetings for the Country Women's Association¹⁰.

The School of Arts continues to be used as a community venue.

Historical themes:

- 8. Creating social and cultural institutions.
 - 8.3. Organisations and societies.
- 9. Educating Queenslanders.
 - 9.3. Educating adults.

PHYSICAL DESCRIPTION

The Forest Hill School of Arts features similar characteristics to the earlier 1907 Forest Hill Post Office. It is a low set, rectangular plan timber structure clad in weatherboard. The hipped gambrel roof is clad in corrugated iron with contemporary solar panels.

The front façade (southwestern elevation) features a decorative timber bargeboard with timber brackets. Two multi-pane arched windows flank a front central porch. The porch features a corrugated iron gable roof with a decorative bargeboard surmounted with a finial. The gable end features VJ boards and is adorned with the words "Forest Hill School of Arts Est. 1911". The porch is supported by decorative timber posts and fretwork with a curved VJ board balustrade. Diagonal timber French doors with a three-pane fanlight are present within the porch. The porch is accessed via timber steps with a simple horizontal timber balustrade. A skillion roofed extension with a two-pane window has been added to the northwestern elevation of the porch.

The northwestern elevation features a pre-1933 extension with a corrugated iron skillion roof. The front façade is clad in weatherboard, whilst the side is clad in chamferboard. The extension features sash windows in the same size and style as the original building, except for three small windows on the southeastern end. Two doors are present with timber steps and a contemporary access ramp. The original windows and doors on this elevation of the main building are partially obscured by the extension but appear to remain extant.

The southeastern elevation features French doors with a three-pane fanlight accessed via timber steps with the same style balustrade as the porch. Flanking the doors are awning windows, whilst the northeastern-most window is a sash window. All windows on this elevation feature metal convex window hoods. At the northeastern-most end is a single VJ timber door with metal convex window hood accessed via timber steps with the same style balustrade as the porch.

On the northeastern elevation is the rear wing (the former library) which features a skillion roof clad in corrugated iron with contemporary solar panels. The rear wall features sash windows and contemporary air conditioning units on separate metal frame adjacent to the wall. A water tank elevated on timber stumps is present.

There are two contemporary corrugated iron sheds present on the site.

STATEMENT OF SIGNIFICANCE

Criterion:	Description:
1. Historical	The Forest Hill School of Arts, in use for over a century, demonstrates the historical development of the School of Arts movement in Forest Hill from the early 20 th century as an early place for adult education and community functions.
2. Scientific	Does not currently threshold.
3. Typological	The Forest Hill School of Arts is an intact and representative example of a 1910s rural timber School of Arts building.
4. Aesthetic	The Forest Hill School of Arts contributes to the visual character of Forest Hill with its high level of craftsmanship and is a visually prominent feature within the streetscape.

5. Social and Spiritual

The Forest Hill School of Arts holds social significance for the local community as a School of Arts building that has been in continuous use for over a century.

Statement summary:

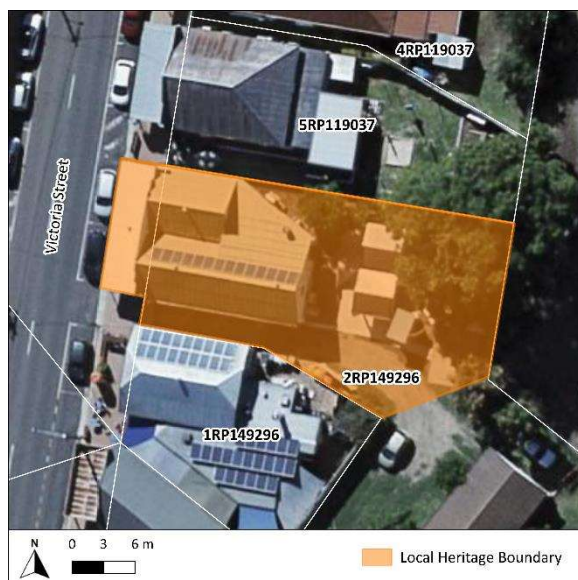
The Forest Hill School of Arts demonstrates the historical development of Forest Hill and the School of Arts movement, serving as an early place for adult education and community functions. It is an intact and representative example of a 1910s rural timber School of Arts building. Its high level of craftsmanship contributes to the visual character of Forest Hill and is a visually prominent feature within the streetscape. It holds social significance for the local community as a School of Arts building that has been in continuous use for over a century.

REFERENCES

1. Forest Hill School of Arts. (1911, June 17). *The Brisbane Courier*, p. 12. Retrieved from <http://nla.gov.au/nla.news-article19706244>.
2. Cox, F. R. (1914). *School of Arts building in Forest Hill, 1914*. State Library of Queensland. Negative: 39230. Retrieved from <https://collections.slg.qld.gov.au/viewer/IE305859>.
3. QImagery. Various Aerial Imagery. Retrieved from <https://qimagery.information.qld.gov.au/>.
4. New look for old Hall. (2010, July 13). *The Courier Mail*. Retrieved from <https://www.couriermail.com.au/news/queensland/gatton/new-look-for-old-hall/news-story/7ba0d32580010ec60c160edd70daac66>.
5. Our Forest Hill Letter. (1913, June 16). *The Queensland Times*, p. 6. Retrieved from <http://nla.gov.au/nla.news-article113110185>.
6. Forest Hill School of Arts. (1913, April 30). *The Queensland Times*, p. 4. Retrieved from <http://nla.gov.au/nla.news-article113089819>.
7. Forest Hill Concert. (1954, April 10). *The Queensland Times*, p. 3. Retrieved from <http://nla.gov.au/nla.news-article118233194>.
8. Forest Hill Flower Show. (1949, September 28). *The Queensland Times*, p. 7. Retrieved from <http://nla.gov.au/nla.news-article124635917>.
9. Forest Hill Euchre. (1946, October 23). *The Queensland Times*, p. 8. Retrieved from <http://nla.gov.au/nla.news-article118371396>.
10. Lockyer District. (1940, December 3). *The Queensland Times*, p. 8. Retrieved from <http://nla.gov.au/nla.news-article114218531>.

LOCKYER VALLEY LOCAL HERITAGE STUDY

PLACE NAME	G. Wyman's General Store (former)		
OTHER NAMES	Cafe Sorella		
PLACE ID NUMBER	LHP0104		
ADDRESS	42 Victoria Street, Forest Hill	Lot on Plan or GPS Coordinates	2RP149296; Road Reserve



HISTORICAL CONTEXT

Historical period: Federation 1890 – 1914

History:

George Wyman of Laidley was a well-respected and prominent figure in the Lockyer District during early settlement, having been a produce merchant, grocer, general storekeeper, Hon. Secretary of the Laidley Agricultural Society, President of the Laidley Cricket Club, and Mayor of the first Laidley Town Council during his life¹.

George first established a general store in Forest Hill in 1898, following the establishment of his Laidley branch². In 1900, he planned to extend his general store by 6 metres, making it approximately 15 metres by 6 metres, and install two large show windows to the front façade³. In 1906, it was described that Wyman had erected a large "bulk store" measuring at approximately 15 metres by 7 metres, which is similar in size to his earlier store⁴. It is unclear whether the current structure was one of two stores owned by Wyman or if the 1906 structure was a replacement for his earlier store, however, it is known that the current structure was present from at least 1907 and was known as "G. Wyman's General Store"⁵.

The store also housed Forest Hill's first branch of the Queensland National Bank from c. 1901 until the bank received a purpose-built building in c. 1909⁶. George Wyman died in 1911⁷, and by 1927 the store was under the management of Mr. T. Waller⁸. Based on the early measurements and historical aerial imagery, the building appears to have doubled in width with a separately roofed extension added to the side of the building⁹.

The building is no longer used as a general store and currently operates as a café.

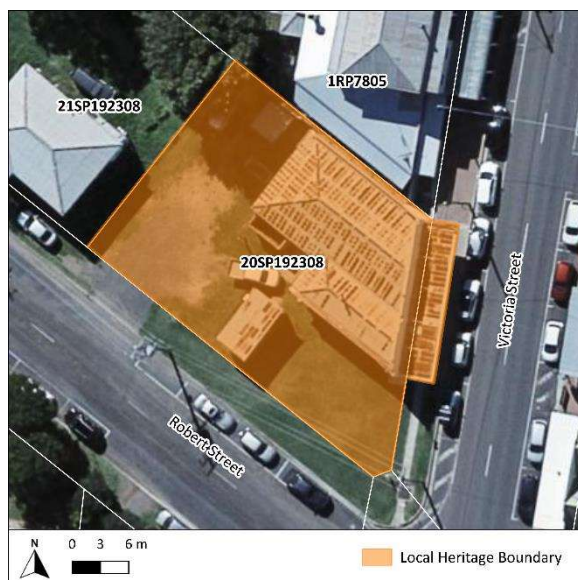
Historical themes:	3. Developing secondary and tertiary industries. 3.8. Marketing, retailing and service industries.
PHYSICAL DESCRIPTION	
<p>G. Wyman's General Store (former) is a timber structure clad in weatherboard. The corrugated iron hip and valley roof has a front gable end concealed behind a stepped timber and fibro cement (FC) sheeted parapet. A corrugated iron skillion awning with FC sheeted sides is supported by contemporary posts.</p> <p>The front façade (western elevation) has been clad in contemporary metal sheeting, featuring large contemporary windows across the elevation with central French doors accessed via a brick step. The side elevations retain weatherboard cladding, with the northern elevation featuring metal convex window hoods over windows and doors. Contemporary metal gates flank the northern and southern elevations.</p>	
STATEMENT OF SIGNIFICANCE	
Criterion:	Description:
1. Historical	G. Wyman's General Store (former) demonstrates the historical development of Forest Hill in the late 19 th and early 20 th century and has a direct association with prominent Laidley figure George Wyman. It is the earliest remaining commercial store in Forest Hill.
2. Scientific	Does not currently threshold.
3. Typological	Although altered from its original state, G. Wyman's General Store (former) still retains early principal characteristics of an early 20 th century commercial building.
4. Aesthetic	G. Wyman's General Store (former) holds aesthetic significance for its contribution to the main street as a historical commercial precinct.
5. Social and Spiritual	G. Wyman's General Store (former) holds social significance for the local community as an early essential business in Forest Hill and its direct association with George Wyman.
Statement summary:	
<p>G. Wyman's General Store (former) demonstrates the historical development of Forest Hill in the late 19th and early 20th century and has a direct association with prominent Laidley figure George Wyman. As the earliest remaining commercial store in Forest Hill, it is a representative example of an early 20th century commercial building. It holds aesthetic significance for its contribution to the main street as a historical commercial precinct. It holds social significance for the local community as an early essential business in Forest Hill and for its direct association with George Wyman.</p>	

REFERENCES

1. The Late Mr. George Wyman. (1911, March 23). *The Queensland Times*, p. 4. Retrieved from <http://nla.gov.au/nla.news-article112084057>; Queensland Government. (2022). *G Wyman Building*. Queensland Heritage Register (QHR: 600654). Retrieved from <https://apps.des.qld.gov.au/heritage-register/detail/?id=600654>.
2. Through the Laidley and Gatton Districts. (1898, August 30). *Queensland Times, Ipswich Herald, and General Advertiser*, p. 7. Retrieved from <http://nla.gov.au/nla.news-article123594436>; Agriculture. (1905, April 15). *The Queenslander*, p. 34. Retrieved from <http://nla.gov.au/nla.news-article20356211>.
3. Forest Hill. (1900, August 28). *Queensland Times, Ipswich Herald, and General Advertiser*, p. 5. Retrieved from <http://nla.gov.au/nla.news-article123266301>.
4. Forest Hill Jottings. (1906, July 31). *Queensland Times, Ipswich Herald, and General Advertiser*, p. 11. Retrieved from <http://nla.gov.au/nla.news-article124382381>.
5. Forest Hill Post Office. (1907, November 30). *Queensland Times, Ipswich Herald, and General Advertiser*, p. 11. Retrieved from <http://nla.gov.au/nla.news-article124246610>.
6. Queensland Government. (2022). *Shop 3, Victoria Street, Forest Hill*. Queensland Heritage Register (QHR: 600651). Retrieved from <https://apps.des.qld.gov.au/heritage-register/detail/?id=600651>.
7. The Late Mr. George Wyman. (1911, March 23). *The Queensland Times*, p. 4. Retrieved from <http://nla.gov.au/nla.news-article112084057>.
8. Lockyer District. (1927, February 9). *The Queensland Times*, p. 5. Retrieved from <http://nla.gov.au/nla.news-article116910308>.
9. QImagery. 1933 Aerial Imagery. Retrieved from <https://qimagery.information.qld.gov.au/>.

LOCKYER VALLEY LOCAL HERITAGE STUDY

PLACE NAME	33 Victoria Street, Forest Hill (Shop)		
OTHER NAMES	N/A		
PLACE ID NUMBER	LHP0105		
ADDRESS	33 Victoria Street, Forest Hill	Lot on Plan or GPS Coordinates	20SP192308; Road Reserve



HISTORICAL CONTEXT

Historical period: World War II 1939 – 1945

History:

The site at 33 Victoria Street, Forest Hill originally housed a timber butcher shop in the early 1900s¹. By the 1930s, the site housed multiple shops owned by Mrs. A. A. Ballantine and leased out to businesses, including Mr. W. Crossley's store, which were destroyed by fire in 1939². In 1940, Mrs. Ballantine erected a new shop in its place for Mr. Crossley³, designed by architects W. Hodgen & Hodgen⁴. It is believed to initially have housed Crossley's Café in one of the two shop spaces, which was used to host weekly bridge tournaments⁵, wedding receptions⁶, and annual Forest Hill Cricket Club meetings⁷.

It has since been used for various purposes, with it currently used for retail purposes.

Historical themes:

- 3. Developing secondary and tertiary industries.
- 3.1. Feeding Queenslanders.

PHYSICAL DESCRIPTION

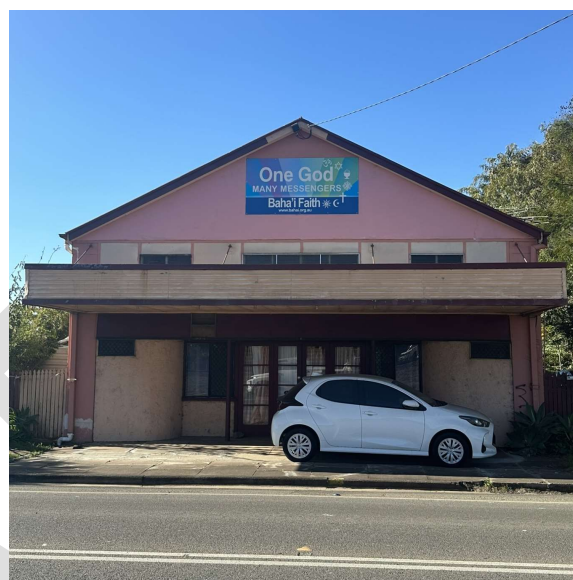
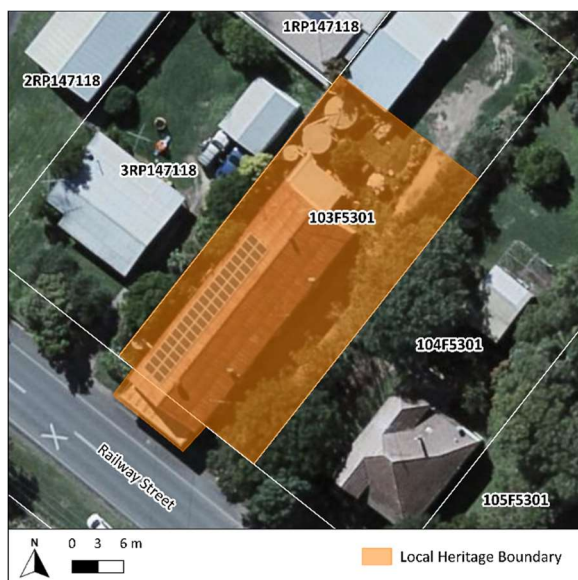
33 Victoria Street, Forest Hill is a commercial premises, comprising of two adjoining tenancies. The façade consists of a prominent awning roof over the footpath, with a pressed metal ceiling and a stepped Art Deco-style parapet above. A corrugated iron hip and valley roof exists for each tenancy behind the parapet. A small portion of masonry on the northern and southern elevations is stuccoed. The shopfronts contain a mixture of masonry and fibro cement sheeting with large display windows and recessed shop entry doors.

STATEMENT OF SIGNIFICANCE	
Criterion:	Description:
1. Historical	33 Victoria Street, Forest Hill demonstrates the historical development of Forest Hill in the 1940s, replacing earlier commercial buildings destroyed by fire.
2. Scientific	Does not currently threshold.
3. Typological	33 Victoria Street, Forest Hill is intact and representative example of a 1940s Art Deco-style commercial building.
4. Aesthetic	33 Victoria Street, Forest Hill's Art Deco design contributes positively to the main street and Forest Hill's commercial precinct.
5. Social and Spiritual	33 Victoria Street, Forest Hill holds social significance for the local community as a well-considered commercial premises since the 1940s.
Statement summary: 33 Victoria Street, Forest Hill demonstrates the historical development of Forest Hill in the 1940s. It is a good representative example of a 1940s Art Deco-style commercial building and contributes positively to the historical streetscape of Forest Hill's commercial area. It holds social significance for the local community as a commercial premises since the 1940s.	
REFERENCES	
1. Burnett, E. (1909). <i>View of Victoria Street, Forest Hill, 1909</i> . State Library of Queensland. Negative number: 39242. Retrieved from https://collections.slg.qld.gov.au/viewer/IE307704 . 2. Five Shops Burnt at Forest Hill. (1939, December 11). <i>The Telegraph</i> , p. 5. Retrieved from http://nla.gov.au/nla.news-article184745464 . 3. Lockyer District. (1940, June 21). <i>Queensland Times</i> , p. 2. Retrieved from http://nla.gov.au/nla.news-article114532877 . 4. Advertising. (1940, March 16). <i>The Courier-Mail</i> , p. 15. Retrieved from http://nla.gov.au/nla.news-article40863529 . 5. Forest Hill. (1945, February 9). <i>The Queensland Times</i> , p. 4. Retrieved from http://nla.gov.au/nla.news-article114622375 . 6. Burgess-Steffens. (1941, July 29). <i>The Courier-Mail</i> , p. 7. Retrieved from http://nla.gov.au/nla.news-article41953403 . 7. Lockyer District. (1940, October 7). <i>The Queensland Times</i> , p. 3. Retrieved from http://nla.gov.au/nla.news-article114216247 .	

LOCKYER VALLEY LOCAL HERITAGE STUDY



PLACE NAME	Forest Hill Cinema (former)		
OTHER NAMES	Baha'i Faith Centre		
PLACE ID NUMBER	LHP0106		
ADDRESS	6 Railway Street, Forest Hill	Lot on Plan or GPS Coordinates	103F5301; Road Reserve



HISTORICAL CONTEXT

Historical period: Interwar 1919 – 1939

History:

The Forest Hill Cinema (former) was opened in 1924 by Mr. D. Ogilvie of Rosewood¹. The cinema, described as a big hall², also held wood chopping contests³ and hosted various fundraising events⁴.

Sometime between 1938⁵ and 1951, the cinema had been converted into a garage owned by H. Raebig. In May 1951, a fire ignited at the garage and destroyed three motor cars and a truck. The extent of damage cost £3,000 and potentially destroyed the internal office⁶. It is unclear how much of the structure was saved from the fire, however the place appears to survive with key features externally.

The site is currently used for the Baha'i Faith.

Historical themes:

- 3. Developing secondary and tertiary industries.
3.10. Entertaining for profit.
- 8. Creating social and cultural institutions.
8.2. Cultural activities.

PHYSICAL DESCRIPTION

The Forest Hill Cinema (former) is a symmetrical rectangular plan building with a corrugated iron gable roof featuring ridgeline vents and contemporary solar panels. The building has likely undergone various alterations over the years as it has been adapted for different uses and portions repaired or rebuilt after fire damages internally. The front façade features a flat roof corrugated iron awning, fibro cement sheeting, and stucco with an Art Deco idiom. Louvre windows are present above the awning and rectangular windows with security screens below the awning with front central glass doors.

Contemporary plantings are present around the site.

STATEMENT OF SIGNIFICANCE

Criterion:	Description:
1. Historical	The Forest Hill Cinema (former) demonstrates the historical development of Forest Hill throughout the 1920s-1950s as a building with varying uses to adapt to the changing needs of the town.
2. Scientific	Does not currently threshold.
3. Typological	The Forest Hill Cinema (former) is a rare example of a small community hall and cinema that was later repurposed as a garage. The rapid rise in the use of motor cars in the interwar and post-war era saw many halls convert to garages and mechanics.
4. Aesthetic	Does not currently threshold.
5. Social and Spiritual	The Forest Hill Cinema (former) holds social significance for the local community as a commercial business (cinema then garage) during the early to mid-20 th century.

Statement summary:

The Forest Hill Cinema (former) demonstrates the historical development of Forest Hill throughout the 1920s-1950s as a building with varying uses to adapt to the changing needs of the town. It holds social significance for the local community as a commercial business (cinema then garage) during the early to mid-20th century.

REFERENCES

1. Forest Hill. (1924, December 16). *The Brisbane Courier*, p. 9. Retrieved from <http://nla.gov.au/nla.news-article22880000>.
2. Colour Standard. (1938, March 17). *Maryborough Chronicle, Wide Bay, and Burnett Advertiser*, p. 3. Retrieved from <http://nla.gov.au/nla.news-article151203561>.
3. Lockyer District. (1926, November 3). *The Queensland Times*, p. 4. Retrieved from <http://nla.gov.au/nla.news-article115651954>.
4. Lockyer District. (1928, November 17). *The Queensland Times*, p. 7. Retrieved from <http://nla.gov.au/nla.news-article115338427>.
5. Colour Standard. (1938, March 17). *Maryborough Chronicle, Wide Bay, and Burnett Advertiser*, p. 3. Retrieved from <http://nla.gov.au/nla.news-article151203561>.

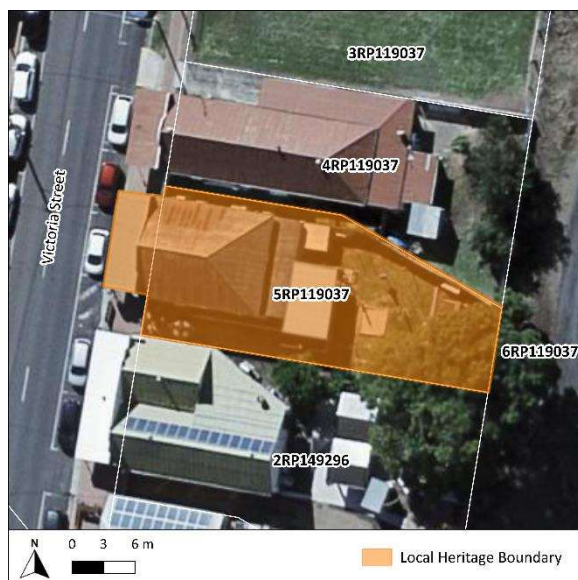
6. Garage Fire at Forest Hill. (1951, May 30). *The Queensland Times*, p. 2. Retrieved from <http://nla.gov.au/nla.news-article124612482>.

DRAFT

LOCKYER VALLEY LOCAL HERITAGE STUDY



PLACE NAME	Forest Hill Commercial Bank (former)		
OTHER NAMES	Commercial Bank of Australia Ltd		
PLACE ID NUMBER	LHP0107		
ADDRESS	44 Victoria Street, Forest Hill	Lot on Plan or GPS Coordinates	5RP119037; Road Reserve



HISTORICAL CONTEXT

Historical period: Federation 1890 – 1914

History:

In 1910, Mr. Albert Von Lossberg, former manager of the Commercial Bank of Australia in Caboolture, opened a new branch in Forest Hill¹. It was the second bank to be opened in Forest Hill, following the opening of the Queensland National Bank in 1901 which occupied space within George Wyman's General Store until its own premises was constructed in c. 1909².

It is said to have continued its historical use as a bank, later becoming Westpac, until its closure in 1995. The building has since been utilised for various businesses such as a childcare centre³ and most recently a hairdresser.

Historical themes: 3. Developing secondary and tertiary industries.
3.7. Financing.

PHYSICAL DESCRIPTION

The Forest Hill Commercial Bank (former) is a symmetrical timber structure clad in chamferboard on the front façade (western elevation) and weatherboard on the remaining elevations. The corrugated iron hip roof has a front gable end concealed behind a timber and chamferboard parapet with gabled peak. A corrugated iron bullnose awning with vertical timber sides extends over the footpath and is supported by timber stop chamfer posts with decorative timber brackets, with contemporary concrete blocks at the base.

The front windows have been altered since the original construction, now featuring large multi-pane windows flanking the central door. The central door has been altered, now recessed and a single door, and is accessed via concrete steps with a contemporary metal balustrade. Some doors and windows on the southern elevation feature convex metal window hoods. Contemporary gates and fences flank the northern and southern elevations. A contemporary extension appears to be present on the eastern elevation.

STATEMENT OF SIGNIFICANCE

Criterion:	Description:
1. Historical	The Forest Hill Commercial Bank (former) demonstrates the historical development and economic evolution of Forest Hill in the early 20 th century.
2. Scientific	Does not currently threshold.
3. Typological	The Forest Hill Commercial Bank (former) is an intact and representative example of early 20 th century timber commercial buildings.
4. Aesthetic	The Forest Hill Commercial Bank (former) holds aesthetic significance for its contribution to the main street as a historical commercial precinct.
5. Social and Spiritual	The Forest Hill Commercial Bank (former) holds social significance for the local community as a banking institution in continuous use between 1910 – c. 1995.

Statement summary:

The Forest Hill Commercial Bank (former) demonstrates the historical development and economic evolution of Forest Hill in the early 20th century. It is an intact and representative example of early 20th century timber commercial buildings. It holds aesthetic significance for its contribution to the main street as a historical commercial precinct. It holds social significance for the local community as a banking institution that was in continuous use for c. 85 years prior to its closure.

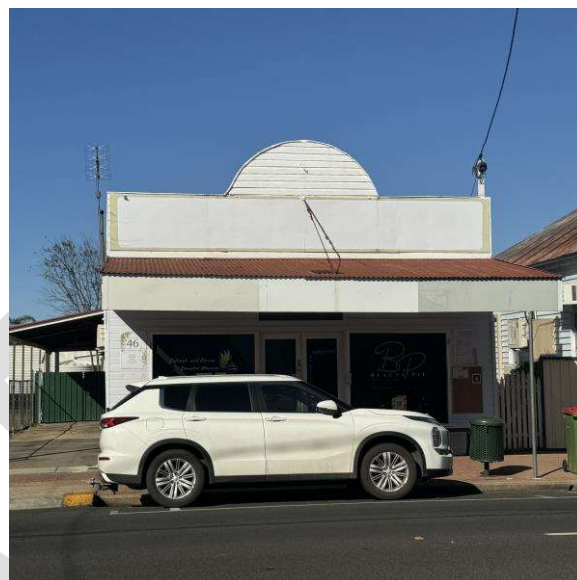
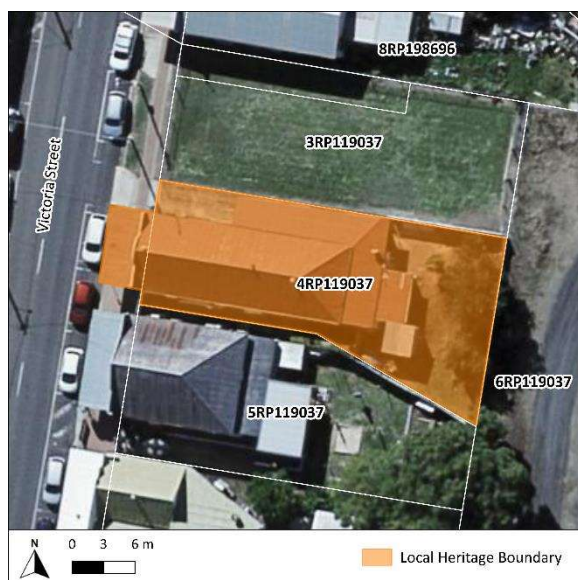
REFERENCES

1. Personal. (1910, October 12). *The Queensland Times*, p. 7. Retrieved from <http://nla.gov.au/nla.news-article112029101>.
2. Queensland Government. (2022). *Shop 3, Victoria Street, Forest Hill*. Queensland Heritage Register (QHR: 600651). Retrieved from <https://apps.des.qld.gov.au/heritage-register/detail/?id=600651>.
3. Luvya Lockyer. (2021). *Forest Hill Self Guided Tours*. Lockyer Valley Regional Council. Retrieved from https://issuu.com/lockyervalleyregionalcouncil/docs/foresthill_a5_web.

LOCKYER VALLEY LOCAL HERITAGE STUDY



PLACE NAME	46 Victoria Street, Forest Hill (Shop)		
OTHER NAMES	N/A		
PLACE ID NUMBER	LHP0108		
ADDRESS	46 Victoria Street, Forest Hill	Lot on Plan or GPS Coordinates	4RP119037; Road Reserve



HISTORICAL CONTEXT

Historical period: Interwar 1919 – 1939

History:

It is unclear when the store at 46 Victoria Street, Forest Hill was constructed. According to historical records, the premises was occupied in the 1930s by Mr. W. Crossley's Newsagent and Tobacconist which also sold an array of fruit, confectionary, fancy goods, and ice cream¹. Although its use likely varied throughout the years, photographs from 1975 show it to also be utilised as a newsagency². The premises is consistent with a commercial premises constructed in the early part of the 20th century and is now a private residence.

Historical themes:

- 3. Developing secondary and tertiary industries.
- 3.8. Marketing, retailing, and service industries.
- 3.9. Informing Queenslanders.

PHYSICAL DESCRIPTION

46 Victoria Street, Forest Hill is a symmetrical, rectangular timber structure clad in chamferboard (western elevation) and weatherboard (remaining elevations). The corrugated iron hip roof has ridgeline vents and features a front gable end concealed behind a semi-circle and rectangular chamferboard parapet. The front façade features a corrugated iron skillion awning shading the front entrance and footpath, which consists of contemporary windows and French doors.

Whilst it is unclear about the early layout, the rear portion of the structure incorporates a small residence, with some contemporary alterations to windows and doors observed. A contemporary skillion awning has been added to the northern and eastern elevations.

STATEMENT OF SIGNIFICANCE

Criterion:	Description:
1. Historical	46 Victoria Street, Forest Hill demonstrates the historical development of Forest Hill in the early 20 th century as an early commercial shop.
2. Scientific	Does not currently threshold.
3. Typological	46 Victoria Street, Forest Hill retains early principal characteristics of early 20 th century timber commercial buildings.
4. Aesthetic	46 Victoria Street, Forest Hill holds aesthetic significance as it forms a positive contribution to the main street and Forest Hill's commercial precinct.
5. Social and Spiritual	Does not currently threshold.

Statement summary:

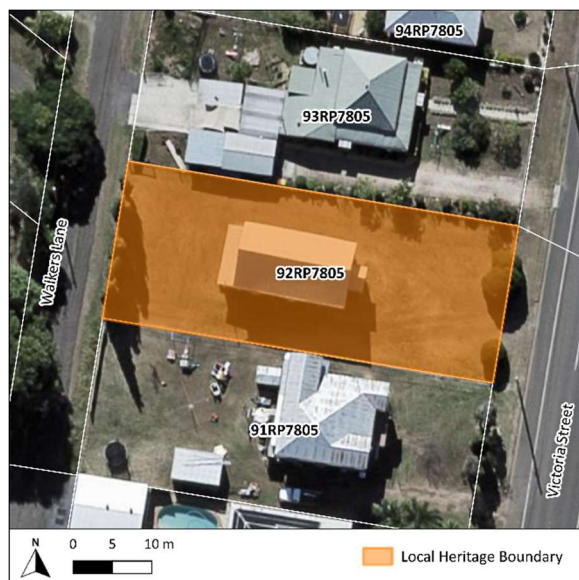
46 Victoria Street, Forest Hill demonstrates the historical development of Forest Hill in the early 20th century as an early commercial shop. It holds aesthetic significance for its contribution to the main street and Forest Hill's commercial precinct.

REFERENCES

1. *Commercial Bank, Forest Hill, ca. 1931*. (c. 1931). State Library of Queensland. Negative number: 8573. Retrieved from <https://collections.slg.qld.gov.au/viewer/IE394953>; Advertising. (1937, September 30). *The Queensland Times*, p. 6. Retrieved from <http://nla.gov.au/nla.news-article124605762>.
2. Baker, M. (1975). *Row of shops in Forest Hill, Queensland, 1975*. State Library of Queensland. Retrieved from <https://collections.slg.qld.gov.au/viewer/IE2659204>.

LOCKYER VALLEY LOCAL HERITAGE STUDY

PLACE NAME	Forest Hill Masonic Lodge		
OTHER NAMES	Forest Hill Masonic Centre; Lodge Argyle No. 164		
PLACE ID NUMBER	LHP0109		
ADDRESS	9 Victoria Street, Forest Hill	Lot on Plan or GPS Coordinates	92RP7805



HISTORICAL CONTEXT

Historical period: Interwar 1919 – 1939

History:

Lodge Argyle, a Freemason group, was established in Forest Hill in 1906^{1,2}. Prior to the construction of a dedicated building, Lodge Argyle would hold their meetings at the Presbyterian Church³. In 1922, the Forest Hill Masonic Temple was constructed, designed by W. Laurie (Laidley) and erected by John Renton (Forest Hill). The building was described as featuring silky oak panelling internally with the outer wall being weatherboard. The building also had a 'double roof' to combat the Queensland heat and had a rafted ceiling⁴. The building is described as 45ft (c.13.7m) by 24ft (c.7.3m) with walls being 12ft (c.3.6m) high⁵.

Its opening was attended by Freemasons from across the region, including Brisbane, Rosewood, Laidley, Gatton, Helidon, and Lowood, were in attendance of the opening⁶. The Forest Hill Masonic Lodge continues to serve as a Masonic Centre.

Historical themes:

- 6. Building settlements, towns, cities, and dwellings.
 - 6.2. Planning and forming settlements.
- 8. Creating social and cultural institutions.
 - 8.2. Cultural activities.
 - 8.3 Organisations and societies.

PHYSICAL DESCRIPTION

The Forest Hill Masonic Lodge shares similar design characteristics with typical rural community buildings such as churches. It is a symmetrical, rectangular-plan timber building clad in weatherboard, elevated on contemporary metal stumps likely having replaced the original timber stumps. It features a steeply pitched gable roof clad in corrugated iron.

The front façade (eastern elevation) features a central porch, above which is a sign for the lodge displaying the Freemasons symbol. Small arched windows adorn the porch and main walls. A set of steps leads to an entry door on the southern elevation. A contemporary skillion roof extension is located at the rear of the building.

STATEMENT OF SIGNIFICANCE

Criterion:	Description:
1. Historical	The Forest Hill Masonic Lodge demonstrates the historical presence of Freemasonry in Forest Hill since the early 1900s. Its establishment and continued function as a Masonic Centre reflect the spread of Freemasonry through rural Queensland in the early 20 th century.
2. Scientific	Does not currently threshold.
3. Typological	The Forest Hill Masonic Lodge, constructed in 1922, demonstrates the principal characteristics of a small, timber community building. Its rectangular plan, weatherboard cladding, steeply pitched gable roof, and central porch are characteristic design features, making it a representative example of such community-oriented structures.
4. Aesthetic	Does not currently threshold.
5. Social and Spiritual	As a longstanding meeting place for the Freemason community, the lodge serves as both a social hub and a site of ritual significance. The building's ongoing use as a Masonic Centre underscores its continuing role as a place of gathering, ceremony, and identity for the Freemason community in Forest Hill.

Statement summary:

The Forest Hill Masonic Lodge is historically significant as a longstanding centre for Freemasonry in Forest Hill, reflecting the early 20th century development of fraternal societies in rural Queensland. Constructed in 1922, it demonstrates the principal characteristics of a small, timber community building. Socially and spiritually, it remains important as a place of gathering, ceremony, and identity for the Freemason community in Forest Hill, maintaining its original purpose into the present day.

REFERENCES

1. Masonic Installation at Forest Hill. (1907, July 30). *The Brisbane Courier*, p. 2. Retrieved from <http://nla.gov.au/nla.news-article19398306>.
2. Our Forest Hill Letter. (1906, August 16). *The Queensland Times, Ipswich Herald, and General Advertiser*, p. 10. Retrieved from <http://nla.gov.au/nla.news-article124377644>.

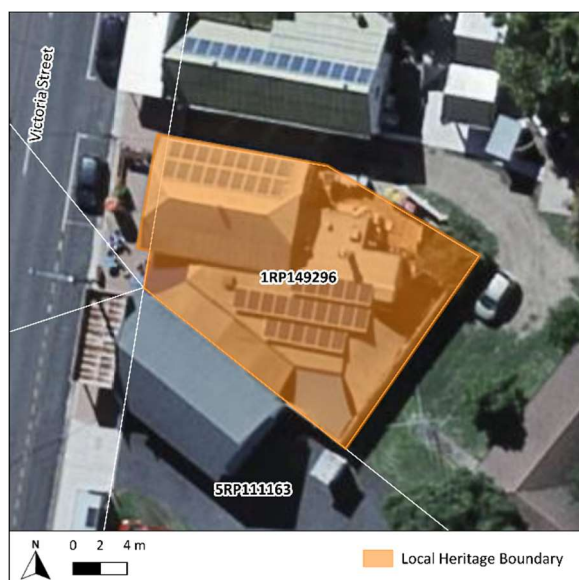
3. Lodge Argyle, No. 1016, S. C. (1910, February 14). *The Queensland Times*, p. 4. Retrieved from <http://nla.gov.au/nla.news-article112025315>.
4. Lockyer District: Forest Hill. (1922, October 6). *The Queensland Times*, p. 6. Retrieved from <http://nla.gov.au/nla.news-article111127710>.
5. Forest Hill: Masonic Installation. (1922, October 6). *Brisbane Courier*, p.7. Retrieved from <http://nla.gov.au/nla.news-article20575556>.
6. Lockyer District: Forest Hill. (1922, October 6). *The Queensland Times*, p. 6. Retrieved from <http://nla.gov.au/nla.news-article111127710>.

DRAFT

LOCKYER VALLEY LOCAL HERITAGE STUDY



PLACE NAME	Forest Hill Post Office		
OTHER NAMES	N/A		
PLACE ID NUMBER	LHP0110		
ADDRESS	40 Victoria Street, Forest Hill	Lot on Plan or GPS Coordinates	1RP149296; Road Reserve



HISTORICAL CONTEXT

Historical period: Federation 1890 – 1914

History:

Postal services were present in Forest Hill by at least 1892, with it being listed in the post office directory as having a Parcel Post Office¹. In 1907, the erection of a new Forest Hill Post Office was underway by Mr. J. Beaufoy on the land adjoining the G. Wyman General Store. It was proposed to serve as a post office, telegraph office, and telephone office² and was to open in the first week of January 1908³. During the c. 1950s, the exterior of the post office was clad in fibro cement sheeting with much of the timber fretwork, posts, and balustrades of the porch either removed or covered⁴. At some stage after this, the fibro sheeting was removed from all walls except for the northern elevation and the timber features of the porch were uncovered and/or reconstructed.

It continues to operate as a post office but is now also a gift shop and hospitality venue.

Historical themes:

- 5. Moving goods, people and information.
- 5.7. Telecommunications.
- 5.8. Postal services.

PHYSICAL DESCRIPTION

The Forest Hill Post Office is a low set, rectangular plan structure clad in chamferboard on all elevations except the northern elevation which has been clad in fibro sheeting. The hipped gambrel roof is clad in corrugated iron with an early vent along the ridgeline and contemporary solar panels.

The front façade (western elevation) features a set of two sash windows, with a lead light window for the upper pane. The window is sheltered by a skillion window hood clad in corrugated iron with timber detailing, however, the original timber side brackets have since been removed. South of this window is an entry porch with timber fretwork, posts, and balustrade, some of which may contain early pieces and has been extended to continue the style into the new section created for hospitality purposes. The porch features VJ boards and exposed framing, timber floorboards, and a single timber door for access on the northern side.

The southern elevation is a contemporary extension. The northern elevation has been covered in fibro cement sheeting and features three sets of sash windows.

STATEMENT OF SIGNIFICANCE

Criterion:	Description:
1. Historical	The Forest Hill Post Office demonstrates the historical development of Forest Hill in the early 19 th century as an essential service in the township.
2. Scientific	Does not currently threshold.
3. Typological	The Forest Hill Post Office is an uncommon example of a rural timber post office, demonstrating design characteristics that are somewhat inconsistent with Queensland post office typologies and are likely locally inspired.
4. Aesthetic	The Forest Hill Post Office stands out as a visually prominent central feature within the main street.
5. Social and Spiritual	The Forest Hill Post Office has a strong association with the Forest Hill community as an ongoing primary centre for postal and telecommunication services for over a century.

Statement summary:

The Forest Hill Post Office demonstrates the historical development of Forest Hill in the early 19th century as an essential service in the township. It is an uncommon example of a timber post office demonstrating design characteristics that are unusual within Queensland typologies and are potentially locally inspired. It stands out as a visually prominent feature within the main street. It has a strong association with the local Forest Hill community as an ongoing primary centre for postal and telecommunication services for over a century.

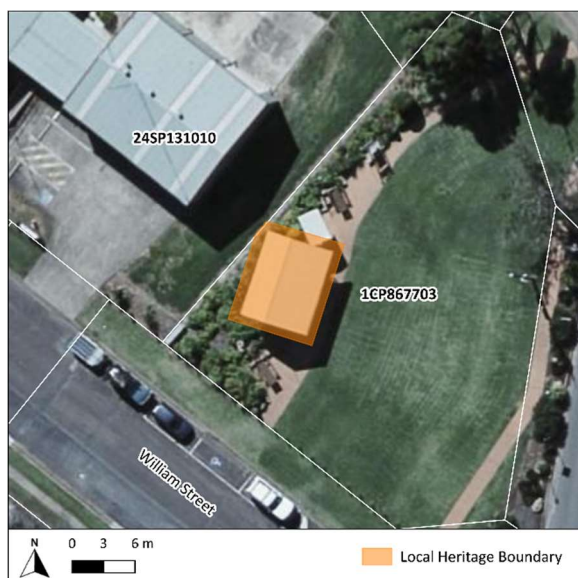
REFERENCES

1. *The Queensland Post Office Directory*. (1892). Weatherhill & Co., Brisbane.
2. Forest Hill Post Office. (1907, November 30). *Queensland Times, Ipswich Herald, and General Advertiser*, p. 11. Retrieved from <http://nla.gov.au/nla.news-article124246610>.
3. Forest Hill News. (1907, December 21). *Queensland Times, Ipswich Herald, and General Advertiser*, p. 14. Retrieved from <http://nla.gov.au/nla.news-article124236315>.
4. *Boonah and Forest Hill Post Offices 1956 and 1957*. (1956-1957). National Archives of Australia. Item ID: 32058673. Retrieved from <https://recordsearch.naa.gov.au/scripts/AutoSearch.asp?O=PSI2&Number=32058673>.

LOCKYER VALLEY LOCAL HERITAGE STUDY



PLACE NAME	Forest Hill Railway Shelter		
OTHER NAMES	N/A		
PLACE ID NUMBER	LHP0111		
ADDRESS	37 Victoria Street, Forest Hill	Lot on Plan or GPS Coordinates	1CP867703



HISTORICAL CONTEXT

Historical period: Federation 1890 – 1914

History:

The railway line between Grandchester and Gatton was completed and open for use in 1866¹. In the 1870s, when Major Boyd purchased a farm in the Lockyer Valley, he was required to depart at Laidley Railway Station and drive to his farm due to the distance. This led to his agency developing a railway siding that he named after his farm, "Forest Hill"². In 1882, Mr. and Mrs. Swan took over the siding³.

In 1886, the siding was closed, and the Railway Department constructed the Forest Hill Railway Station⁴. Mrs. Swan was described as the gatekeeper and caretaker, station master, porter, and office staff and continued as such for three years⁵. The station continued to be in use until its closure in 1992⁶.

The Forest Hill Railway Shelter, originally located adjacent to the railway line, is said to have been built in 1912 and was relocated to its current location in the 2000s⁷.

Historical themes: 5. Moving goods, people and information.
5.3. Using rail.

PHYSICAL DESCRIPTION

The Forest Hill Railway Shelter is a rectangular plan, timber structure clad in weatherboard with a corrugated iron gable roof with an integrated awning for shelter. The opening on eastern elevation features timber fretwork with a central stop chamfer post. A sign reading "Forest Hill" is present on this elevation. The structure has fixed four-pane windows on the northern, western, and southern

elevations. The interior walls have exposed frame and bracing with a timber bench extending across the walls supported by a curved timber bracket.

The structure has been moved from its original location into the "Forest Hill Place" park and is surrounded by contemporary features and plantings.

STATEMENT OF SIGNIFICANCE

Criterion:	Description:
1. Historical	The Forest Hill Railway Shelter is representative of the historical development and evolution of Forest Hill in the early 20 th century and is associated with the railway siding which was established in the late 19 th century.
2. Scientific	Does not currently threshold.
3. Typological	The Forest Hill Railway Shelter is an intact and representative example of early 20 th century timber railway shelters.
4. Aesthetic	The Forest Hill Railway Shelter holds aesthetic significance for its prominent position in the Forest Hill Place park.
5. Social and Spiritual	The Forest Hill Railway Shelter holds social significance for the local community for its association with the early Forest Hill railway siding.

Statement summary:

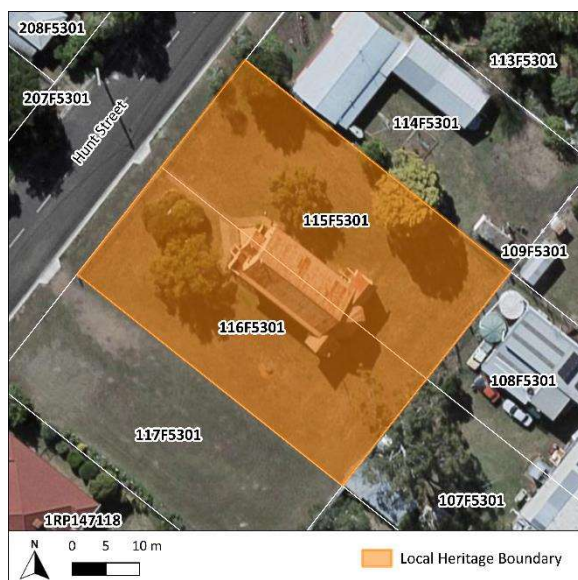
The Forest Hill Railway Shelter is representative of the historical development and evolution of Forest Hill in the early 20th century and is associated with the railway line which was established in the late 19th century. It is an intact and representative example of early 20th century timber railway shelters and holds social significance for the local community for its association with the early Forest Hill railway siding.

REFERENCES

1. Cole, A. E. (1945). Early History of the Queensland Railways. *Journal of the Royal Historical Society of Queensland*, 3(4), 284-311.
2. Forest Hill and Its Development. (1909, July 10). *The Brisbane Courier*, p. 13. Retrieved from <http://nla.gov.au/nla.news-article19590942>.
3. First Station Keeper. (1927, September 10). *The Queensland Times*, p. 6. Retrieved from <http://nla.gov.au/nla.news-article117659922>.
4. Forest Hill and Its Development. (1909, July 10). *The Brisbane Courier*, p. 13. Retrieved from <http://nla.gov.au/nla.news-article19590942>.
5. Death of Mrs. M. Swan. (1933, December 5). *The Queensland Times*, p. 6. Retrieved from <http://nla.gov.au/nla.news-article118513031>; First Station Keeper. (1927, September 10). *The Queensland Times*, p. 6. Retrieved from <http://nla.gov.au/nla.news-article117659922>.
6. Luvya Lockyer. (2021). *Forest Hill Self Guided Tours*. Lockyer Valley Regional Council. Retrieved from https://issuu.com/lockyervalleyregionalcouncil/docs/foresthill_a5_web.
7. Buchanan, G. (2001). *Laidley Shire Council Heritage Study*. Laidley Shire Council.

LOCKYER VALLEY LOCAL HERITAGE STUDY

PLACE NAME	Forest Hill St Joseph's Catholic Church		
OTHER NAMES			
PLACE ID NUMBER	LHP0112		
ADDRESS	8-10 Hunt Street, Forest Hill	Lot on Plan or GPS Coordinates	115F5301; 116F5301



HISTORICAL CONTEXT

Historical period: Interwar 1919 – 1939

History:

The Forest Hill St Joseph's Catholic Church was officially opened on the 26th of June 1938 by Archbishop Buhig¹. The church was remodelled and rebuilt from the Glenore Grove Catholic Church, originally constructed in 1906². The remodelled St Joseph's Catholic Church was described as a wooden structure with sections lined with fibrocement or wood, featuring a red roof and leadlight windows. At the opening, the Archbishop referred to the church as 'filling the missing link between Brisbane and Toowoomba'³. Through extensive fundraising efforts, including dances, euchre tournaments⁴, and plays⁵, the cost of the church, land, and architect was reduced from £780 to £292⁶. The church continues its original use.

Historical themes:

- 6. Building settlements, towns, cities, and dwellings.
 - 6.2. Planning and forming settlements.
- 8. Creating social and cultural institutions.
 - 8.1. Worshipping and religious institutions.
 - 8.2. Cultural activities.
 - 8.6. Commemorating significant events.

PHYSICAL DESCRIPTION

The Forest Hill St Joseph's Catholic Church is a good example of a symmetrical, T-shaped, timber building set on low timber stumps and clad in weatherboard. Its steeply pitched gable roof is clad in red corrugated iron. The front façade (northwestern elevation) features a distinctive central porch with simple fretwork and topped with a simple cross. The porch, supported by timber posts with decorative brackets, houses French pointed arch doors and is flanked by steps on the northeastern side and contemporary steps with an access ramp on the southwestern side.

The front gable end of the church features intricate gable decoration, also topped with a simple cross, and features a set of three lancet windows within rectangular frames above the porch. The rest of the windows are rectangular in shape. The protruding section to the rear includes single doors on each side accessed by small steps.

STATEMENT OF SIGNIFICANCE

Criterion:	Description:
1. Historical	The Forest Hill St Joseph's Catholic Church demonstrates the historical pattern of Catholicism in Forest Hill, dating to the 1930s. It reflects the historical development of religious and social activities in Forest Hill during this period.
2. Scientific	Does not currently threshold.
3. Typological	The Forest Hill St Joseph's Catholic Church is a good example of a typical mid-20 th century T-shaped timber church, with features such as a steeply pitched gable roof, weatherboard, and leadlight windows, demonstrating common design principles of timber rural churches of this era.
4. Aesthetic	The Forest Hill St Joseph's Catholic Church contributes to the visual character of Forest Hill with its harmonious proportions and decorative elements. The decorative detailing adds to the church's aesthetic value, making it a visually prominent feature within the streetscape.
5. Social and Spiritual	The Forest Hill St Joseph's Catholic Church holds social and spiritual significance for the local community as a site of early Catholicism and as a venue for community events. The church's ongoing function reinforces its role in fostering spiritual connections and maintaining the cultural identity of the Catholic congregation in Forest Hill.

Statement summary:

The Forest Hill St Joseph's Catholic Church is historically significant for its role in the development of Catholicism in Forest Hill. Opening in 1938, adapted from a relocated 1906 church, it exemplifies the typical design of rural churches of this period, whilst also demonstrating decorative elements that contribute to its aesthetic value, making it a visually prominent feature within the streetscape. The church holds social and spiritual importance as a site of early Catholic worship and as a venue for community events, with its ongoing function reinforcing its role in fostering spiritual connections and maintaining the cultural identity of the Catholic congregation in Forest Hill.

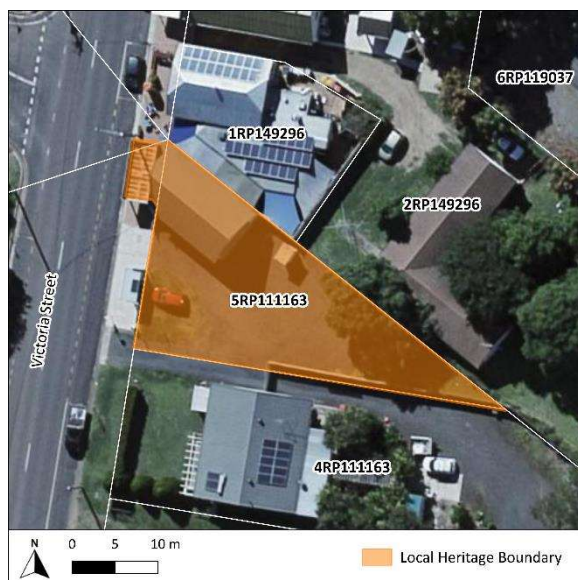
REFERENCES

1. New Catholic Church. (1938, June 28). *The Queensland Times*, p. 6. Retrieved from <http://nla.gov.au/nla.news-article115616191>.
2. New Catholic Church. (1906, November 27). *Queensland Times, Ipswich Herald, and General Advertiser*, p. 12. Retrieved from <http://nla.gov.au/nla.news-article124383380>.
3. New Catholic Church. (1938, June 28). *The Queensland Times*, p. 6. Retrieved from <http://nla.gov.au/nla.news-article115616191>.
4. Lockyer District. (1938, March 16). *The Queensland Times*, p. 9. Retrieved from <http://nla.gov.au/nla.news-article116893763>.
5. Laidley. (1938, April 12). *The Queensland Times*, p. 9. Retrieved from <http://nla.gov.au/nla.news-article116895576>.
6. New Catholic Church. (1938, June 28). *The Queensland Times*, p. 6. Retrieved from <http://nla.gov.au/nla.news-article115616191>.

LOCKYER VALLEY LOCAL HERITAGE STUDY



PLACE NAME	38 Victoria Street, Forest Hill (Shop)		
OTHER NAMES	N/A		
PLACE ID NUMBER	LHP0113		
ADDRESS	38 Victoria Street, Forest Hill	Lot on Plan or GPS Coordinates	5RP111163



HISTORICAL CONTEXT

Historical period: c. Interwar (1919 – 1939) – Postwar (1945 – 1960)

History:

The construction date and historical use of the shop at 38 Victoria Street, Forest Hill is unknown, however, it is likely to have been constructed in the early 20th century, appearing in aerial imagery sometime between 1933-1951¹. A partial image from the late 1950s shows that the shop advertised meat, but little else is known².

It has had various uses in recent years, including as a real estate agent³. Its current use is unknown.

Historical themes:

3. Developing secondary and tertiary industries.
 - 3.1. Marketing, retailing, and service industries.

PHYSICAL DESCRIPTION

38 Victoria Street is a symmetrical, rectangular timber building, with its façade set on an angle to face the street frontage. It is clad in weatherboard and fibro-cement (FC) sheeting. The corrugated iron gable roof features a parapet with a peak corresponding with the ridgeline that has been covered in a form of FC sheeting or similar. A corrugated iron flat roof awning, also with FC sheeting, is supported by stop chamfered timber posts. Two main entry doors are present within a recessed entry, accessed via a single step. The northern entrance door is a contemporary timber and glass door, whilst the southern is a timber door with four glass panels and VJ boards on the lower half. A contemporary skillion roof awning extension is present to the rear. Some contemporary freestanding walls are attached to the northern elevation in relation to the neighbouring café.

STATEMENT OF SIGNIFICANCE	
Criterion:	Description:
1. Historical	38 Victoria Street, Forest Hill demonstrates the historical development of Forest Hill in the early 20 th century as an early commercial store.
2. Scientific	Does not currently threshold.
3. Typological	38 Victoria Street, Forest Hill retains early principal characteristics of an early 20 th century timber commercial building.
4. Aesthetic	38 Victoria Street, Forest Hill holds aesthetic significance as it forms a positive contribution to the main street and Forest Hill's commercial precinct.
5. Social and Spiritual	Does not currently threshold.
Statement summary:	
38 Victoria Street, Forest Hill demonstrates the historical development of Forest Hill in the early 20 th century as an early commercial store. It retains early principal characteristics of an early 20 th century timber commercial building. It holds aesthetic significance as it forms a positive contribution to the main street and Forest Hill's commercial precinct.	
REFERENCES	
1. QImagery. 1933 & 1951 Aerial Imagery. Retrieved from https://qimagery.information.qld.gov.au/ . 2. <i>Boonah and Forest Hill Post Offices 1956 and 1957</i> . (1956-1957). National Archives of Australia. Item ID: 32058673. Retrieved from https://recordsearch.naa.gov.au/scripts/AutoSearch.asp?O=PSI2&Number=32058673 . 3. Google. 2007-2023 Street View Imagery. Retrieved from https://www.google.com/maps .	