



FOREST HILL SILOS VIEWING PRECINCT CONCEPT DESIGN

Prepared for Lockyer Valley Regional Council

1022087
APRIL, 2023

place
design
group.



Australia
China
South East Asia

Follow us on



placedesigngroup.com

Report title	FOREST HILL SILOS CONCEPT DESIGN
Document number	1022087
Prepared for	Forest Hill Shire Council
Authors	Alvin Kirby, Mathieu Fromet de Rosnay
Revision number	02
Revision issue date	April, 2023
Approved	Alvin Kirby
Reason for revision	Landscape Plan Amendment

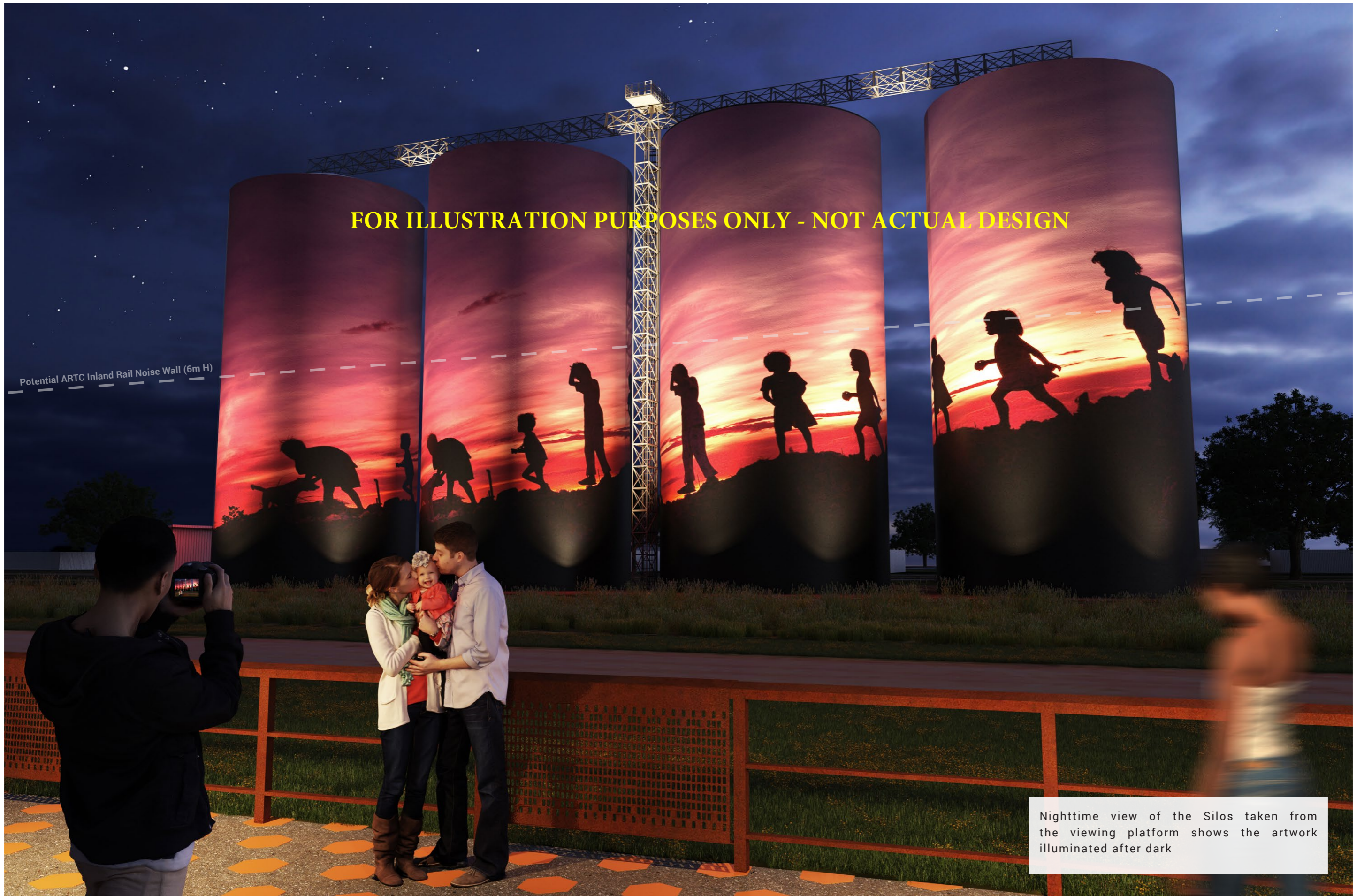
Disclaimer: This report has been prepared in accordance with the scope of services described in the contract or agreement between Place Design Group Pty Ltd ACN 082 370063 and the Client. The report relies upon data, surveys, measurements and results taken at or under the particular times and conditions specified herein. Any findings, conclusions or recommendations only apply to the aforementioned circumstances and no greater reliance should be assumed or drawn by the Client. Furthermore, the report has been prepared solely for use by the Client and Place Design Group accepts no responsibility for its use by other parties.

Contents

1	3D Imagery	3-4
2	Design Drivers	5
3	Landscape Concept Plan	6
4	Landscape Concept Section	7
5	Detail Landscape Concept Plan - Phase 1	8
6	Detail Landscape Concept Plan - Phase 2	9
6	Material Palette	10-11
7	Planting Palette	12-13

1 3D Imagery



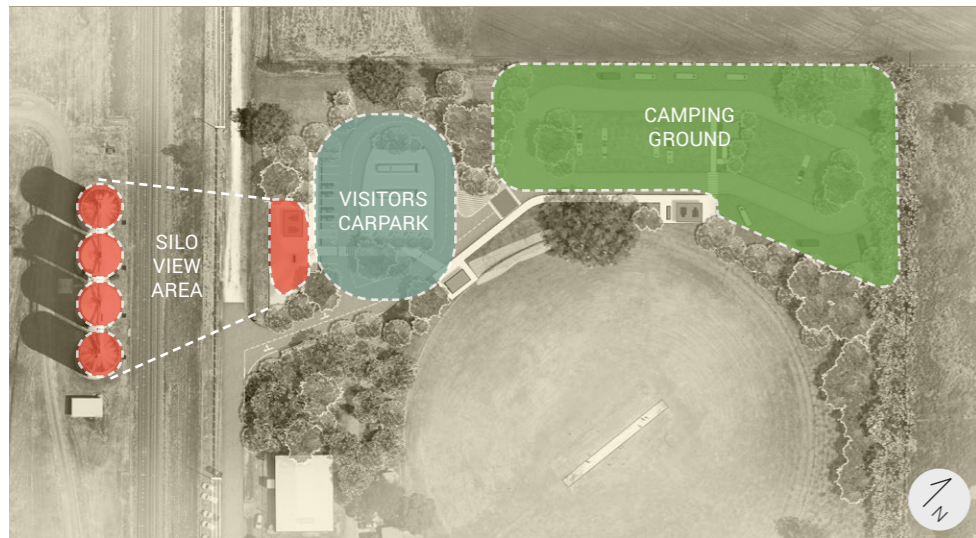


FOR ILLUSTRATION PURPOSES ONLY - NOT ACTUAL DESIGN

Potential ARTC Inland Rail Noise Wall (6m H)

Nighttime view of the Silos taken from the viewing platform shows the artwork illuminated after dark

2 Design Drivers

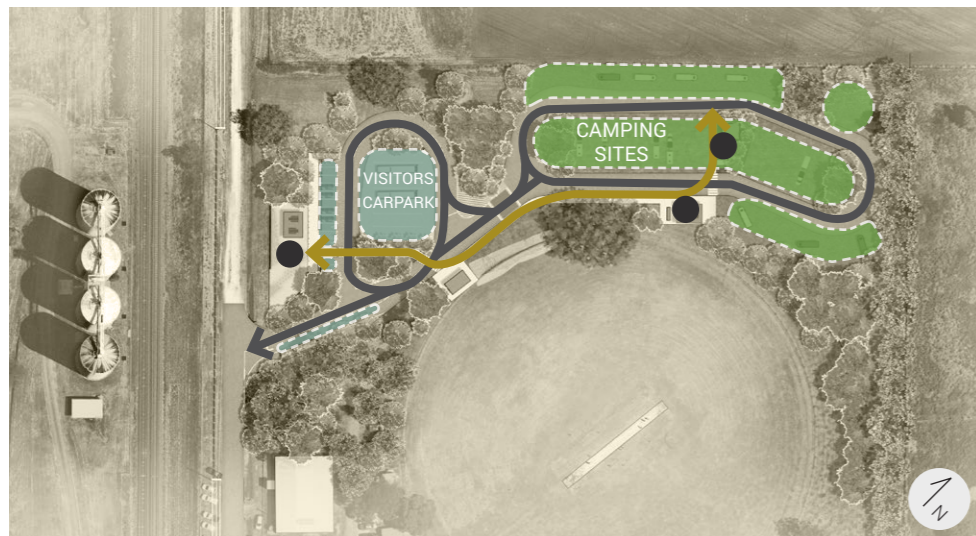


SITE USES

The site will be divided in three main areas: the silos viewing area, the visitors carpark and the campground.

The viewing area is positioned as close as possible to the silos to optimise the viewing experience, and provides users with interpretive displays and a rest space with seating and shaded picnic facilities.

Adjacent to the viewing area, the visitors carpark provides an arrival space for drive tourists and day users, whilst maintaining good sightlines to the silos. The campground is located to the north-west of the site so that there's a sense of separation from the silo viewing area and visitors carpark. Native tree planting is proposed to screen the campground from both the car park and the cricket ground.

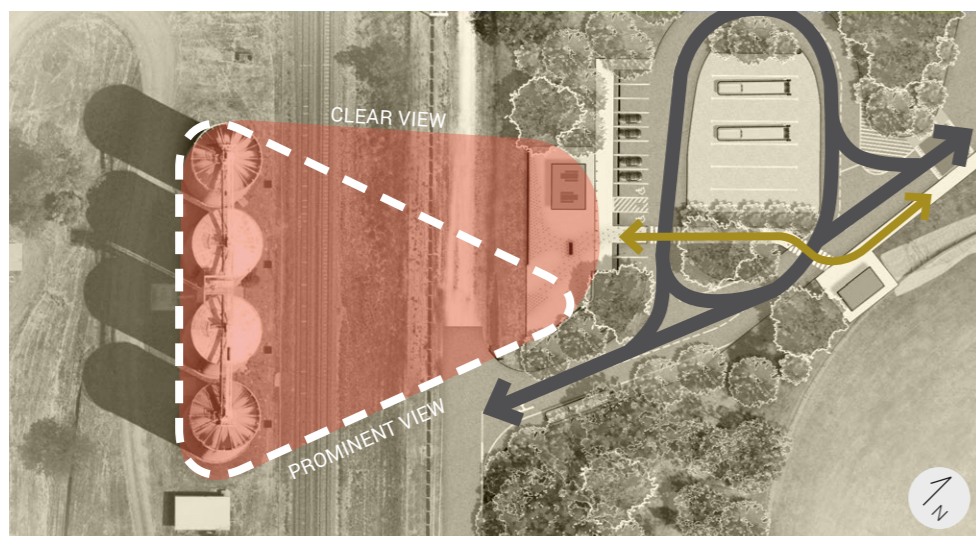


MOVEMENT

A section of Railway Street will be upgraded as a 7 metre wide sealed road. The site will have one vehicular entrance from Railway Street. This has been positioned in the southeast of the site to prevent vehicles passing in front and obscuring the view to the silos.

A sealed driveway is proposed providing looped vehicular access for both the visitors carpark and the campground, with sufficient space for long vehicles (e.g. car + trailer, tourist coach) to maneuver.

Pedestrians will have a designated concrete path to provide safe access to areas of interest, such as the amenities building, the picnic shelter with BBQ and the silo viewing area. Zebra crossings are proposed at critical junctions to provide safe pedestrian movement.






VIEWING AREA

The view of the silos from the viewing area is the prime design driver for the site. In order to keep a strong vista and maximise the viewing angle to the silos, the entry driveway has been angled and pushed as far as possible into the south-east corner of the site.

The viewing area is designed to directly face the silos, creating a strong arrival experience and impactful photographic opportunities for visitors.

LEGEND

-  Vehicle movement
-  Pedestrian movement
-  Areas of interest

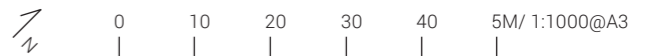
3 Landscape Concept Plan



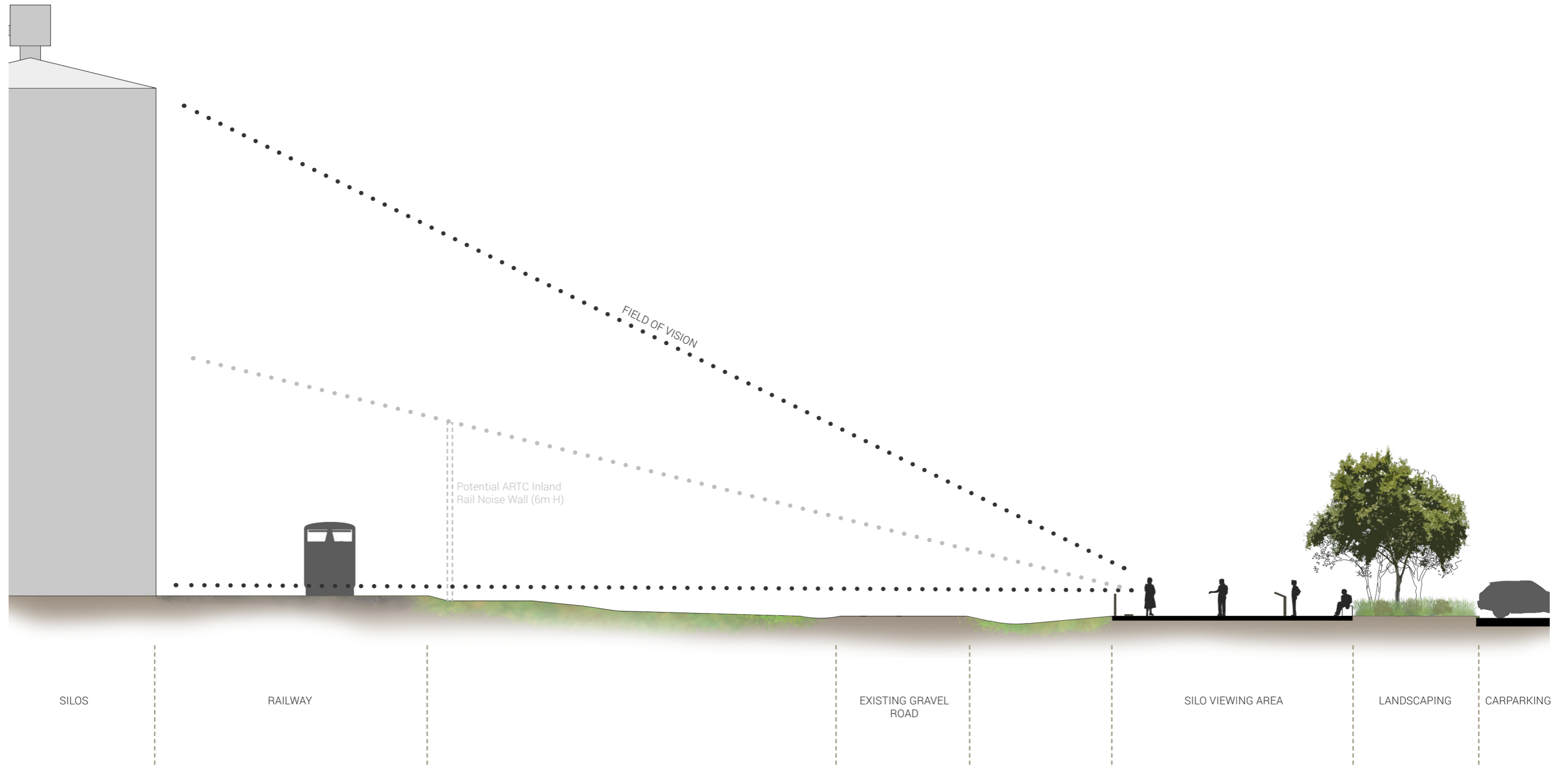
LEGEND

1	Grain silos with uplighting
2	Silos viewing area
3	Visitors carparking
4	PWD parking
5	Long vehicle parking (on gravel)
6	Coach setdown
7	Plain grey concrete pathway
8	Power lines placed underground out of the sight line
9	Sealed road (10m wide)
10	Native tree, shrubs and groundcovers planting
11	Existing cricket ground stands
12	Campground entrance threshold
13	8 x 6 m skillion roofed shelter with two picnic settings and BBQ
14	Amenities building (toilets) with lighting
15	Turfed RV / campertrailer sites
16	Compacted gravel RV / campertrailer sites
17	Ivory Curl planting along N-E boundary
18	Existing trees around cricket ground

Refer to engineer's drawings for site services overview.



4 Landscape Concept Section



0 2 4 6 8 10M/ 1:200@A3

5 Detail Landscape Concept Plan - Phase 1



LEGEND

1	Timber 3-railed fence 900 H with occasional laser-cut Corten panels, leaning rail and paint finish
2	Timber 3-railed fence 900 H with decorative laser-cut Corten panels and paint finish
3	Timber framed 'H' batten fence 900 H with paint finish
4	Corten folded interpretive signage
5	Streetbond pavement art
6	8 x 6 m skillion roofed shelter with two picnic settings
7	Off-form plain grey concrete seat
8	Exposed aggregate concrete pavement
9	Native tree, shrubs and groundcovers planting
10	PWD carparking
11	Carparking
12	Long vehicle parking (on gravel)
13	Coach setdown
14	Pedestrian zebra crossing
15	Plain grey concrete pathway
16	Culvert
17	Power lines placed underground out of the sight line

Refer to engineer's drawings for site services overview.



6 Detail Landscape Concept Plan - Phase 2

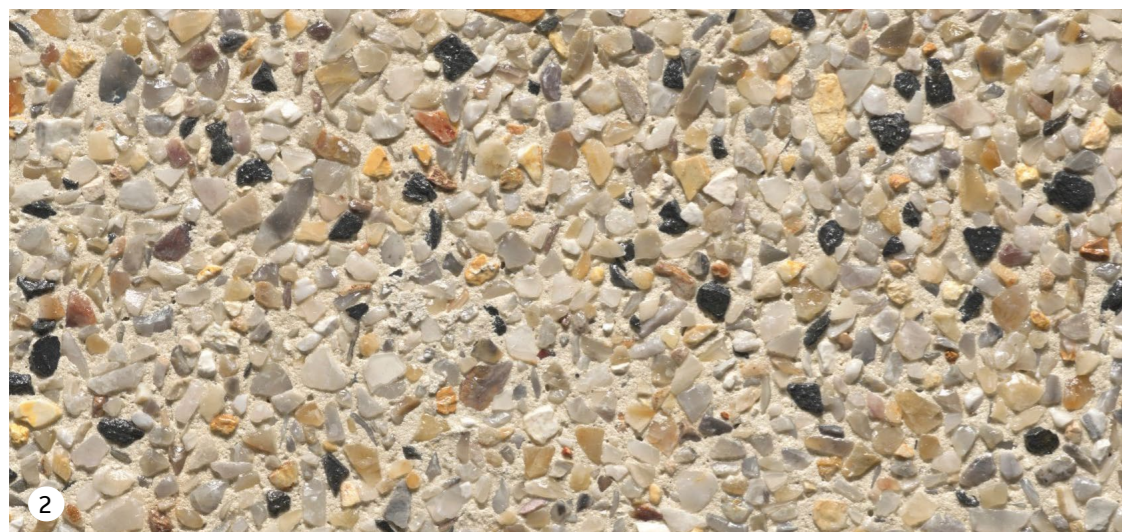
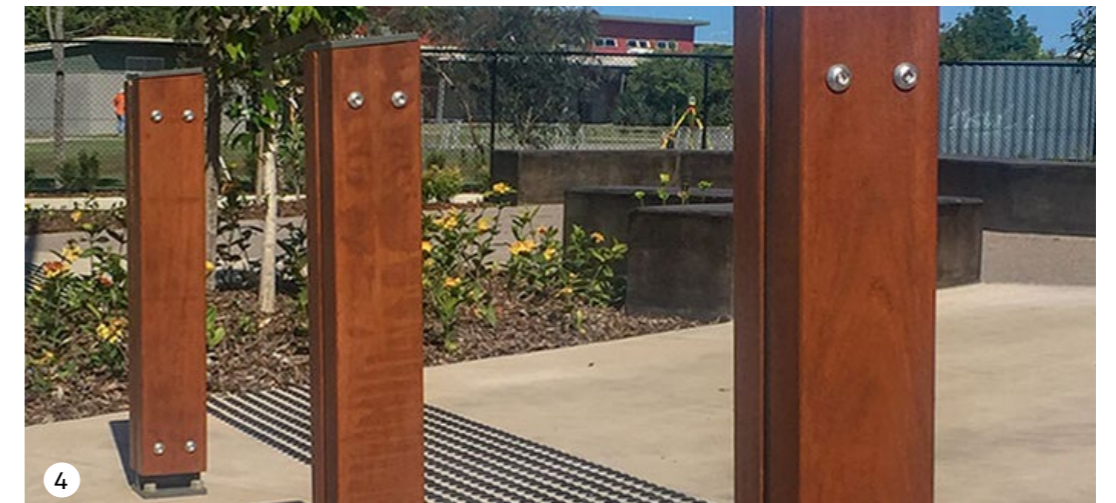


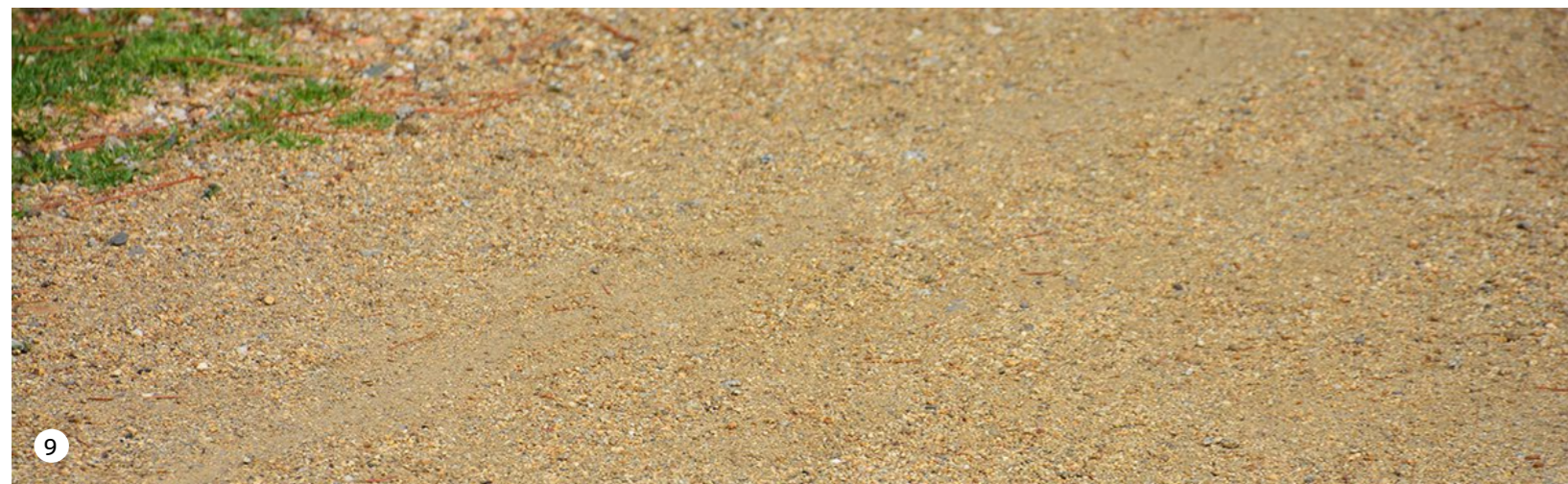
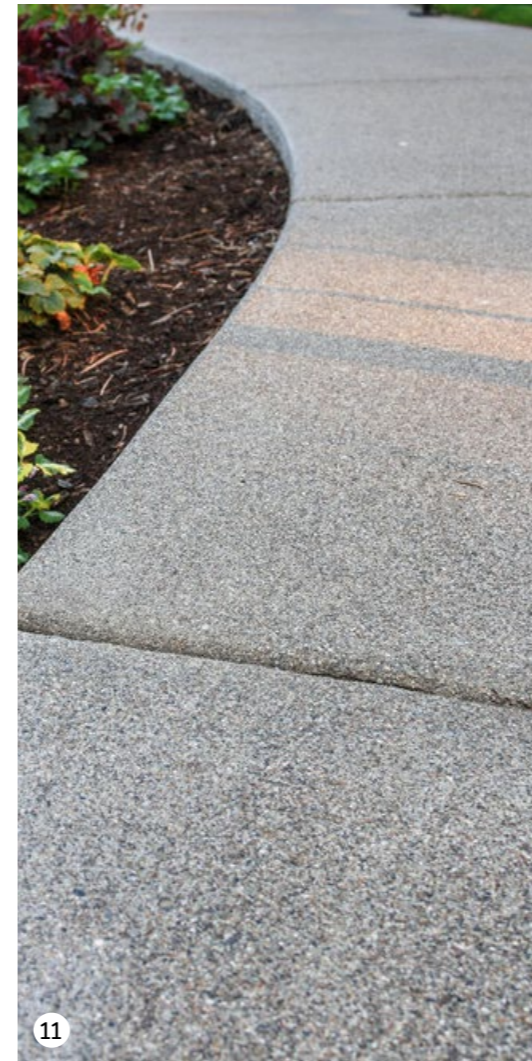
7 Material Palette

The character imagery illustrates the proposed look and feel of the design for the Forest Hill silos viewing area and campground.

LEGEND

- 1 Picnic Shelter - Landmark's Peninsula Series K305 6 X 8 M
- 2 Light-coloured exposed aggregate concrete
- 3 Laser-cut rust colour fence panels
- 4 600mm H timber-cladded bollards
- 5 Timber 3-railed fence 900 H with paint finish
- 6 StreetBond feature pavement





LEGEND

- 7 Precast concrete seat
- 8 Sealed asphalt road
- 9 Compacted gravel surface
- 10 Folded information panel
- 11 Broom-finish concrete pathway

8 Planting Palette

trees



ELAEOCARPUS reticulatus



LOPHOSTEMON confertus



MELALEUCA bracteata



BUCKINGHAMIA celsissima



FLINDERSIA australis

shrubs



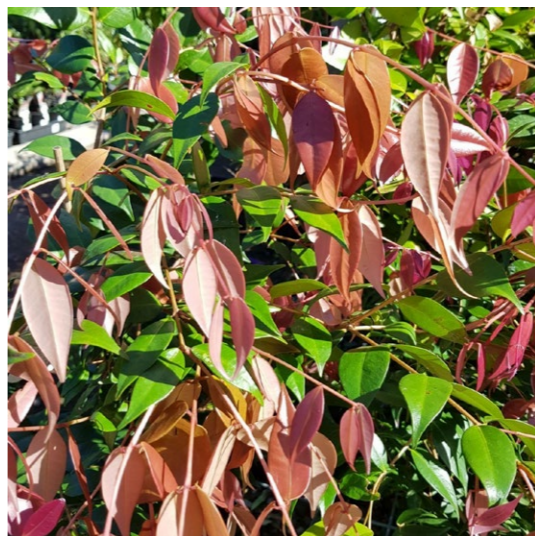
ACACIA baileyana purpurea



CALLISTEMON 'Rocky Rambler'



ACACIA amblygona



SYZYGIUM 'Cascade'



MELALEUCA thymifolia

groundcovers/grasses



FICINIA nodosa



MYOPORUM parviflorum



GREVILLEA 'Little Thicket'



EREMOPHILA 'Blue Horizon'



LOMANDRA hystrix

INDICATIVE PLANTING SCHEDULE

Botanical Name	Common Name
TREES	
<i>ACACIA harpophylla</i>	Brigalow
<i>BUCKINGHAMIA celsissima</i>	Ivory Curl
<i>BURSARIA incana</i>	Prickly Pine
<i>CORYMBIA curtisii</i>	Plunkett Mallee
<i>ELAEOCARPUS reticulatus</i>	Blueberry Ash
<i>EREMOPHILA longifolia</i>	Emu Bush
<i>FLINDERSIA australis</i>	Crow's Ash
<i>FLINDERSIA schottiana</i>	Bumpy Ash
<i>GREVILLEA banksii</i>	Red silky oak
<i>LEPTOSPERMUM petersonii</i>	Lemon-scented Teatree
<i>LOPHOSTEMON confertus</i>	Brush Box
<i>MELALEUCA bracteata</i>	Black Tea-tree
<i>MELALEUCA quinquenervia</i>	Tea-tree
<i>MELALEUCA saligna</i>	Willow Bottlebrush
<i>SYZYGIVM australe</i>	Creek Lilly-Pilly
<i>SYZYGIVM 'Cascade'</i>	Lilly-Pilly
SHRUBS	
<i>ACACIA amblygona</i>	Fan Wattle
<i>ACACIA baileyana purpurea</i>	Cootamundra Wattle
<i>ACACIA complanata</i>	Long-pod Wattle
<i>ACACIA suaveolens</i>	Sweet-scented Wattle
<i>CALLISTEMON 'Rocky Rambler'</i>	Rocky Rambler
<i>GREVILLEA 'Coconut Ice'</i>	Coconut Ice
<i>GREVILLEA 'Pink Surprise'</i>	Pink Surprise
<i>LEPTOSPERMUM 'Pink Cascade'</i>	Pink Cascade
<i>MELALEUCA thymifolia</i>	Thyme Honey-myrtle
<i>SYZYGIVM 'Tiny Trev'</i>	Tiny Trev
GROUNDCOVERS / GRASSES	
<i>CAREX appressa</i>	Tall Sedge
<i>CAREX gaudichaudiana</i>	Fen Sedge
<i>DIANELLA caerulea</i>	Blue Flax-lily
<i>EREMOPHILA 'Blue Horizon'</i>	Blue Horizon
<i>FICINIA nodosa</i>	Club Rush
<i>GREVILLEA 'Little Thicket'</i>	Little Thicket
<i>LOMANDRA hystrix</i>	Lomandra
<i>MYOPORUM parviflorum</i>	Creeping Boobialla
<i>SCAEVOLA aemula</i>	Fan Flower

place
design
group.

Australia
China
South East Asia

Follow us on



placedesigngroup.com